

PAA591Mi01

Polyclonal Antibody to Proliferating Cell Nuclear Antigen (PCNA)

Organism Species: *Homo sapiens* (Human), *Mus musculus* (Mouse), *Rattus norvegicus* (Rat), *Oryctolagus cuniculus* (Rabbit), *Rhesus monkey* (Simian), *Canis familiaris*; Canine (Dog), *Sus scrofa*; Porcine (Pig)

Instruction manual

FOR RESEARCH USE ONLY

NOT FOR USE IN CLINICAL DIAGNOSTIC PROCEDURES

13th Edition (Revised in Aug, 2023)

[PROPERTIES]

Source: Polyclonal antibody preparation

Host: Rabbit

Purification: Antigen-specific affinity chromatography followed by Protein A affinity chromatography

Traits: Liquid

Concentration: 0.34mg/mL

UOM: 20µL

Cross

Reactivity: Human;Mouse;Rat;Cavia;Canine;Porcine;Bovine;Caprine;Ovine;Equine;Gallus

Applications: WB; IHC

[IMMUNOGEN]

Immunogen: Recombinant PCNA (Leu6~Ser261) expressed in *E.coli*

Accession No.: RPA591Mi01

[APPLICATIONS]

Western blotting: 0.01-3µg/mL;

Immunohistochemistry: 5-30µg/mL;

Optimal working dilutions must be determined by end user.

[FORMULATION]

Form & Buffer: Supplied as solution form in 0.01M PBS, pH7.4, containing 0.05% Proclin-300, 50% glycerol.

[STORAGE AND STABILITY]

Storage: Avoid repeated freeze/thaw cycles.

Store at 4°C for frequent use.

Aliquot and store at -20°C for 24 months.

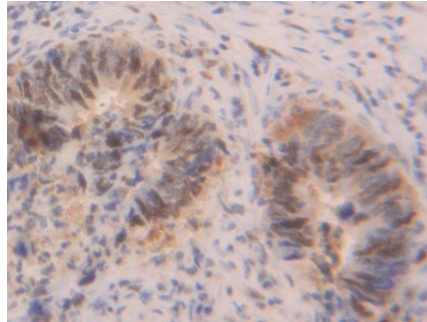
Stability Test: The thermal stability is described by the loss rate. The loss rate was determined by accelerated thermal degradation test, that is, incubate the protein at 37°C for 48h, and no

obvious degradation and precipitation were observed. The loss rate is less than 5% within the expiration date under appropriate storage condition.

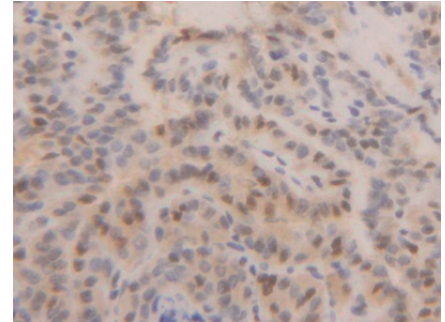
[IDENTIFICATION]



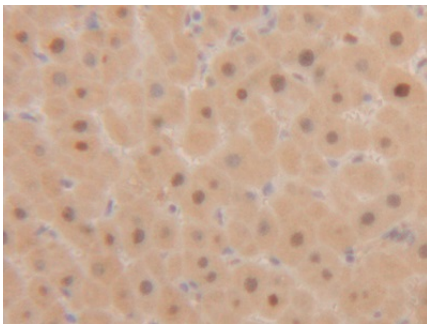
Western Blot; Samples: Lane1: Bovine Testis lysate; Lane2: Ovine Testis lysate; Primary Ab: 0.1µg/ml Rabbit Anti-Multi-species PCNA Antibody Second Ab: 0.2µg/ml HRP-Linked Caprine Anti-Rabbit IgG Polyclonal Antibody (Catalog: SAA544Rb19)



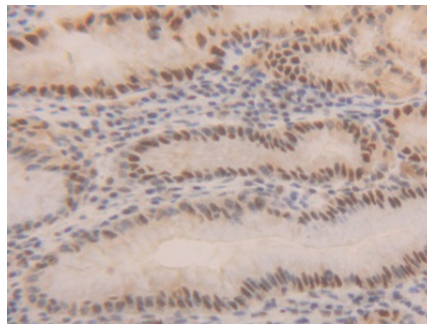
DAB staining on IHC-P; Samples: Human Colorectal cancer Tissue; Primary Ab: 20µg/ml Rabbit Anti-Multi-species PCNA Antibody Second Ab: 2µg/mL HRP-Linked Caprine Anti-Rabbit IgG Polyclonal Antibody (Catalog: SAA544Rb19)



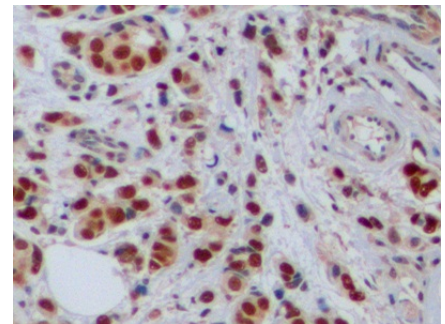
DAB staining on IHC-P; Samples: Human Thyroid cancer Tissue; Primary Ab: 20µg/ml Rabbit Anti-Human PCNA Antibody Second Ab: 2µg/mL HRP-Linked Caprine Anti-Rabbit IgG Polyclonal Antibody (Catalog: SAA544Rb19)



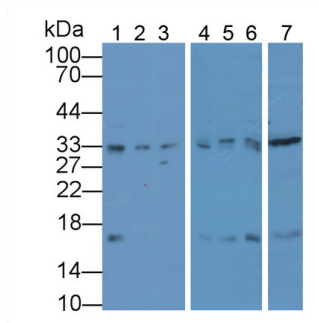
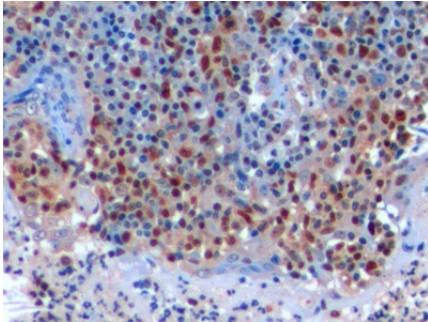
DAB staining on IHC-P; Samples: Human Liver Tissue; Primary Ab: 20µg/ml Rabbit Anti-Human PCNA Antibody Second Ab: 2µg/mL HRP-Linked Caprine Anti-Rabbit IgG Polyclonal Antibody (Catalog: SAA544Rb19)



DAB staining on IHC-P; Samples: Human Stomach Tissue; Primary Ab: 20µg/ml Rabbit Anti-Human PCNA Antibody Second Ab: 2µg/mL HRP-Linked Caprine Anti-Rabbit IgG Polyclonal Antibody (Catalog: SAA544Rb19)



DAB staining on IHC-P; Samples: Human Mammary gland Tissue; Primary Ab: 10µg/ml Rabbit Anti-Human PCNA Antibody Second Ab: 2µg/mL HRP-Linked Caprine Anti-Rabbit IgG Polyclonal Antibody



DAB staining on IHC-P;
Samples: Human Tonsil Tissue;
Primary Ab: 10µg/ml Rabbit Anti-Human PCNA Antibody
Second Ab: 2µg/mL HRP-Linked Caprine Anti-Rabbit IgG Polyclonal Antibody
(Catalog: SAA544Rb19)

Western Blot; Sample: Lane1: Porcine Liver lysate; Lane2: Porcine Cerebrum lysate; Lane3: Porcine Heart lysate; Lane4: Bovine Liver lysate; Lane5: Bovine Cerebrum lysate; Lane6: Bovine Heart lysate; Lane7: Caprine Cerebrum lysate
Primary Ab: 3µg/mL Rabbit Anti-Multi-species PCNA Ab
Second Ab: 0.2µg/mL HRP-Linked Caprine Anti-Rabbit IgG Polyclonal Antibody
(Catalog: SAA544Rb19)

[IMPORTANT NOTE]

The kit is designed for research use only, we will not be responsible for any issue if the kit was used in clinical diagnostic or any other procedures.