

PAA382Hu01

Polyclonal Antibody to Protein Kinase B Gamma (PKBg)

Organism Species: *Homo sapiens (Human)*

Instruction manual

FOR RESEARCH USE ONLY

NOT FOR USE IN CLINICAL DIAGNOSTIC PROCEDURES

13th Edition (Revised in Aug, 2023)

[PROPERTIES]

Source: Polyclonal antibody preparation

Host: Rabbit

Purification: Antigen-specific affinity chromatography followed by Protein A affinity chromatography

Traits: Liquid

Concentration: 0.47mg/mL

UOM: 100µL

Cross Reactivity: Mouse;Rat;Porcine

Applications: WB; IHC

[IMMUNOGEN]

Immunogen: Recombinant PKBg (Asp46~Glu338) expressed in *E.coli*

Accession No.: RPA382Hu01

[APPLICATIONS]

Western blotting: 0.01-2µg/mL;

Immunohistochemistry: 5-20µg/mL;

Optimal working dilutions must be determined by end user.

[FORMULATION]

Form & Buffer: Supplied as solution form in PBS, pH7.4, containing 0.02% NaN₃, 50% glycerol.

[STORAGE AND STABILITY]

Storage: Avoid repeated freeze/thaw cycles.

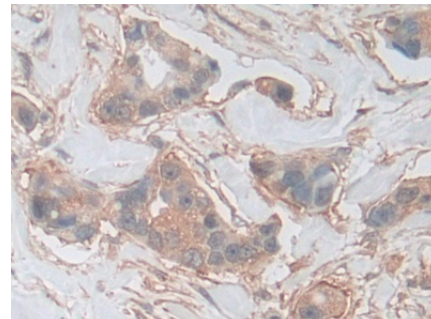
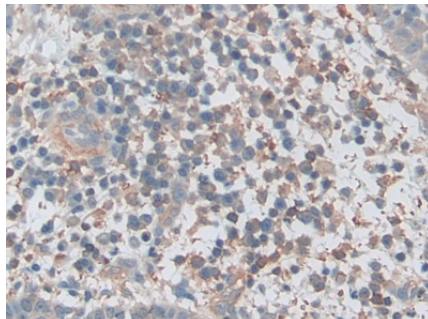
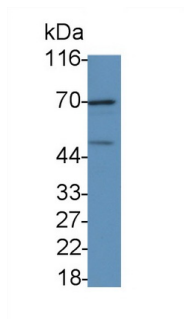
Store at 4°C for frequent use.

Aliquot and store at -20°C for 24 months.

Stability Test: The thermal stability is described by the loss rate. The loss rate was determined by accelerated thermal degradation test, that is, incubate the protein at 37°C for 48h, and no obvious degradation and precipitation were observed. The loss rate is less than 5% within the

expiration date under appropriate storage condition.

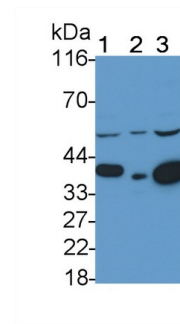
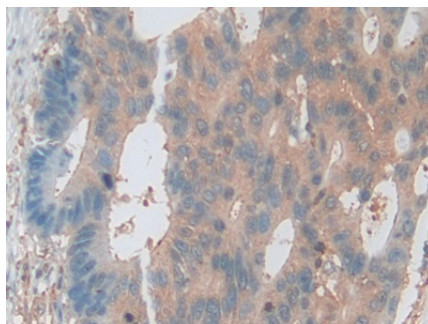
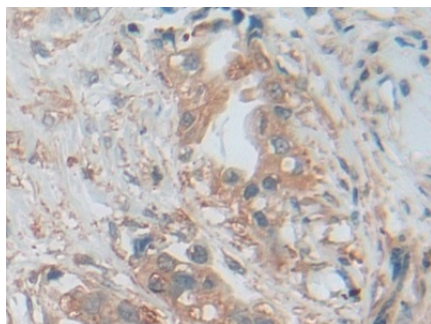
[IDENTIFICATION]



Western Blot; Sample: MCF7 cell lysate
Primary Ab: 1?g/ml Rabbit Anti-Human
PKBg Antibody Second Ab: 0.2μg/mL
HRP-Linked Caprine Anti-Rabbit IgG
Polyclonal Antibody (Catalog:
SAA544Rb19)

DAB staining on IHC-P; Samples:
Human Skin cancer Tissue; Primary
Ab: 10μg/ml Rabbit Anti-Human PKBg
Antibody Second Ab: 2μg/mL HRP-
Linked Caprine Anti-Rabbit IgG
Polyclonal Antibody (Catalog:
SAA544Rb19)

DAB staining on IHC-P;
Samples: Human Breast cancer Tissue;
Primary Ab: 10μg/ml Rabbit Anti-
Human PKBg Antibody
Second Ab: 2μg/mL HRP-Linked
Caprine Anti-Rabbit IgG Polyclonal
Antibody
(Catalog: SAA544Rb19)



DAB staining on IHC-P;
Samples: Human Pancreatic cancer
Tissue;
Primary Ab: 10μg/ml Rabbit Anti-
Human PKBg Antibody
Second Ab: 2μg/mL HRP-Linked
Caprine Anti-Rabbit IgG Polyclonal
Antibody
(Catalog: SAA544Rb19)

DAB staining on IHC-P;
Samples: Human Colorectal cancer
Tissue;
Primary Ab: 10μg/ml Rabbit Anti-
Human PKBg Antibody
Second Ab: 2μg/mL HRP-Linked
Caprine Anti-Rabbit IgG Polyclonal
Antibody
(Catalog: SAA544Rb19)

Western Blot; Sample: Lane1: Porcine
Cerebrum lysate; Lane2: Rat Cerebrum
lysate; Lane3: Mouse Cerebrum lysate
Primary Ab: 0.5μg/ml Rabbit Anti-
Human PKBg Antibody
Second Ab: 0.2μg/mL HRP-Linked
Caprine Anti-Rabbit IgG Polyclonal
Antibody
(Catalog: SAA544Rb19)

[IMPORTANT NOTE]

The kit is designed for research use only, we will not be responsible for any issue if the kit was used in clinical diagnostic or any other procedures.