

**PAA776Hu01**

**Polyclonal Antibody to Pyruvate dehydrogenase alpha 1 (PDHA1)**

**Organism Species: *Homo sapiens (Human)***

***Instruction manual***

FOR RESEARCH USE ONLY

NOT FOR USE IN CLINICAL DIAGNOSTIC PROCEDURES

---

13th Edition (Revised in Aug, 2023)

**[ PROPERTIES ]**

**Source:** Polyclonal antibody preparation

**Host:** Rabbit

**Purification:** Antigen-specific affinity chromatography followed by Protein A affinity chromatography

**Traits:** Liquid

**Concentration:** 0.5mg/mL

**UOM:** 100µL

**Cross Reactivity:** Mouse

**Applications:** WB; IHC; ICC/IF; FCM

**[ IMMUNOGEN ]**

**Immunogen:** Recombinant PDHA1 (Phe30~Ser390) expressed in *E.coli*

**Accession No.:** RPA776Hu01

**[ APPLICATIONS ]**

Western blotting: 0.01-2?g/mL

Immunohistochemistry: 5-30?g/mL

Immunofluorescence: 5-20µg/mL;

Flow cytometry: 20?g/mL;

Optimal working dilutions must be determined by end user.

**[ FORMULATION ]**

**Form & Buffer:** Supplied as solution form in PBS, pH7.4, containing 0.02% NaN<sub>3</sub>, 50% glycerol.

**[ STORAGE AND STABILITY ]**

**Storage:** Avoid repeated freeze/thaw cycles.

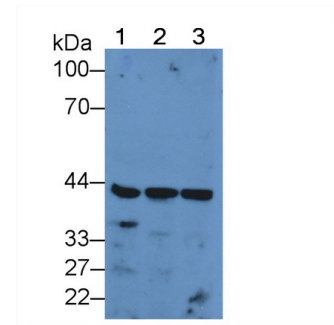
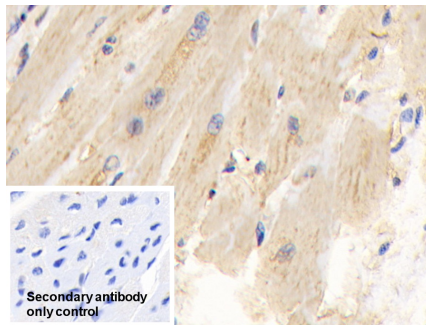
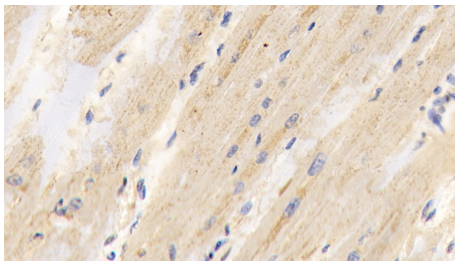
Store at 4°C for frequent use.

Aliquot and store at -20°C for 24 months.

**Stability Test:** The thermal stability is described by the loss rate. The loss rate was determined

by accelerated thermal degradation test, that is, incubate the protein at 37°C for 48h, and no obvious degradation and precipitation were observed. The loss rate is less than 5% within the expiration date under appropriate storage condition.

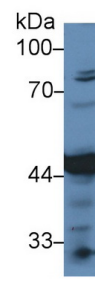
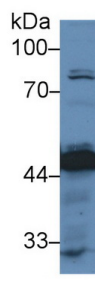
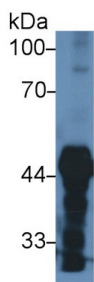
**[ IDENTIFICATION ]**



DAB staining on IHC-P; Samples: Human Cardiac Muscle Tissue; Primary Ab: 30µg/ml Rabbit Anti-Human PDHa Antibody Second Ab: 2µg/mL HRP-Linked Caprine Anti-Rabbit IgG Polyclonal Antibody (Catalog: SAA544Rb19)

DAB staining on IHC-P; Sample: Human Cardiac Muscle Tissue Primary Ab: 30µg/ml Rabbit Anti-Human PDHA1 Antibody Control: Used PBS instead of primary antibody Second Ab: 2µg/ml HRP-Linked Caprine Anti-Rabbit IgG Polyclonal Antibody (Catalog: SAA544Rb19)

Western Blot; Sample: Lane1: Human Liver lysate; Lane2: Human HeLa cell lysate; Lane3: Human ECV304 cell lysate; Primary Ab: 2µg/mL Rabbit Anti-Human PDHa Antibody Second Ab: 0.2µg/mL HRP-Linked Caprine Anti-Rabbit IgG Polyclonal Antibody (Catalog: SAA544Rb19)



Western Blot; Sample: Mouse Cerebrum lysate;

Western Blot; Sample: Human HepG2 cell lysate;

Western Blot; Sample: Human HeLa cell lysate;

Primary Ab: 1µg/ml Rabbit Anti-Human PDHa Antibody

Primary Ab: 1µg/ml Rabbit Anti-Human PDHa Antibody

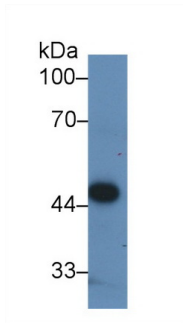
Primary Ab: 1µg/ml Rabbit Anti-Human PDHa Antibody

Second Ab: 0.2µg/mL HRP-Linked Caprine Anti-Rabbit IgG Polyclonal

Second Ab: 0.2µg/mL HRP-Linked Caprine Anti-Rabbit IgG Polyclonal

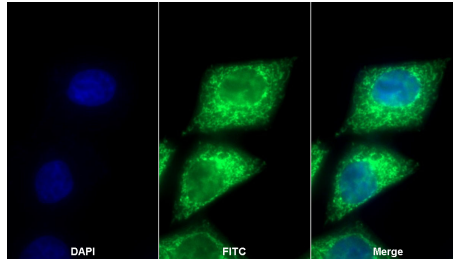
Second Ab: 0.2µg/mL HRP-Linked Caprine Anti-Rabbit IgG Polyclonal

Antibody  
(Catalog: SAA544Rb19)



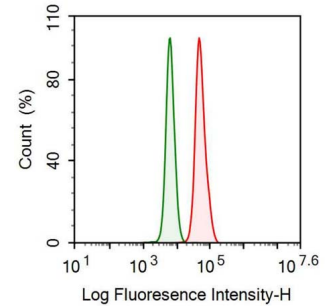
Western Blot; Sample: Human ECV304 cell lysate;  
 Primary Ab: 1µg/ml Rabbit Anti-Human PDHa Antibody  
 Second Ab: 0.2µg/mL HRP-Linked Caprine Anti-Rabbit IgG Polyclonal Antibody  
 (Catalog: SAA544Rb19)

Antibody  
(Catalog: SAA544Rb19)



FITC staining on IF;  
 Sample: HepG2 cell  
 Primary Ab: 20µg/ml Rabbit Anti-Human PDHA1 Antibody  
 Second Ab: 2µg/ml FITC-Linked Caprine Anti-Rabbit IgG Polyclonal Antibody  
 (Catalog: SAA544Rb11)

Antibody  
(Catalog: SAA544Rb19)



Human Hela cell was fixed with 2% paraformaldehyde (10 min) , permeabilised with 0.1% BSA-Triton X-100, then stained with 20µg/ml rabbit Anti-human PDHA1 Polyclonal Antibody (Catalog PAA776Hu01, red histogram) or Isotype control antibody (Catalog IS067-Rb01, green histogram), followed by 1µg/ml FITC-conjugated Anti-rabbit IgG Secondary Antibody (Catalog SAA544Rb18).

### [ **IMPORTANT NOTE** ]

The kit is designed for research use only, we will not be responsible for any issue if the kit was used in clinical diagnostic or any other procedures.