

**PAA588Ra01**

**Polyclonal Antibody to Pyruvate kinase isozymes M2 (PKM2)**

**Organism Species: *Rattus norvegicus* (Rat)**

***Instruction manual***

**FOR RESEARCH USE ONLY**

**NOT FOR USE IN CLINICAL DIAGNOSTIC PROCEDURES**

---

13th Edition (Revised in Aug, 2023)

## **[ PROPERTIES ]**

**Source:** Polyclonal antibody preparation

**Host:** Rabbit

**Purification:** Antigen-specific affinity chromatography followed by Protein A affinity chromatography

**Traits:** Liquid

**Concentration:** 0.5mg/mL

**UOM:** 20µL

**Cross Reactivity:** Human

**Applications:** WB; IHC; ICC/IF;FCM

## **[ IMMUNOGEN ]**

**Immunogen:** Recombinant PKM2 (Val324~Pro531 (Accession # P11980)) expressed in *E.coli*

**Accession No.:** RPA588Ra01

## **[ APPLICATIONS ]**

Western blotting: 0.01-2µg/mL;

Immunohistochemistry: 5-20µg/mL;

Immunocytochemistry: 5-20µg/mL;

For flow cytometry: 20µg/mL;

Optimal working dilutions must be determined by end user.

## **[ FORMULATION ]**

**Form & Buffer:** Supplied as solution form in PBS, pH7.4, containing 0.02% NaN<sub>3</sub>, 50% glycerol.

## **[ STORAGE AND STABILITY ]**

**Storage:** Avoid repeated freeze/thaw cycles.

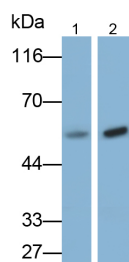
Store at 4°C for frequent use.

Aliquot and store at -20°C for 24 months.

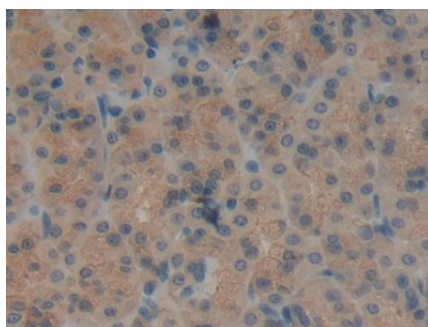
**Stability Test:** The thermal stability is described by the loss rate. The loss rate was determined

by accelerated thermal degradation test, that is, incubate the protein at 37°C for 48h, and no obvious degradation and precipitation were observed. The loss rate is less than 5% within the expiration date under appropriate storage condition.

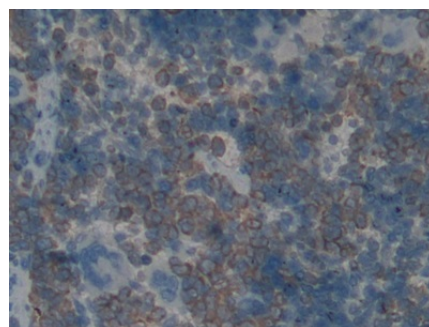
## [ IDENTIFICATION ]



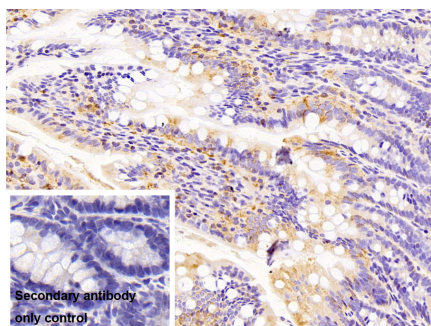
Western Blot; Samples: Lane1: Rat Cerebrum lysate; Lane2: Hela cell lysate; Primary Ab: 0.1µg/ml Rabbit Anti-Rat PKM2 Antibody Second Ab: 0.2?g/ml HRP-Linked Caprine Anti-Rabbit IgG Polyclonal Antibody (Catalog: SAA544Rb19)



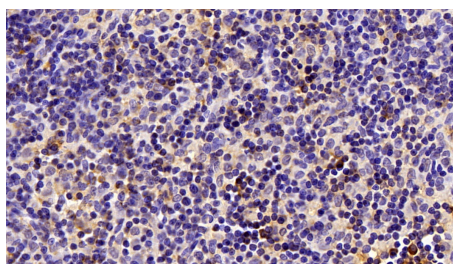
DAB staining on IHC-P; Samples: Rat Stomach Tissue; Primary Ab: 10µg/ml Rabbit Anti-Rat PKM2 Antibody Second Ab: 2µg/mL HRP-Linked Caprine Anti-Rabbit IgG Polyclonal Antibody (Catalog: SAA544Rb19)



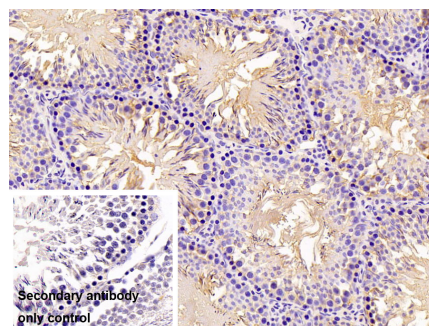
DAB staining on IHC-P; Samples: Rat Spleen Tissue; Primary Ab: 10µg/ml Rabbit Anti-Rat PKM2 Antibody Second Ab: 2µg/mL HRP-Linked Caprine Anti-Rabbit IgG Polyclonal Antibody (Catalog: SAA544Rb19)



DAB staining on IHC-P; Sample: Rat Colon Tissue Primary Ab: 10µg/ml Rabbit Anti-Rat PKM2 Antibody Control: Used PBS instead of primary antibody Second Ab: 2?g/ml HRP-Linked Caprine Anti-Rabbit IgG Polyclonal



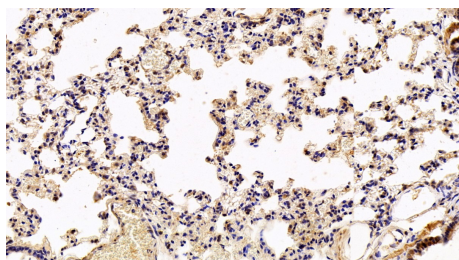
DAB staining on IHC-P; Sample: Rat Lymph node Tissue; Primary Ab: 10ug/ml Rabbit Anti-Rat PKM2 Antibody Second Ab: 2µg/mL HRP-Linked Caprine Anti-Rabbit IgG Polyclonal Antibody (Catalog: SAA544Rb19)



DAB staining on IHC-P; Sample: Rat Testis Tissue Primary Ab: 10µg/ml Rabbit Anti-Rat PKM2 Antibody Control: Used PBS instead of primary antibody Second Ab: 2?g/ml HRP-Linked Caprine Anti-Rabbit IgG Polyclonal

### Antibody

(Catalog: SAA544Rb19)



DAB staining on IHC-P;

Sample: Rat Lung Tissue;

Primary Ab: 10ug/ml Rabbit Anti-Rat

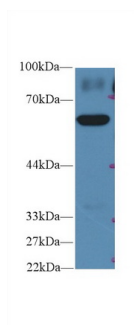
PKM2 Antibody

Second Ab: 2µg/mL HRP-Linked

Caprine Anti-Rabbit IgG Polyclonal

Antibody

(Catalog: SAA544Rb19)



Western Blot; Sample: Human HepG2  
cell lysate;

Primary Ab: 2µg/ml Rabbit Anti-Rat

PKM2 Antibody

Second Ab: 0.2µg/mL HRP-Linked

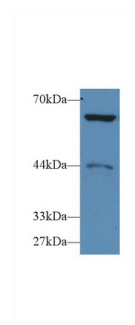
Caprine Anti-Rabbit IgG Polyclonal

Antibody

(Catalog: SAA544Rb19)

### Antibody

(Catalog: SAA544Rb19)



Western Blot; Sample: Human MCF7  
cell lysate;

Primary Ab: 2µg/ml Rabbit Anti-Rat

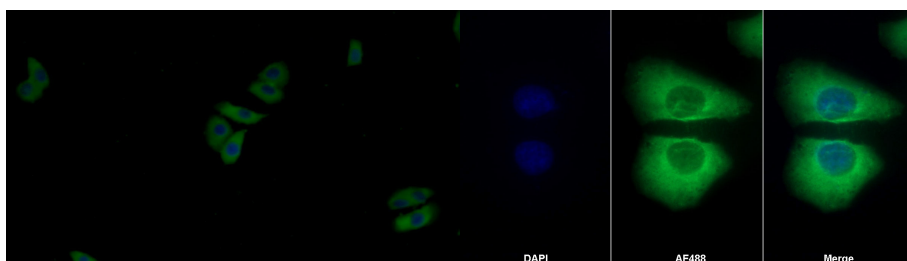
PKM2 Antibody

Second Ab: 0.2µg/mL HRP-Linked

Caprine Anti-Rabbit IgG Polyclonal

Antibody

(Catalog: SAA544Rb19)



FITC staining on IF;

Samples: Human MCF7 cell;

Primary Ab: 20µg/ml Rabbit Anti-Rat

PKM2 Antibody

Second Ab: 1µg/ml FITC-Linked

Caprine Anti-Rabbit IgG Polyclonal

Antibody

(Catalog: SAA544Rb18)

AF488 staining on IF;

Sample: Hela cell

Primary Ab: 20µg/ml Rabbit Anti-Rat

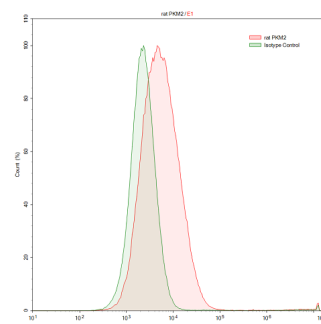
PKM2 Antibody

Second Ab: 2µg/ml AF488-Linked

Caprine Anti-Rabbit IgG Polyclonal

Antibody

(Catalog: SAA544Rb11)



HepG2 human hepatocellular carcinoma cell line was stained with rabbit Anti-rat PKM2 Polyclonal Antibody (Catalog # PAA588Ra01, filled red histogram) or Isotype control antibody (Catalog # IS067-Rb01, filled green histogram), followed by APC-conjugated Anti-rabbit IgG Secondary Antibody (Catalog # SAA544Rb15).

Cells were fixed with 4% paraformaldehyde and permeabilized

with 0.1% Triton X-100.

**[ IMPORTANT NOTE ]**

The kit is designed for research use only, we will not be responsible for any issue if the kit was used in clinical diagnostic or any other procedures.