

PAA377Hu01

Polyclonal Antibody to Retinol Binding Protein 2, Cellular (RBP2)

Organism Species: *Homo sapiens (Human)*

Instruction manual

FOR RESEARCH USE ONLY

NOT FOR USE IN CLINICAL DIAGNOSTIC PROCEDURES

13th Edition (Revised in Aug, 2023)

[**PROPERTIES**]

Source: Polyclonal antibody preparation

Host: Rabbit

Purification: Antigen-specific affinity chromatography followed by Protein A affinity chromatography

Traits: Liquid

Concentration: 0.5mg/mL

UOM: 100µL

Cross Reactivity: Mouse;Rat;Porcine

Applications: WB; IHC; ICC/IF

[**IMMUNOGEN**]

Immunogen: Recombinant RBP2 (Met1-Lys134) expressed in *E.coli*

Accession No.: RPA377Hu01

[**APPLICATIONS**]

Western blotting: 0.01-2µg/mL;

Immunohistochemistry: 5-20µg/mL;

Immunofluorescence: 5-20µg/mL;

Optimal working dilutions must be determined by end user.

[**FORMULATION**]

Form & Buffer: Supplied as solution form in 0.01M PBS, pH7.4, containing 0.05% Proclin-300, 50% glycerol.

[**STORAGE AND STABILITY**]

Storage: Avoid repeated freeze/thaw cycles.

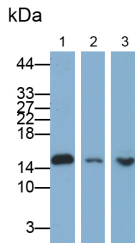
Store at 4°C for frequent use.

Aliquot and store at -20°C for 24 months.

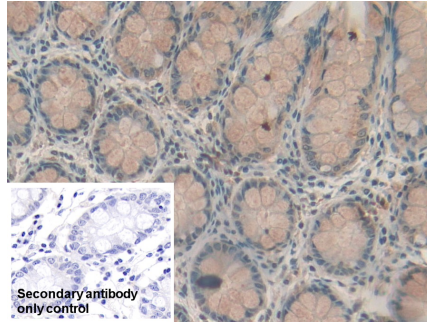
Stability Test: The thermal stability is described by the loss rate. The loss rate was determined by accelerated thermal degradation test, that is, incubate the protein at 37°C for 48h, and no

obvious degradation and precipitation were observed. The loss rate is less than 5% within the expiration date under appropriate storage condition.

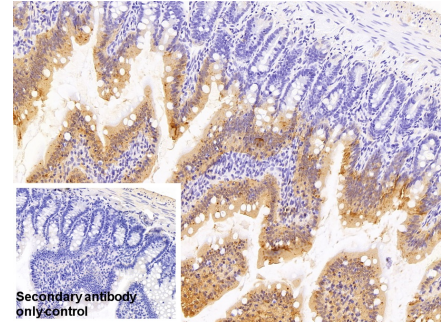
[IDENTIFICATION]



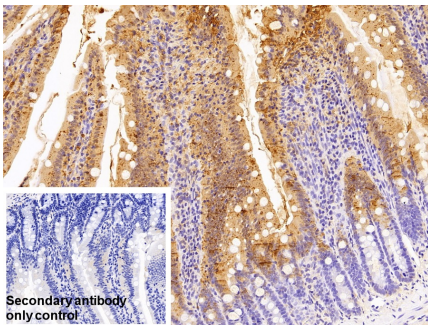
Western Blot; Samples: Lane1: Rat Colon lysate; Lane2: CaCo-2 cell lysate; Lane3: SW480 cell lysate; Primary Ab: 0.1µg/ml Rabbit Anti-Human RBP2 Antibody Second Ab: 0.2µg/ml HRP-Linked Caprine Anti-Rabbit IgG Polyclonal Antibody (Catalog: SAA544Rb19)



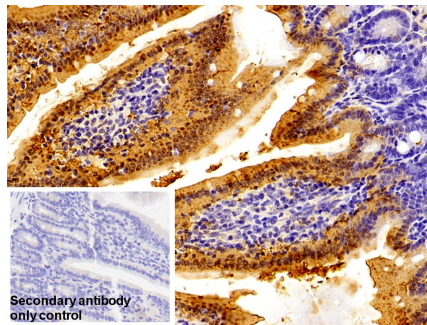
DAB staining on IHC-P; Sample: Human Colon Tissue Primary Ab: 20µg/ml Rabbit Anti-Human RBP2 Antibody Control: Used PBS instead of primary antibody Second Ab: 2µg/ml HRP-Linked Caprine Anti-Rabbit IgG Polyclonal Antibody (Catalog: SAA544Rb19)



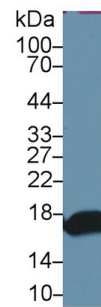
DAB staining on IHC-P; Sample: Rat Colon Tissue Primary Ab: 20µg/ml Rabbit Anti-Human RBP2 Antibody Control: Used PBS instead of primary antibody Second Ab: 2µg/ml HRP-Linked Caprine Anti-Rabbit IgG Polyclonal Antibody (Catalog: SAA544Rb19)



DAB staining on IHC-P; Sample: Rat Small intestine Tissue Primary Ab: 20µg/ml Rabbit Anti-Human RBP2 Antibody Control: Used PBS instead of primary antibody Second Ab: 2µg/ml HRP-Linked

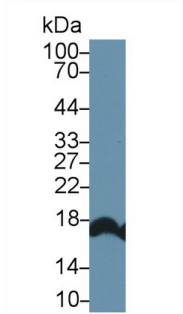


DAB staining on IHC-P; Sample: Mouse Small intestine Tissue Primary Ab: 20µg/ml Rabbit Anti-Human RBP2 Antibody Control: Used PBS instead of primary antibody Second Ab: 2µg/ml HRP-Linked



Western Blot; Sample: Mouse Small intestine lysate; Primary Ab: 1µg/ml Rabbit Anti-Human RBP2 Antibody Second Ab: 0.2µg/ml HRP-Linked Caprine Anti-Rabbit IgG Polyclonal Antibody

Caprine Anti-Rabbit IgG Polyclonal
Antibody
(Catalog: SAA544Rb19)



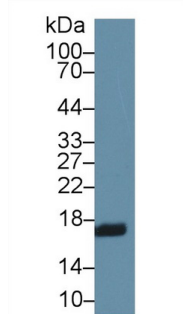
Western Blot; Sample: Rat Small
intestine lysate;

Primary Ab: 2µg/ml Rabbit Anti-Human
RBP2 Antibody

Second Ab: 0.2µg/mL HRP-Linked
Caprine Anti-Rabbit IgG Polyclonal
Antibody

(Catalog: SAA544Rb19) Selected

Caprine Anti-Rabbit IgG Polyclonal
Antibody
(Catalog: SAA544Rb19)



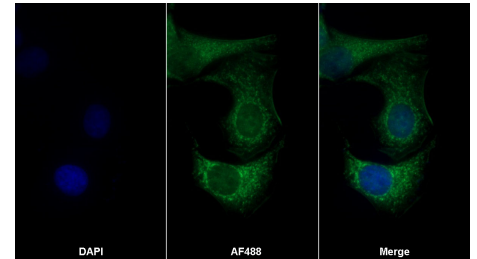
Western Blot; Sample: Porcine Small
intestine lysate;

Primary Ab: 2µg/ml Rabbit Anti-Human
RBP2 Antibody

Second Ab: 0.2µg/mL HRP-Linked
Caprine Anti-Rabbit IgG Polyclonal
Antibody

(Catalog: SAA544Rb19) Selected

(Catalog: SAA544Rb19) Selected



AF488 staining on IF;

Sample: HeLa cell

Primary Ab: 20µg/ml Rabbit Anti-
Human RBP2 Antibody

Second Ab: 2µg/ml AF488-Linked
Caprine Anti-Rabbit IgG Polyclonal
Antibody

(Catalog: SAA544Rb11)

[**IMPORTANT NOTE**]

The kit is designed for research use only, we will not be responsible for any issue if the kit was used in clinical diagnostic or any other procedures.