

PAH179Hu01

Polyclonal Antibody to Stratifin (SFN)

Organism Species: *Homo sapiens (Human)*

Instruction manual

FOR RESEARCH USE ONLY

NOT FOR USE IN CLINICAL DIAGNOSTIC PROCEDURES

13th Edition (Revised in Aug, 2023)

[PROPERTIES]

Source: Polyclonal antibody preparation

Host: Rabbit

Purification: Antigen-specific affinity chromatography followed by Protein A affinity chromatography

Traits: Liquid

Concentration: 0.5mg/mL

UOM: 100 μ L

Cross Reactivity: Mouse;Rat;Porcine

Applications: WB; ICC/IF

[IMMUNOGEN]

Immunogen: Recombinant SFN (Met1~Ser248) expressed in *E.coli*

Accession No.: RPH179Hu01

[APPLICATIONS]

Western blotting: 0.01-2 μ g/mL;

Immunofluorescence: 5-20 μ g/mL;

Optimal working dilutions must be determined by end user.

[FORMULATION]

Form & Buffer: Supplied as solution form in 0.01M PBS, pH7.4, containing 0.05% Proclin-300, 50% glycerol.

[STORAGE AND STABILITY]

Storage: Avoid repeated freeze/thaw cycles.

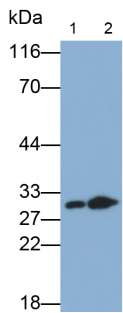
Store at 4°C for frequent use.

Aliquot and store at -20°C for 24 months.

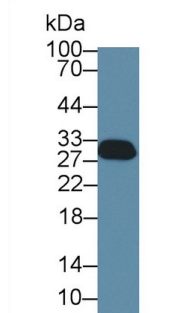
Stability Test: The thermal stability is described by the loss rate. The loss rate was determined by accelerated thermal degradation test, that is, incubate the protein at 37°C for 48h, and no obvious degradation and precipitation were observed. The loss rate is less than 5% within the

expiration date under appropriate storage condition.

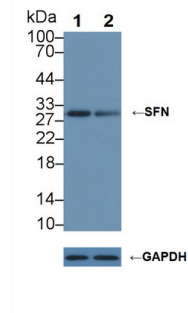
[IDENTIFICATION]



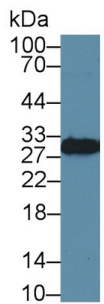
Western Blot; Samples: Lane1: MCF7 cell lysate; Lane2: HaCaT cell lysate;
 Primary Ab: 0.05µg/ml Rabbit Anti-Human SFN Antibody Second Ab: 0.2µg/ml HRP-Linked Caprine Anti-Rabbit IgG Polyclonal Antibody
 (Catalog: SAA544Rb19)



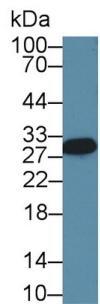
Western Blot; Sample: Rat Cerebrum lysate;
 Primary Ab: 1µg/ml Rabbit Anti-Human SFN Antibody
 Second Ab: 0.2µg/mL HRP-Linked Caprine Anti-Rabbit IgG Polyclonal Antibody
 (Catalog: SAA544Rb19)



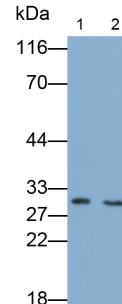
Knockout Varification:
 Lane 1: Wild-type HeLa cell lysate;
 Lane 2: SFN knockout HeLa cell lysate;
 Predicted MW: 28kd
 Observed MW: 30kd
 Primary Ab: 1µg/ml Rabbit Anti-Human SFN Antibody
 Second Ab: 0.2µg/mL HRP-Linked Caprine Anti-Rabbit IgG Polyclonal Antibody
 (Catalog: SAA544Rb19)



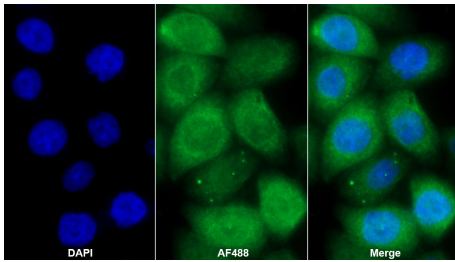
Western Blot; Sample: Human A431 cell lysate;
 Primary Ab: 1µg/ml Rabbit Anti-Human SFN Antibody
 Second Ab: 0.2µg/mL HRP-Linked Caprine Anti-Rabbit IgG Polyclonal Antibody
 (Catalog: SAA544Rb19)



Western Blot; Sample: Human HeLa cell lysate;
 Primary Ab: 1µg/ml Rabbit Anti-Human SFN Antibody
 Second Ab: 0.2µg/mL HRP-Linked Caprine Anti-Rabbit IgG Polyclonal Antibody
 (Catalog: SAA544Rb19)



Western Blot; Samples: Lane1: Mouse Cerebrum lysate; Lane2: Porcine Cerebrum lysate;
 Primary Ab: 0.05µg/ml Rabbit Anti-Human SFN Antibody
 Second Ab: 0.2µg/ml HRP-Linked Caprine Anti-Rabbit IgG Polyclonal Antibody



AF488 staining on IF;

Sample: MCF7 cell

Primary Ab: 20 μ g/ml Rabbit Anti-
Human SFN Antibody

Second Ab: 2 μ g/ml AF488-Linked
Caprine Anti-Rabbit IgG Polyclonal
Antibody

(Catalog: SAA544Rb11)

[**IMPORTANT NOTE**]

The kit is designed for research use only, we will not be responsible for any issue if the kit was used in clinical diagnostic or any other procedures.