

**PAD173Hu01**

**Polyclonal Antibody to Stromal Cell Derived Factor 2 Like Protein 1 (SDF2L1)**

**Organism Species: *Homo sapiens (Human)***

***Instruction manual***

FOR RESEARCH USE ONLY

NOT FOR USE IN CLINICAL DIAGNOSTIC PROCEDURES

---

13th Edition (Revised in Aug, 2023)

**[ PROPERTIES ]**

**Source:** Polyclonal antibody preparation

**Host:** Rabbit

**Purification:** Antigen-specific affinity chromatography followed by Protein A affinity chromatography

**Traits:** Liquid

**Concentration:** 0.5mg/mL

**UOM:** 100µL

**Cross Reactivity:** Mouse

**Applications:** WB; IHC

**[ IMMUNOGEN ]**

**Immunogen:** Recombinant SDF2L1 (Ala29~Glu213) expressed in *E.coli*

**Accession No.:** RPD173Hu01

**[ APPLICATIONS ]**

Western blotting: 0.01-2µg/mL;

Immunohistochemistry: 5-20µg/mL;

Optimal working dilutions must be determined by end user.

**[ FORMULATION ]**

**Form & Buffer:** Supplied as solution form in 0.01M PBS, pH7.4, containing 0.05% Proclin-300, 50% glycerol.

**[ STORAGE AND STABILITY ]**

**Storage:** Avoid repeated freeze/thaw cycles.

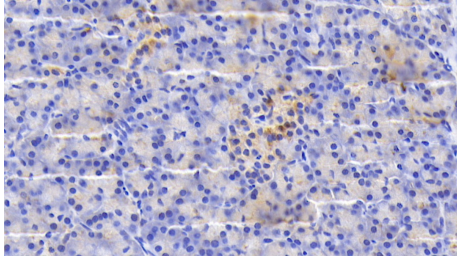
Store at 4°C for frequent use.

Aliquot and store at -20°C for 24 months.

**Stability Test:** The thermal stability is described by the loss rate. The loss rate was determined by accelerated thermal degradation test, that is, incubate the protein at 37°C for 48h, and no obvious degradation and precipitation were observed. The loss rate is less than 5% within the

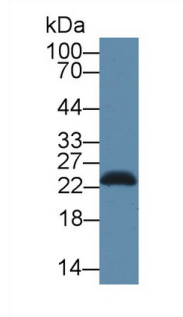
expiration date under appropriate storage condition.

**[ IDENTIFICATION ]**

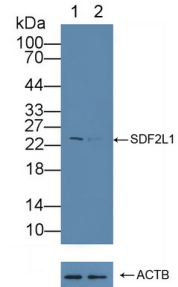


DAB staining on IHC-P; Samples:

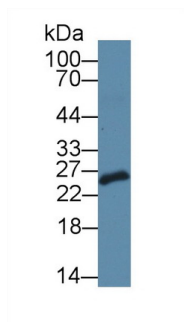
Human Pancreas Tissue; Primary Ab:  
20µg/ml Rabbit Anti-Human SDF2L1  
Antibody Second Ab: 2µg/mL HRP-  
Linked Caprine Anti-Rabbit IgG  
Polyclonal Antibody (Catalog:  
SAA544Rb19)



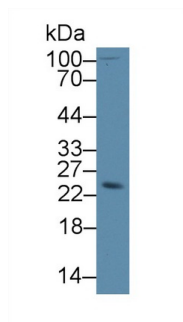
Western Blot; Sample: Mouse  
Pancreas lysate;  
Primary Ab: 1µg/ml Rabbit Anti-Human  
SDF2L1 Antibody  
Second Ab: 0.2µg/mL HRP-Linked  
Caprine Anti-Rabbit IgG Polyclonal  
Antibody  
(Catalog: SAA544Rb19)



Knockout Varification:  
Lane 1: Wild-type K562 cell lysate;  
Lane 2: SDF2L1 knockout K562 cell  
lysate;  
Predicted MW: 24kd  
Observed MW: 24kd  
Primary Ab: 1µg/ml Rabbit Anti-Human  
SDF2L1 Antibody  
Second Ab: 0.2µg/mL HRP-Linked  
Caprine Anti-Rabbit IgG Polyclonal  
Antibody  
(Catalog: SAA544Rb19)



Western Blot; Sample: Mouse Testis  
lysate;  
Primary Ab: 1µg/ml Rabbit Anti-Human  
SDF2L1 Antibody  
Second Ab: 0.2µg/mL HRP-Linked  
Caprine Anti-Rabbit IgG Polyclonal  
Antibody



Western Blot; Sample: Human K562  
cell lysate;  
Primary Ab: 1µg/ml Rabbit Anti-Human  
SDF2L1 Antibody  
Second Ab: 0.2µg/mL HRP-Linked  
Caprine Anti-Rabbit IgG Polyclonal  
Antibody

(Catalog: SAA544Rb19)

(Catalog: SAA544Rb19)

**[ IMPORTANT NOTE ]**

The kit is designed for research use only, we will not be responsible for any issue if the kit was used in clinical diagnostic or any other procedures.