

PAC824Hu01

Polyclonal Antibody to Thymopoietin (TMPO)

Organism Species: *Homo sapiens (Human)*

Instruction manual

FOR RESEARCH USE ONLY

NOT FOR USE IN CLINICAL DIAGNOSTIC PROCEDURES

13th Edition (Revised in Aug, 2023)

[PROPERTIES]

Source: Polyclonal antibody preparation

Host: Rabbit

Purification: Antigen-specific affinity chromatography followed by Protein A affinity chromatography

Traits: Liquid

Concentration: 0.39mg/mL

UOM: 50µL

Cross Reactivity: Mouse

Applications: WB; IHC; ICC/IF; FCM

[IMMUNOGEN]

Immunogen: Recombinant TMPO (Met1~Leu243) expressed in *E.coli*

Accession No.: RPC824Hu01

[APPLICATIONS]

Western blotting: 0.01-2µg/mL;

Immunohistochemistry: 5-20µg/mL;

Immunofluorescence: 5-20µg/mL;

Flow cytometry: 20µg/mL;

Optimal working dilutions must be determined by end user.

[FORMULATION]

Form & Buffer: Supplied as solution form in PBS, pH7.4, containing 0.02% NaN₃, 50% glycerol.

[STORAGE AND STABILITY]

Storage: Avoid repeated freeze/thaw cycles.

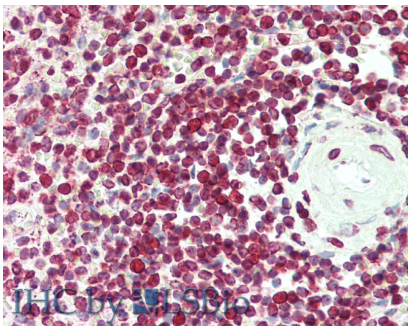
Store at 4°C for frequent use.

Aliquot and store at -20°C for 24 months.

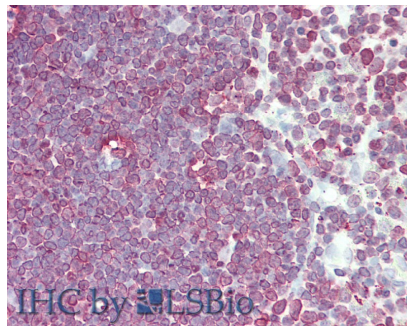
Stability Test: The thermal stability is described by the loss rate. The loss rate was determined

by accelerated thermal degradation test, that is, incubate the protein at 37°C for 48h, and no obvious degradation and precipitation were observed. The loss rate is less than 5% within the expiration date under appropriate storage condition.

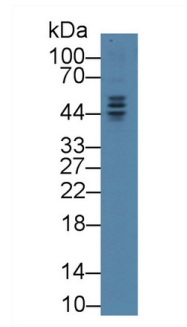
[IDENTIFICATION]



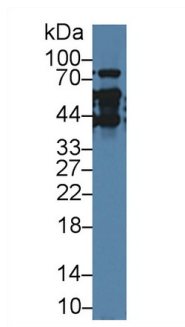
Vector Red staining on IHC-P;
 Samples: Human Spleen Tissue;
 Primary Ab: 10µg/ml Rabbit Anti-Human TMPO Antibody Second Ab: 2µg/mL HRP-Linked Caprine Anti-Rabbit IgG Polyclonal Antibody



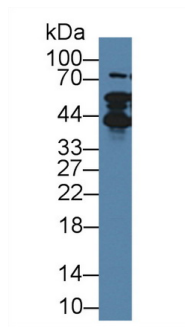
Vector Red staining on IHC-P;
 Samples: Human Thymus Tissue;
 Primary Ab: 10µg/ml Rabbit Anti-Human TMPO Antibody
 Second Ab: 2µg/mL HRP-Linked Caprine Anti-Rabbit IgG Polyclonal Antibody



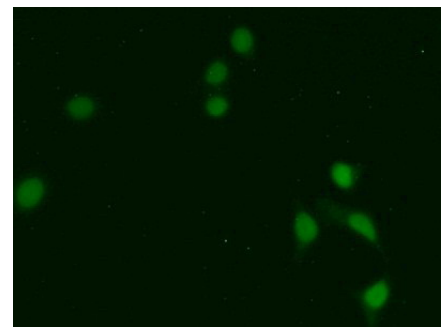
Western Blot; Sample: Mouse Thymus lysate;
 Primary Ab: 1µg/ml Rabbit Anti-Human TMPO Antibody
 Second Ab: 0.2µg/mL HRP-Linked Caprine Anti-Rabbit IgG Polyclonal Antibody
 (Catalog: SAA544Rb19)



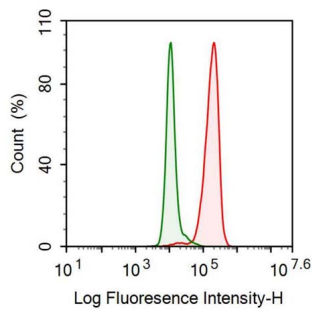
Western Blot; Sample: Human HeLa cell lysate;
 Primary Ab: 1µg/ml Rabbit Anti-Human TMPO Antibody
 Second Ab: 0.2µg/mL HRP-Linked Caprine Anti-Rabbit IgG Polyclonal Antibody
 (Catalog: SAA544Rb19)



Western Blot; Sample: Human Lung lysate;
 Primary Ab: 1µg/ml Rabbit Anti-Human TMPO Antibody
 Second Ab: 0.2µg/mL HRP-Linked Caprine Anti-Rabbit IgG Polyclonal Antibody
 (Catalog: SAA544Rb19)



FITC staining on IF;
 Samples: Human HeLa Cells;
 Primary Ab: 20µg/ml Rabbit Anti-Human TMPO Antibody
 Second Ab: 1µg/ml FITC-Linked Caprine Anti-Rabbit IgG Polyclonal Antibody
 (Catalog: SAA544Rb18)



Human K562 cell was fixed with 2% paraformaldehyde (10 min) , permeabilised with 0.2% BSA-Triton X-100, then stained with 20µg/ml rabbit Anti-human TMPO Polyclonal Antibody (Catalog PAC664Hu02, red histogram) or Isotype control antibody (Catalog IS067-Rb01, green histogram), followed by 1µg/ml FITC-conjugated Anti-rabbit IgG Secondary Antibody (Catalog SAA544Rb18).

[IMPORTANT NOTE]

The kit is designed for research use only, we will not be responsible for any issue if the kit was used in clinical diagnostic or any other procedures.