

**PAN011Ra01**

**Polyclonal Antibody to Transmembrane Protein 173 (TMEM173)**

**Organism Species: *Rattus norvegicus* (Rat)**

***Instruction manual***

FOR RESEARCH USE ONLY

NOT FOR USE IN CLINICAL DIAGNOSTIC PROCEDURES

---

13th Edition (Revised in Aug, 2023)

**[ PROPERTIES ]**

**Source:** Polyclonal antibody preparation

**Host:** Rabbit

**Purification:** Antigen-specific affinity chromatography followed by Protein A affinity chromatography

**Traits:** Liquid

**Concentration:** 0.5mg/mL

**UOM:** 100µL

**Cross Reactivity:** Mouse

**Applications:** WB; IHC

**[ IMMUNOGEN ]**

**Immunogen:** Recombinant TMEM173 (Ala160~Leu363) expressed in *E.coli*

**Accession No.:** RPN011Ra01

**[ APPLICATIONS ]**

Western blotting: 0.01-3µg/mL;

Immunohistochemistry: 5-20µg/mL;

Optimal working dilutions must be determined by end user.

**[ FORMULATION ]**

**Form & Buffer:** Supplied as solution form in PBS, pH7.4, containing 0.02% NaN<sub>3</sub>, 50% glycerol.

**[ STORAGE AND STABILITY ]**

**Storage:** Avoid repeated freeze/thaw cycles.

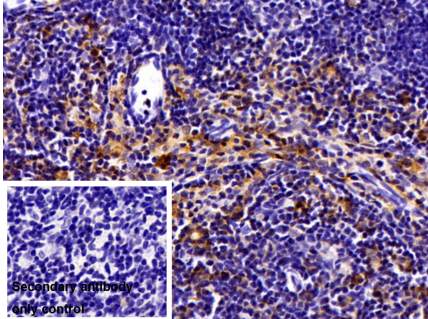
Store at 4°C for frequent use.

Aliquot and store at -20°C for 24 months.

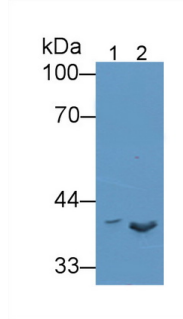
**Stability Test:** The thermal stability is described by the loss rate. The loss rate was determined by accelerated thermal degradation test, that is, incubate the protein at 37°C for 48h, and no obvious degradation and precipitation were observed. The loss rate is less than 5% within the

expiration date under appropriate storage condition.

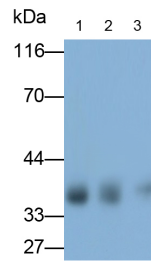
**[ IDENTIFICATION ]**



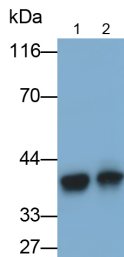
DAB staining on IHC-P; Sample: Rat Thymus Tissue Primary Ab: 10µg/ml Rabbit Anti-Rat TMEM173 Antibody Control: Used PBS instead of primary antibody Second Ab: 2?g/ml HRP-Linked Caprine Anti-Rabbit IgG Polyclonal Antibody (Catalog: SAA544Rb19)



Western Blot; Sample: Lane1: Rat Thymus lysate; Lane2: Rat Spleen lysate Primary Ab: 3µg/mL Rabbit Anti-Rat TMEM173 Antibody Second Ab: 0.2µg/mL HRP-Linked Caprine Anti-Rabbit IgG Polyclonal Antibody (Catalog: SAA544Rb19)



Western Blot; Samples: Lane1: Mouse Thymus lysate; Lane2: Mouse Spleen lysate; Lane3: Mouse Lung lysate; Primary Ab: 0.1µg/ml Rabbit Anti-Rat TMEM173 Antibody Second Ab: 0.2?g/ml HRP-Linked Caprine Anti-Rabbit IgG Polyclonal Antibody (Catalog: SAA544Rb19)



Western Blot; Samples: Lane1: Rat Thymus lysate; Lane2: Rat Lung lysate; Primary Ab: 0.3µg/ml Rabbit Anti-Rat TMEM173 Antibody Second Ab: 0.2?g/ml HRP-Linked Caprine Anti-Rabbit IgG Polyclonal Antibody (Catalog: SAA544Rb19)

**[ IMPORTANT NOTE ]**

The kit is designed for research use only, we will not be responsible for any issue if the kit was used in clinical diagnostic or any other procedures.