

PAA133Hu01

Polyclonal Antibody to Tumor Necrosis Factor Alpha (TNF α)

Organism Species: *Homo sapiens* (Human)

Instruction manual

FOR RESEARCH USE ONLY

NOT FOR USE IN CLINICAL DIAGNOSTIC PROCEDURES

13th Edition (Revised in Aug, 2023)

[PROPERTIES]

Source: Polyclonal antibody preparation

Host: Rabbit

Purification: Antigen-specific affinity chromatography followed by Protein A affinity chromatography

Traits: Liquid

Concentration: 0.5mg/mL

UOM: 100µL

Cross Reactivity: Mouse

Applications: WB; IHC; ICC/IF

[IMMUNOGEN]

Immunogen: Recombinant TNFα (Val77~Leu233) expressed in *E.coli*

Accession No.: RPA133Hu01

[APPLICATIONS]

Western blotting: 0.01-2µg/mL;

Immunohistochemistry: 5-20µg/mL;

Immunofluorescence:5-20µg/mL;

Optimal working dilutions must be determined by end user.

[FORMULATION]

Form & Buffer: Supplied as solution form in PBS, pH7.4, containing 0.02% NaN₃, 50% glycerol.

[STORAGE AND STABILITY]

Storage: Avoid repeated freeze/thaw cycles.

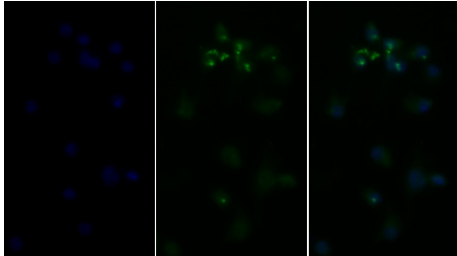
Store at 4°C for frequent use.

Aliquot and store at -20°C for 24 months.

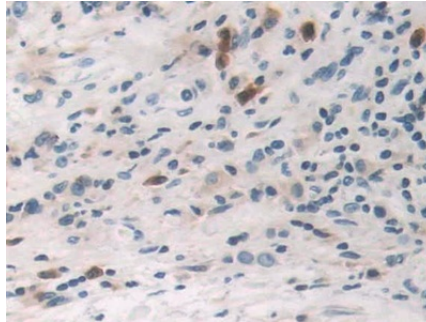
Stability Test: The thermal stability is described by the loss rate. The loss rate was determined by accelerated thermal degradation test, that is, incubate the protein at 37°C for 48h, and no

obvious degradation and precipitation were observed. The loss rate is less than 5% within the expiration date under appropriate storage condition.

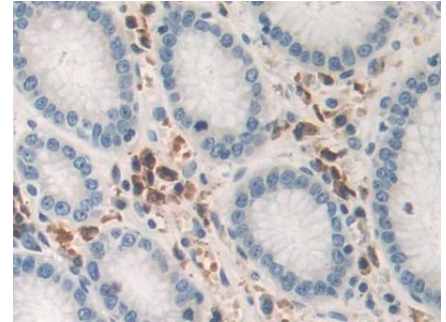
[IDENTIFICATION]



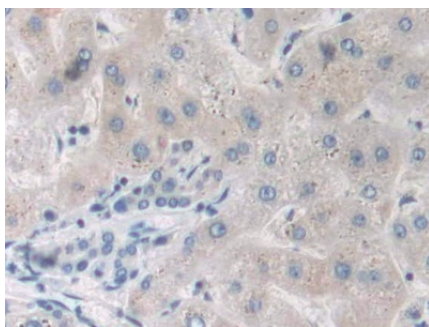
FITC staining on IF; Sample: RAW264.7 cell treated with 5?g/ml Lipo polysaccharide(LPS) and 2?M Monensin for 1 night. Primary Ab: 20?g/ml Rabbit Anti-Human TNFa Antibody Second Ab: 1.5?g/ml FITC-Linked Caprine Anti-Rabbit IgG Polyclonal Antibody (Catalog: SAA544Rb18)



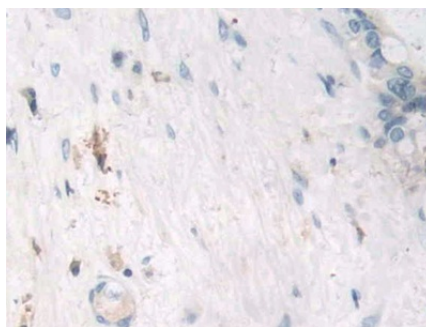
DAB staining on IHC-P; Sample: Human Stomach cancer Tissue; Primary Ab: 10?g/ml Rabbit Anti-Human TNFa Antibody Second Ab: 2?g/mL HRP-Linked Caprine Anti-Rabbit IgG Polyclonal Antibody (Catalog: SAA544Rb19)



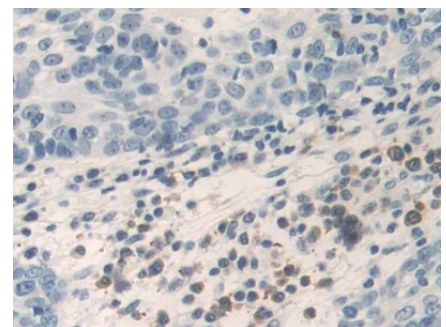
DAB staining on IHC-P; Sample: Human Stomach Tissue; Primary Ab: 10?g/ml Rabbit Anti-Human TNFa Antibody Second Ab: 2?g/mL HRP-Linked Caprine Anti-Rabbit IgG Polyclonal Antibody (Catalog: SAA544Rb19)



DAB staining on IHC-P; Sample: Human Liver Tissue; Primary Ab: 10?g/ml Rabbit Anti-Human TNFa Antibody Second Ab: 2?g/mL HRP-Linked Caprine Anti-Rabbit IgG Polyclonal Antibody (Catalog: SAA544Rb19)

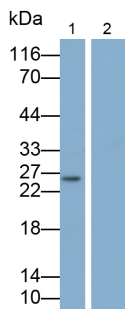


DAB staining on IHC-P; Sample: Human Bile duct cancer Tissue; Primary Ab: 10?g/ml Rabbit Anti-Human TNFa Antibody Second Ab: 2?g/mL HRP-Linked Caprine Anti-Rabbit IgG Polyclonal Antibody



DAB staining on IHC-P; Sample: Human Skin cancer Tissue; Primary Ab: 10?g/ml Rabbit Anti-Human TNFa Antibody Second Ab: 2?g/mL HRP-Linked Caprine Anti-Rabbit IgG Polyclonal Antibody (Catalog: SAA544Rb19)

(Catalog: SAA544Rb19)



Western Blot; Samples: Lane1: THP1 treated with 80nM PMA overnight, replacing the culture medium with 100ng/ml LPS for 6 hours, and finally adding 2µg/ml monensin for 3 hours, cell precipitation; Lane2: Untreated THP1 cell lysate;

Primary Ab: 0.2µg/ml Rabbit Anti-Human TNF α Antibody

Second Ab: 0.2µg/ml HRP-Linked Caprine Anti-Rabbit IgG Polyclonal Antibody

(Catalog: SAA544Rb19)

[**IMPORTANT NOTE**]

The kit is designed for research use only, we will not be responsible for any issue if the kit was used in clinical diagnostic or any other procedures.