

**PAD926Mu01**

**Polyclonal Antibody to Tumor Necrosis Factor Receptor Superfamily, Member 14  
(TNFRSF14)**

**Organism Species: *Mus musculus* (Mouse)**

***Instruction manual***

FOR RESEARCH USE ONLY  
NOT FOR USE IN CLINICAL DIAGNOSTIC PROCEDURES

---

13th Edition (Revised in Aug, 2023)

## **[ PROPERTIES ]**

**Source:** Polyclonal antibody preparation

**Host:** Rabbit

**Purification:** Antigen-specific affinity chromatography followed by Protein A affinity chromatography

**Traits:** Liquid

**Concentration:** 0.5mg/mL

**UOM:** 100µL

**Cross Reactivity:** N/A

**Applications:** IHC

## **[ IMMUNOGEN ]**

**Immunogen:** Recombinant TNFRSF14 (Glu45~Glu262) expressed in *E.coli*

**Accession No.:** RPD926Mu01

## **[ APPLICATIONS ]**

Immunohistochemistry: 5-20µg/mL;

Optimal working dilutions must be determined by end user.

## **[ FORMULATION ]**

**Form & Buffer:** Supplied as solution form in PBS, pH7.4, containing 0.02% NaN<sub>3</sub>, 50% glycerol.

## **[ STORAGE AND STABILITY ]**

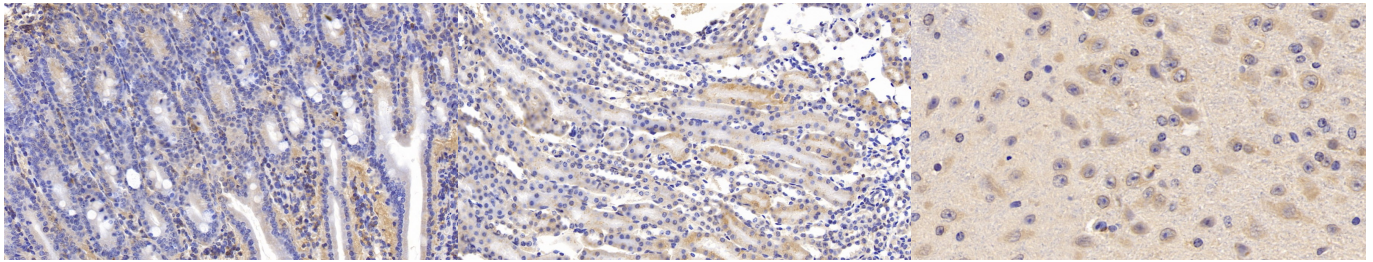
**Storage:** Avoid repeated freeze/thaw cycles.

Store at 4°C for frequent use.

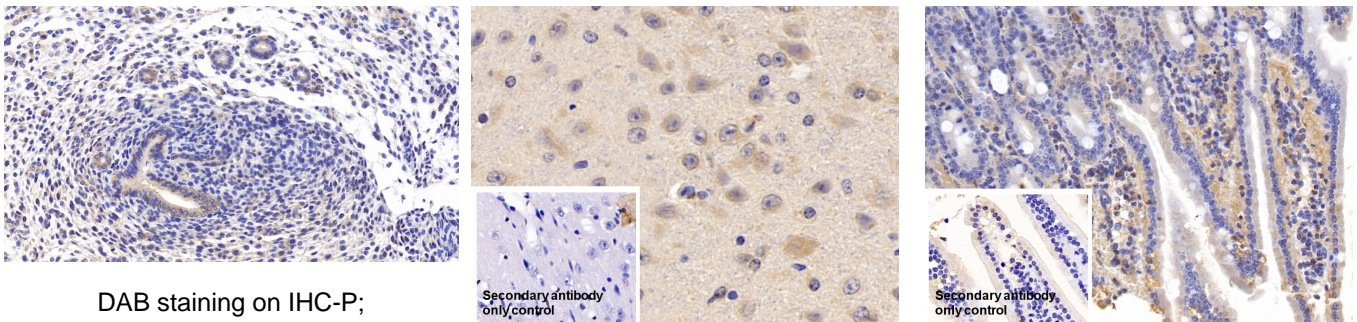
Aliquot and store at -20°C for 24 months.

**Stability Test:** The thermal stability is described by the loss rate. The loss rate was determined by accelerated thermal degradation test, that is, incubate the protein at 37°C for 48h, and no obvious degradation and precipitation were observed. The loss rate is less than 5% within the expiration date under appropriate storage condition.

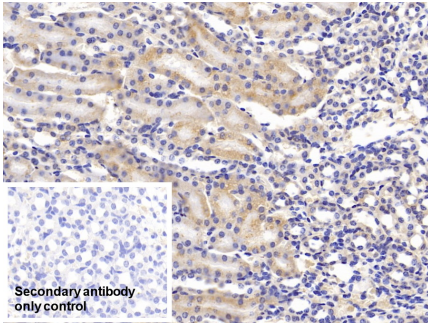
**[ IDENTIFICATION ]**



<p>DAB staining on IHC-P;                  Samples: Mouse Small intestine Tissue;                  Primary Ab: 20µg/ml Rabbit Anti-Mouse TNFRSF14 Antibody                  Second Ab: 2µg/mL HRP-Linked Caprine Anti-Rabbit IgG Polyclonal Antibody                  (Catalog: SAA544Rb19)</p>	<p>DAB staining on IHC-P;                  Samples: Mouse Kidney Tissue;                  Primary Ab: 20µg/ml Rabbit Anti-Mouse TNFRSF14 Antibody                  Second Ab: 2µg/mL HRP-Linked Caprine Anti-Rabbit IgG Polyclonal Antibody                  (Catalog: SAA544Rb19)</p>	<p>DAB staining on IHC-P;                  Samples: Mouse Cerebrum Tissue;                  Primary Ab: 20µg/ml Rabbit Anti-Mouse TNFRSF14 Antibody                  Second Ab: 2µg/mL HRP-Linked Caprine Anti-Rabbit IgG Polyclonal Antibody                  (Catalog: SAA544Rb19)</p>
---	--	--



<p>DAB staining on IHC-P;                  Samples: Mouse Uterus Tissue;                  Primary Ab: 20µg/ml Rabbit Anti-Mouse TNFRSF14 Antibody                  Second Ab: 2µg/mL HRP-Linked Caprine Anti-Rabbit IgG Polyclonal Antibody                  (Catalog: SAA544Rb19)</p>	<p>DAB staining on IHC-P;                  Sample: Mouse Cerebrum Tissue                  Primary Ab: 20µg/ml Rabbit Anti-Mouse TNFRSF14 Antibody                  Control: Used PBS instead of primary antibody                  Second Ab: 2µg/ml HRP-Linked Caprine Anti-Rabbit IgG Polyclonal Antibody                  (Catalog: SAA544Rb19)</p>	<p>DAB staining on IHC-P;                  Sample: Mouse Small intestine Tissue                  Primary Ab: 20µg/ml Rabbit Anti-Mouse TNFRSF14 Antibody                  Control: Used PBS instead of primary antibody                  Second Ab: 2µg/ml HRP-Linked Caprine Anti-Rabbit IgG Polyclonal Antibody                  (Catalog: SAA544Rb19)</p>
--	---	--



DAB staining on IHC-P;

Sample: Mouse Kidney Tissue

Primary Ab: 20µg/ml Rabbit Anti-Mouse

TNFRSF14 Antibody

Control: Used PBS instead of primary  
antibody

Second Ab: 2µg/ml HRP-Linked

Caprine Anti-Rabbit IgG Polyclonal

Antibody

(Catalog: SAA544Rb19)

### **[ IMPORTANT NOTE ]**

The kit is designed for research use only, we will not be responsible for any issue if the kit was used in clinical diagnostic or any other procedures.