

PAL630Hu01

Polyclonal Antibody to Ubiquitin Cross Reactive Protein (UCRP)

Organism Species: *Homo sapiens (Human)*

Instruction manual

FOR RESEARCH USE ONLY

NOT FOR USE IN CLINICAL DIAGNOSTIC PROCEDURES

13th Edition (Revised in Aug, 2023)

[**PROPERTIES**]

Source: Polyclonal antibody preparation

Host: Rabbit

Purification: Antigen-specific affinity chromatography followed by Protein A affinity chromatography

Traits: Liquid

Concentration: 0.45mg/mL

UOM: 100µL

Cross Reactivity: Porcine.

Applications: WB; IHC

[**IMMUNOGEN**]

Immunogen: Recombinant UCRP (Gly2~Gly157) expressed in *E.coli*

Accession No.: RPL630Hu01

[**APPLICATIONS**]

Western blotting: 0.01-3µg/mL;

Immunohistochemistry: 5-30µg/mL;

Immunocytochemistry: 5-30µg/mL;

Optimal working dilutions must be determined by end user.

[**FORMULATION**]

Form & Buffer: Supplied as solution form in 0.01M PBS, pH7.4, containing 0.05% Proclin-300, 50% glycerol.

[**STORAGE AND STABILITY**]

Storage: Avoid repeated freeze/thaw cycles.

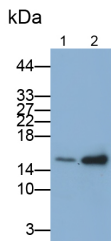
Store at 4°C for frequent use.

Aliquot and store at -20°C for 24 months.

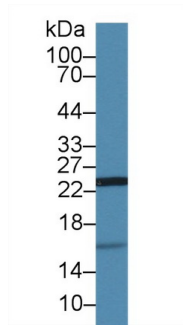
Stability Test: The thermal stability is described by the loss rate. The loss rate was determined by accelerated thermal degradation test, that is, incubate the protein at 37°C for 48h, and no

obvious degradation and precipitation were observed. The loss rate is less than 5% within the expiration date under appropriate storage condition.

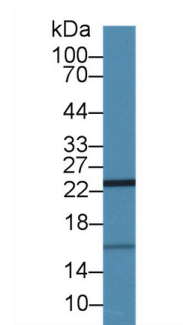
[IDENTIFICATION]



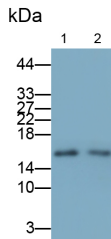
Western Blot; Samples: Lane1: Hela cell lysate; Lane2: MCF7 cell lysate;
 Primary Ab: 0.3µg/ml Rabbit Anti-Human UCRP Antibody
 Second Ab: 0.2µg/ml HRP-Linked Caprine Anti-Rabbit IgG Polyclonal Antibody
 (Catalog: SAA544Rb19)



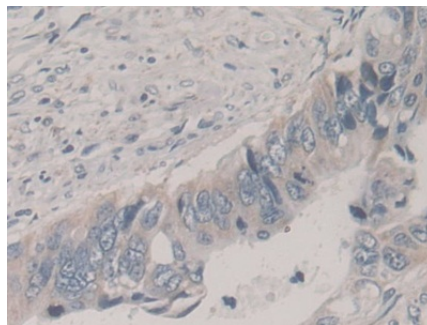
Western Blot; Sample: Porcine Kidney lysate;
 Primary Ab: 1µg/ml Rabbit Anti-Human UCRP Antibody
 Second Ab: 0.2µg/mL HRP-Linked Caprine Anti-Rabbit IgG Polyclonal Antibody
 (Catalog: SAA544Rb19)



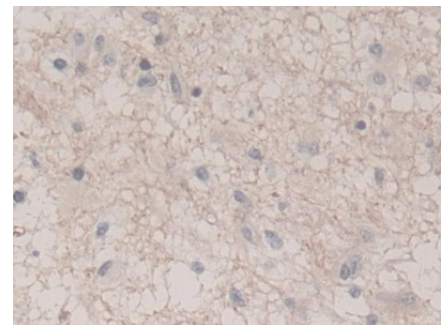
Western Blot; Sample: Porcine Cerebrum lysate;
 Primary Ab: 1µg/ml Rabbit Anti-Human UCRP Antibody
 Second Ab: 0.2µg/mL HRP-Linked Caprine Anti-Rabbit IgG Polyclonal Antibody
 (Catalog: SAA544Rb19)



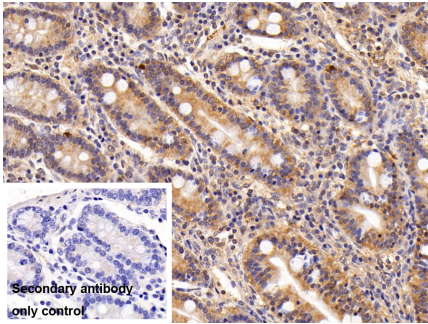
Western Blot; Samples: Lane1: HUH7 cell lysate; Lane2: PC3 cell lysate;
 Primary Ab: 0.3µg/ml Rabbit Anti-Human UCRP Antibody
 Second Ab: 0.2µg/ml HRP-Linked Caprine Anti-Rabbit IgG Polyclonal Antibody
 (Catalog: SAA544Rb19)



DAB staining on IHC-P;
 Samples: Human Colorectal cancer Tissue;
 Primary Ab: 30µg/ml Rabbit Anti-Human UCRP Antibody
 Second Ab: 2µg/mL HRP-Linked Caprine Anti-Rabbit IgG Polyclonal Antibody
 (Catalog: SAA544Rb19)



DAB staining on IHC-P;
 Samples: Human Glioma Tissue;
 Primary Ab: 30µg/ml Rabbit Anti-Human UCRP Antibody
 Second Ab: 2µg/mL HRP-Linked Caprine Anti-Rabbit IgG Polyclonal Antibody
 (Catalog: SAA544Rb19)



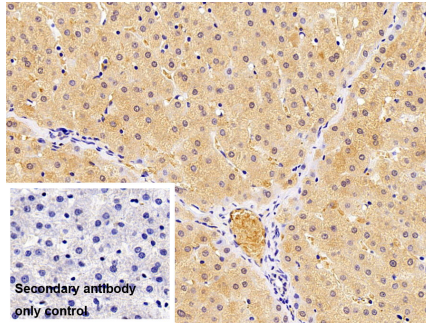
DAB staining on IHC-P;

Sample: Porcine Small intestine Tissue;

Primary Ab: 20?g/ml Rabbit Anti-Human UCRP Antibody

Second Ab: 2µg/mL HRP-Linked Caprine Anti-Rabbit IgG Polyclonal Antibody

(Catalog: SAA544Rb19)



DAB staining on IHC-P;

Sample: Porcine Liver Tissue

Primary Ab: 10µg/ml Rabbit Anti-Human UCRP Antibody

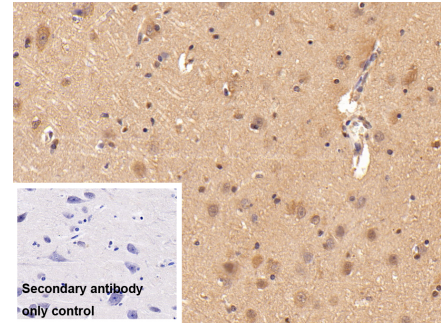
Control: Used PBS instead of primary antibody

Second Ab: 2?g/ml HRP-Linked

Caprine Anti-Rabbit IgG Polyclonal

Antibody

(Catalog: SAA544Rb19)



DAB staining on IHC-P;

Sample: Porcine Cerebrum Tissue;

Primary Ab: 20?g/ml Rabbit Anti-Human UCRP Antibody

Second Ab: 2µg/mL HRP-Linked Caprine Anti-Rabbit IgG Polyclonal Antibody

(Catalog: SAA544Rb19)

[**IMPORTANT NOTE**]

The kit is designed for research use only, we will not be responsible for any issue if the kit was used in clinical diagnostic or any other procedures.