

**PAF557Ra01**

**Polyclonal Antibody to Uncoupling Protein 1, Mitochondrial (UCP1)**

**Organism Species: *Rattus norvegicus* (Rat)**

***Instruction manual***

FOR RESEARCH USE ONLY

NOT FOR USE IN CLINICAL DIAGNOSTIC PROCEDURES

---

13th Edition (Revised in Aug, 2023)

**[ PROPERTIES ]**

**Source:** Polyclonal antibody preparation

**Host:** Rabbit

**Purification:** Antigen-specific affinity chromatography followed by Protein A affinity chromatography

**Traits:** Liquid

**Concentration:** 0.28mg/mL

**UOM:** 100µL

**Cross Reactivity:** N/A

**Applications:** WB

**[ IMMUNOGEN ]**

**Immunogen:** Recombinant UCP1 (Pro179~Leu296 (Accession # P04633)) expressed in *E.coli*

**Accession No.:** RPF557Ra01

**[ APPLICATIONS ]**

Western blotting: 0.01-3µg/mL;

Optimal working dilutions must be determined by end user.

**[ FORMULATION ]**

**Form & Buffer:** Supplied as solution form in PBS, pH7.4, containing 0.02% NaN<sub>3</sub>, 50% glycerol.

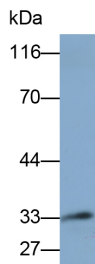
**[ STORAGE AND STABILITY ]**

**Storage:** Avoid repeated freeze/thaw cycles.

Store at 4°C for frequent use.

Aliquot and store at -20°C for 24 months.

**Stability Test:** The thermal stability is described by the loss rate. The loss rate was determined by accelerated thermal degradation test, that is, incubate the protein at 37°C for 48h, and no obvious degradation and precipitation were observed. The loss rate is less than 5% within the expiration date under appropriate storage condition.

**[ IDENTIFICATION ]**

Western Blot; Sample: Rat Adrenal  
gland lysate

Primary Ab: 0.3 $\mu$ g/ml Rabbit Anti-Rat  
UCP1 Antibody

Second Ab: 0.2 $\mu$ g/ml HRP-Linked  
Caprine Anti-Rabbit IgG Polyclonal  
Antibody

(Catalog: SAA544Rb19)

**[ IMPORTANT NOTE ]**

The kit is designed for research use only, we will not be responsible for any issue if the kit was used in clinical diagnostic or any other procedures.