



CSI073Gu01

Primary Guinea pig Adult Epidermal Keratinocytes (AEK)

Organism Species: *Cavia* (Guinea pig)

Instruction manual

FOR RESEARCH USE ONLY

NOT FOR USE IN CLINICAL DIAGNOSTIC PROCEDURES

1st Edition (Revised in Jun, 2026)

[DESCRIPTION]

Cell Type: Keratinocyte

Synonyms: AEK

Species: *Cavia* (Guinea pig)

Age: 6 months

Tissue Source: Epidermis

Disease: Normal

Size: $>5 \times 10^5$ cells/vial

Growth properties: Adherent

Morphology: Cobblestone appearance

[PROPERTIES]

Cell activity: $>85\%$ (Viability by Trypan Blue Exclusion).

Formulation: Frozen 1 mL or T25 flask.

Biosafety: Negative for HIV-1, HBV, HCV, mycoplasma, bacteria, yeast and fungi.

Applications: For research use only. It is not approved for human or animal use, or for application in clinical diagnostic procedures.

[CONTENTS]

Form & Buffer: Supplied as solution form in frozen stock solution, containing 90% FBS+10% DMSO.

AEK are cryopreserved at P0 and delivered frozen.

[USAGE]

Upon receiving the cells in a T-25 flask at room temperature, immediately transfer the cells to 37°C, 5% incubator; the cells in vials, directly and immediately transfer the cells from dry ice to liquid nitrogen.

Culture conditions:

Coating conditions: Rat tail collagen I (2-5 ug/cm²)

Keratinocyte-SFM+ 1% Keratinocyte Growth Supplement +1%Penicillin-Streptomycin Solution

Temperature: 37°C

Condition: 95% air, 5% carbon dioxide

Medium Renewal: Every 2 to 3 days

Dissociation Solution: 0.25% Trypsin



Cell recovery:

After receiving the cells, shake at 37°C in a water bath until completely dissolved, transfer to a 15 ml centrifuge tube, add 3-5 times complete culture solution, 1000 rpm for 5 min, discard the supernatant, and place in a T25 flask for culture.

Cell passage:

1. Cell passage when cell growth at 80%.
2. Discard the medium and wash with PBS 1-2 times.
3. Add 1 ml of Trypsin at 37°C, observe the cell under the microscope. If the cells are retracted and rounded, pat the culture flask to let the cells fall off. Stop digestion by adding 2 ml of complete medium containing 10% serum. Make it a single cell suspension.
4. Add the fresh medium to resuspend the cells. Unless otherwise stated, the recommended ratio of primary cells is 1/2.

[STORAGE]

Upon receiving, directly and immediately transfer the cells from dry ice to liquid nitrogen and keep the cells in liquid nitrogen until they are needed for experiments.

[Shipping]

Dry ice.

[IMPORTANT NOTE]

1. The cultured cycle of Primary Guinea pig Adult Epidermal Keratinocytes (AEK) is limited *in vitro*. It is recommended to use the specialized growth medium provided by Cloud-Clone Corp. and follow the correct operational procedures to ensure optimal culture conditions for these cells.
2. It is recommended that culture bottles be coated with Collagen type I from rat tail, and the concentration of rat tail collagen coating is 2-5µg/cm².
3. The cell is for research use only, and we will not be responsible for any issue if the cell was used in clinical diagnostic or any other procedures.

[Figure]

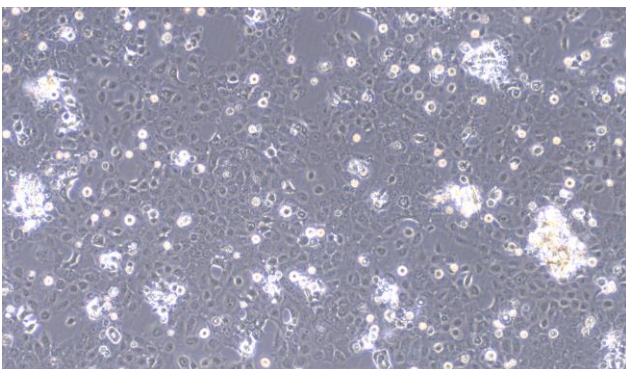


Figure 1

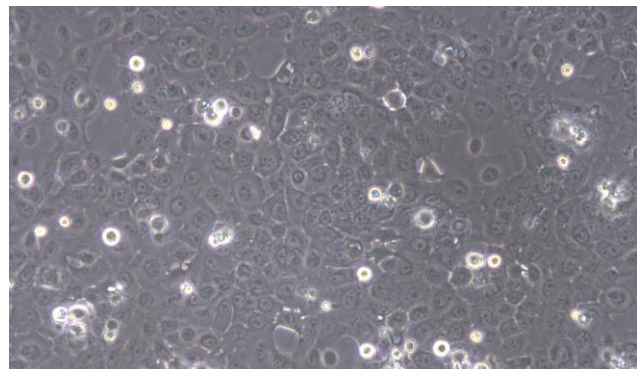


Figure 2



Figure 1 Morphology of Guinea pig Adult Epidermal Keratinocytes (Optical microscope, x100)

Figure 2 Morphology of Guinea pig Adult Epidermal Keratinocytes (Optical microscope, x200)