

**RPC116Hu01 100µg**

**Recombinant Activin A Receptor Type I C (ACVR1C)**

**Organism Species: *Homo sapiens (Human)***

***Instruction manual***

FOR RESEARCH USE ONLY

NOT FOR USE IN CLINICAL DIAGNOSTIC PROCEDURES

---

13th Edition (Revised in Aug, 2023)

**[ PROPERTIES ]**

**Source:** Prokaryotic expression

**Host:** *E.coli*

**Residues:** Glu21~Ala493

**Tags:** N-terminal His Tag

**Subcellular Location:** Membrane

**Purity:** > 90%

**Traits:** Freeze-dried powder

**Buffer formulation:** PBS, pH7.4, containing 0.01% Sarcosyl, 5% Trehalose.

**Original Concentration:** 200µg/mL

**Applications:** Positive Control; Immunogen; SDS-PAGE; WB.

(May be suitable for use in other assays to be determined by the end user.)

**Predicted isoelectric point:** 8.0

**Predicted Molecular Mass:** 56.5kDa

**Accurate Molecular Mass:** 57kDa as determined by SDS-PAGE reducing conditions.

**[ USAGE ]**

Reconstitute in 10mM PBS (pH7.4) to a concentration of 0.1-1.0 mg/mL. Do not vortex.

**[ STORAGE AND STABILITY ]**

**Storage:** Avoid repeated freeze/thaw cycles.

Store at 2-8°C for one month.

Aliquot and store at -80°C for 12 months.

**Stability Test:** The thermal stability is described by the loss rate. The loss rate was determined by accelerated thermal degradation test, that is, incubate the protein at 37°C for 48h, and no obvious degradation and precipitation were observed. The loss rate is less than 5% within the expiration date under appropriate storage condition.

**[ SEQUENCE ]**

```

                ELSPLGLKCVC  LLCSSNFTC  QTEGACWASV
MLTNGKEQVI  KSCVSLPELN  AQVFCHSSNN  VTKTECCFTD  FCNNITLHLP
TASPNAKLG  PMELAIITV  PVCLLSIAAM  LTVWACQGRQ  CSYRKKRPN
VEEPLSECNL  VNAGKTLKDL  IYDVTASGSG  SGLPLLQRT  IARTIVLQEI
VGKGRFGEVW  HGRWCGEDVA  VKIFSSRDER  SWFREAEIYQ  TVMLRHENIL
GFIAADNKDN  GTWTQLWLVS  EYHEQGSLYD  YLNRNIVTVA  GMIKLALSIA
SGLAHLHMEI  VGTQGKPAIA  HRDIKSKNIL  VKKCETCAIA  DLGLAVKHDS
ILNTIDIPQN  PKVGTKRYMA  PEMLDDTMNV  NIFESFKRAD  IYSVGLVYWE
IARRCSVGGI  VEEYQLPYD  MVPSPSIEE  MRKVCDQKF  RPSIPNQWS
CEALRVMGRI  MRECWYANGA  ARLTALRIK  TISQLCVKED  CKA
    
```

**[ IDENTIFICATION ]**

CGATTGGATCTGGGCTGAGGAGATGCTTTGGGATCTCAACTTACTGCAACAGAGGAGATGTTGGGATGAGTGTACCAATGGAAAGGAGGATCAATCTGGTCTCTTGGAGCTGATGCTCAAGCTCTGCTGATGTTCCACATGTTTCAAAACCGATCTCTTCAAGTTTTCACACATAGCTGCCTTCAAG

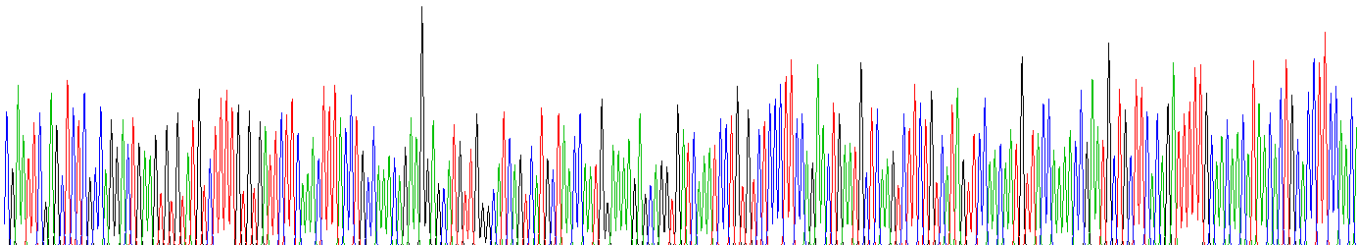
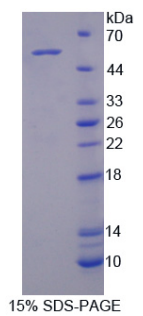


Figure . Gene Sequencing (extract)



**[ IMPORTANT NOTE ]**

The kit is designed for research use only, we will not be responsible for any issue if the kit was used in clinical diagnostic or any other procedures.