

**RPC003Mu02 25mg**

**Recombinant Apolipoprotein B (APOB)**

**Organism Species: *Mus musculus* (Mouse)**

***Instruction manual***

FOR RESEARCH USE ONLY

NOT FOR USE IN CLINICAL DIAGNOSTIC PROCEDURES

---

13th Edition (Revised in Aug, 2023)

## **[ PROPERTIES ]**

**Source:** Prokaryotic expression

**Host:** *E.coli*

**Residues:** Leu32~Met306

**Tags:** Two N-terminal Tags, His-tag and SUMO-tag

**Subcellular Location:** Secreted, Cytoplasm

**Purity:** > 95%

**Traits:** Freeze-dried powder

**Buffer formulation:** PBS, pH7.4, containing 0.01% SKL, 5% Trehalose.

**Original Concentration:** 800µg/mL

**Applications:** Positive Control; Immunogen; SDS-PAGE; WB.

(May be suitable for use in other assays to be determined by the end user.)

**Predicted isoelectric point:** 8.2

**Predicted Molecular Mass:** 44.7kDa

**Accurate Molecular Mass:** 50kDa as determined by SDS-PAGE reducing conditions.

### **Phenomenon explanation:**

The possible reasons that the actual band size differs from the predicted are as follows:

1. Splice variants: Alternative splicing may create different sized proteins from the same gene.
2. Relative charge: The composition of amino acids may affect the charge of the protein.
3. Post-translational modification: Phosphorylation, glycosylation, methylation etc.
4. Post-translation cleavage: Many proteins are synthesized as pro-proteins, and then cleaved to give the active form.
5. Polymerization of the target protein: Dimerization, multimerization etc.

## **[ USAGE ]**

Reconstitute in ddH<sub>2</sub>O to a concentration of 1.0-2.5 mg/mL. Do not vortex.

## **[ STORAGE AND STABILITY ]**

**Storage:** Avoid repeated freeze/thaw cycles.

Store at 2-8°C for one month.

Aliquot and store at -80°C for 12 months.

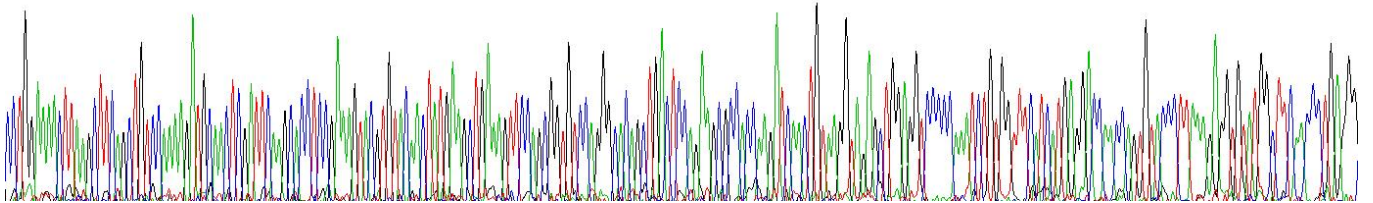
**Stability Test:** The thermal stability is described by the loss rate. The loss rate was determined by accelerated thermal degradation test, that is, incubate the protein at 37°C for 48h, and no obvious degradation and precipitation were observed. The loss rate is less than 5% within the expiration date under appropriate storage condition.

**[ SEQUENCE ]**

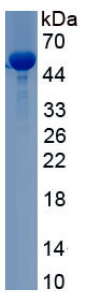
SSGVQGTADS	RSATKINCKV	ELEVPQICGF	LENLSFSCP	KDATRFKHLR	KVVYNYEAES
EFAAAMSRYE	LKLAIPEGKQ	IVLYPDKDEP	IMRTNQCTLK	EVYGFNPEGK	ALMKKTKNSE
TVYGNCSSTQV	TVNSRKGTVP	TEMSTERNLQ	KYILNIKIRGI	ISALLVPPET	EEDQQELFLD
SSQTCQYTLT	PKRKHVSEAV	CDEQHLFLPF	QCDGFQPIST	SVSPLALIKG	LVHPLSTLIS
EGTNRM			SYKNKYGIMT	RVTQKLSLED	TPKINSRFFS

**[ IDENTIFICATION ]**

CCTGGAACTTAACTTCGCTGTCGAAAGATGACCTCGATTCAAGCACTCGAAGTTCGGTTCGACTATGACCTGAAAGTTCACCGGTGCGCAGCCGACGCTGACTCGAAGCCGCGCAGATCGACTGAAAGTTCAGGTTGACCTGGAGGTCGCCGAACTCTGAGGTTCATCATGACGACCAAGCGTTCACCTTAAAGGTTGATGCCTTCAACCTGAGCC  
LENLSFSCP KDATRFKHLR KVVYNYEAE SSSGVQGTADSR SATKINCKV ELEVPQICGF IHR TNQCTLKEVYGFNPEG



**Figure. Gene Sequencing (Extract)**



**Figure. SDS-PAGE**

**[ IMPORTANT NOTE ]**

The kit is designed for research use only, we will not be responsible for any issue if the kit was used in clinical diagnostic or any other procedures.