

**RPA449Mu01 200µg**

**Recombinant Caspase 7 (CASP7)**

**Organism Species: *Mus musculus* (Mouse)**

***Instruction manual***

FOR RESEARCH USE ONLY

NOT FOR USE IN CLINICAL DIAGNOSTIC PROCEDURES

---

13th Edition (Revised in Aug, 2023)

**[ PROPERTIES ]**

**Source:** Prokaryotic expression

**Host:** *E.coli*

**Residues:** Ala24~Asp198

**Tags:** N-terminal His Tag

**Subcellular Location:** Secreted

**Purity:** > 90%

**Traits:** Freeze-dried powder

**Buffer formulation:** PBS, pH7.4, containing 0.01% Sarcosyl, 5% Trehalose.

**Original Concentration:** 200µg/mL

**Applications:** Positive Control; Immunogen; SDS-PAGE; WB.

(May be suitable for use in other assays to be determined by the end user.)

**Predicted isoelectric point:** 8.6

**Predicted Molecular Mass:** 23.2kDa

**Accurate Molecular Mass:** 23kDa as determined by SDS-PAGE reducing conditions.

**[ USAGE ]**

Reconstitute in 10mM PBS (pH7.4) to a concentration of 0.1-1.0 mg/mL. Do not vortex.

**[ STORAGE AND STABILITY ]**

**Storage:** Avoid repeated freeze/thaw cycles.

Store at 2-8°C for one month.

Aliquot and store at -80°C for 12 months.

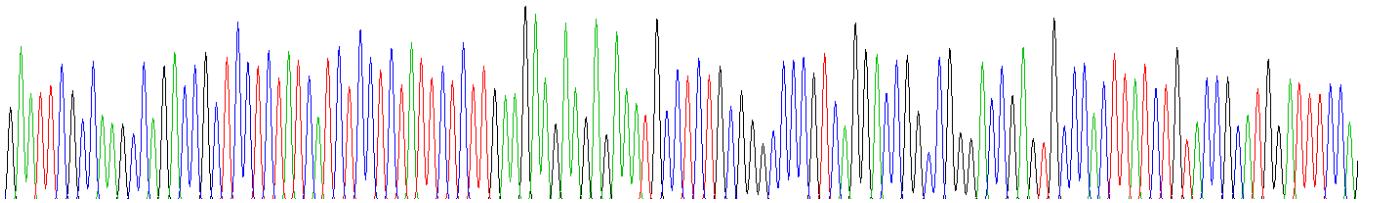
**Stability Test:** The thermal stability is described by the loss rate. The loss rate was determined by accelerated thermal degradation test, that is, incubate the protein at 37°C for 48h, and no obvious degradation and precipitation were observed. The loss rate is less than 5% within the expiration date under appropriate storage condition.

**[ SEQUENCE ]**

AKPDRSS IISSILLKKK RNASAGPVRT  
 GRDRVPTYLY RMDVQKMGKC IIINNKNFDK ATGMDVRNGT DKDAGALFKC  
 FQNLGFEVTV HNDSCAKMQ DLLRKASEED HSNSACFACV LLSHGEECLI  
 YGKDGVTPIK DLTAHFRGDR CKTLLEKPKL FFIQACRGTE LDDGIQAD

**[ IDENTIFICATION ]**

G A A T T C G C C A A G C C A G A C C G C T C C T C T A T C A T C T C C T C T A T T C T C T T G A A G A A G A A G A G A A A T G C C T C T G C G G G C C C G T C A G G A C C G G C C G G A C C G A G T G C C C A C T T A T C T G T A C C G C A T G G A T T T C C A T



**Figure . Gene Sequencing (extract)**

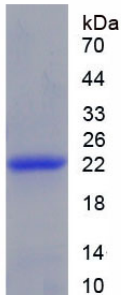


Figure. SDS-PAGE

**[ IMPORTANT NOTE ]**

The kit is designed for research use only, we will not be responsible for any issue if the kit was used in clinical diagnostic or any other procedures.