

RPL307Hu01 100µg

Recombinant Cat Eye Syndrome Chromosome Region, Candidate 1 (CECR1)

Organism Species: *Homo sapiens* (Human)

Instruction manual

FOR RESEARCH USE ONLY

NOT FOR USE IN CLINICAL DIAGNOSTIC PROCEDURES

13th Edition (Revised in Aug, 2023)

[**PROPERTIES**]

Source: Prokaryotic expression

Host: *E.coli*

Residues: Ile30~Lys511

Tags: N-terminal His Tag

Subcellular Location: Secreted

Purity: > 90%

Traits: Freeze-dried powder

Buffer formulation: PBS, pH7.4, containing 0.01% Sarcosyl, 5% Trehalose.

Original Concentration: 200µg/mL

Applications: Positive Control; Immunogen; SDS-PAGE; WB.

(May be suitable for use in other assays to be determined by the end user.)

Predicted isoelectric point: 8.2

Predicted Molecular Mass: 59.6kDa

Accurate Molecular Mass: 60kDa as determined by SDS-PAGE reducing conditions.

[**USAGE**]

Reconstitute in 10mM PBS (pH7.4) to a concentration of 0.1-1.0 mg/mL. Do not vortex.

[**STORAGE AND STABILITY**]

Storage: Avoid repeated freeze/thaw cycles.

Store at 2-8°C for one month.

Aliquot and store at -80°C for 12 months.

Stability Test: The thermal stability is described by the loss rate. The loss rate was determined by accelerated thermal degradation test, that is, incubate the protein at 37°C for 48h, and no obvious degradation and precipitation were observed. The loss rate is less than 5% within the expiration date under appropriate storage condition.

[**SEQUENCE**]

```

I DETRAHLLLK EKMMRLGGRL
VLNTKEELAN ERLMTLKIAE MKEAMRTLIF PPSMHFFQAK HLIERSQVFN
ILRMMPKGAA LHLHDIGIVT MDWLVRNVTY RPHCHICFTP RGIMQFRFAH
PTPRPSEKCS KWILLEDYRK RVQNVTEFDD SLLRNFTLVT QHPEVIYTNQ
NVVWSKFETI FFTISGLIHY APVFRDYVFR SMQEFYEDNV LYMEIRARLL
PVYELSGEHH DEEWSVKTYQ EVAQKFEVETH PEFIGIKIY SDHRSKDVAV
IAESIRMAMG LRIKFPTVVA GFDLVGHEDT GHSLHDYKEA LMIPAKDGVK
LPYFFHAGET DWQGTSIDRN ILDALMLNTT RIGHGFALSK HPAVRTYSWK
KDIPIEVCPI SNQVLKLVSD LRNHPVATLM ATGHPMVISS DDPAMFGAKG
LSYDFYEVFM GIGGMKADLR TLKQLAMNSI KYSTLLESEK NTFMEIWKKR
WDKFIADVAT K

```

[IDENTIFICATION]

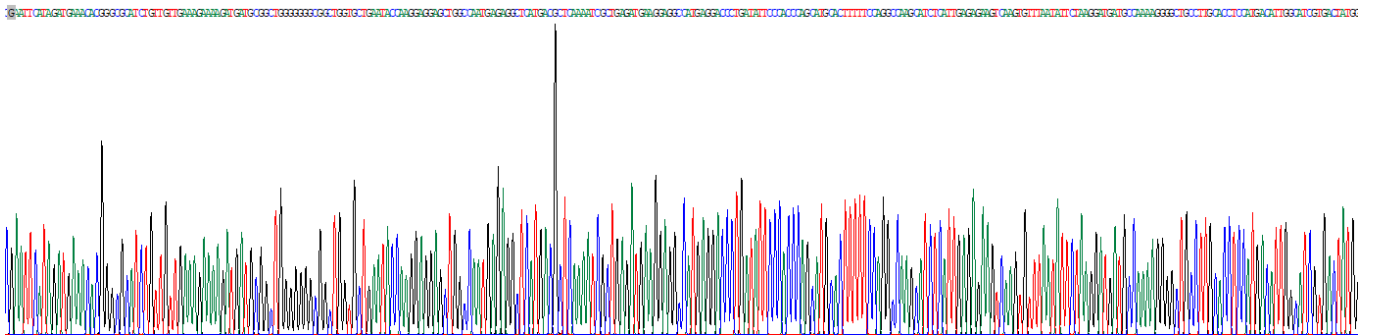


Figure . Gene Sequencing (extract)

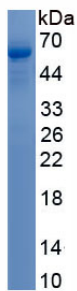


Figure. SDS-PAGE

[IMPORTANT NOTE]

The kit is designed for research use only, we will not be responsible for any issue if the kit was used in clinical diagnostic or any other procedures.