

RPA350Hu02 100µg

Recombinant Collagen Type I Alpha 1 (COL1a1)

Organism Species: *Homo sapiens (Human)*

Instruction manual

FOR RESEARCH USE ONLY

NOT FOR USE IN CLINICAL DIAGNOSTIC PROCEDURES

13th Edition (Revised in Aug, 2023)

[PROPERTIES]

Source: Prokaryotic expression

Host: *E.coli*

Residues: Ala1218~Ile1440

Tags: N-terminal His Tag

Subcellular Location: Secreted, Extracellular matrix

Purity: > 95%

Traits: Freeze-dried powder

Buffer formulation: 20mM Tris, 150mM NaCl, pH8.0, containing 0.01% skl, 5%Trehalose.

Original Concentration: 1000µg/mL

Applications: Positive Control; Immunogen; SDS-PAGE; WB.

(May be suitable for use in other assays to be determined by the end user.)

Predicted isoelectric point: 6.4

Predicted Molecular Mass: 26.4kDa

Accurate Molecular Mass: 28kDa as determined by SDS-PAGE reducing conditions.

[USAGE]

Reconstitute in 20mM Tris, 150mM NaCl (pH8.0) to a concentration of 0.1-1.0 mg/mL. Do not vortex.

[STORAGE AND STABILITY]

Storage: Avoid repeated freeze/thaw cycles.

Store at 2-8°C for one month.

Aliquot and store at -80°C for 12 months.

Stability Test: The thermal stability is described by the loss rate. The loss rate was determined by accelerated thermal degradation test, that is, incubate the protein at 37°C for 48h, and no obvious degradation and precipitation were observed. The loss rate is less than 5% within the expiration date under appropriate storage condition.

[SEQUENCE]

ADD ANVVRDRDLE VDTTLKSLSQ QIENIRSPEG
 SRKNPARTCR DLKMCHSDWK SGEYWIDPNQ GCNLDAIKVF CNMETGETCV
 YPTQPSVAQK NWYISKNPDK KRHVWFGESM TDGFQFEYGG QGSDPADVAI
 QLTFLRLMST EASQNITYHC KNSVAYMDQQ TGNLKKALLL QGSNEIEIRA
 EGNSRFTYSV TVDGCTSHTG AWGKTVIEYK TTKTSRLPII

[IDENTIFICATION]

TCGCTGATGATGCCAAATGGTTCTGACCGTGAACCTCGAGGTGGACACCACTCAAGAGCCGTAGCCAGCAGATCGAGAACATCCGGAGCCCAAGGGCAGCCGCAAGAAACCCGCCCCGACCTGCCGTGACCTCAAGATGTGCCACTCTGAC
 A D D A N V V R D R D L E V D T T L K S L S Q Q I E N I R S P E G S R K N P A R T C R D L K M C H S D

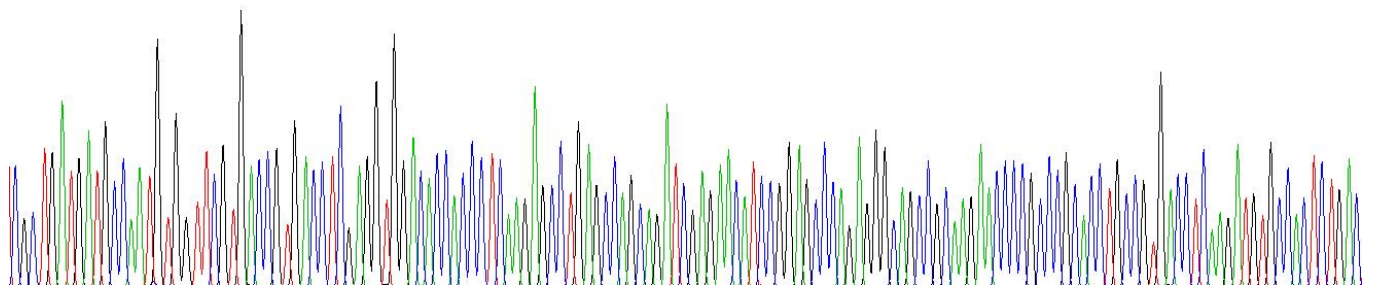


Figure. Gene Sequencing (Extract)

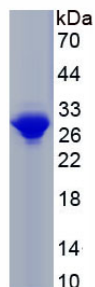


Figure. SDS-PAGE

[IMPORTANT NOTE]

The kit is designed for research use only, we will not be responsible for any issue if the kit was used in clinical diagnostic or any other procedures.