

RPD195Hu01 10µg

Recombinant Collagen Type III Alpha 1 (COL3a1)

Organism Species: *Homo sapiens (Human)*

Instruction manual

FOR RESEARCH USE ONLY

NOT FOR USE IN CLINICAL DIAGNOSTIC PROCEDURES

13th Edition (Revised in Aug, 2023)

[PROPERTIES]

Source: Prokaryotic expression

Host: *E.coli*

Residues: Gly1059~Leu1466

Tags: N-terminal His Tag

Subcellular Location: Extracellular matrix

Purity: > 90%

Traits: Freeze-dried powder

Buffer formulation: PBS, pH7.4, containing 0.01% Sarcosyl, 5% Trehalose.

Original Concentration: 1500µg/mL

Applications: Positive Control; Immunogen; SDS-PAGE; WB.

(May be suitable for use in other assays to be determined by the end user.)

Predicted isoelectric point: 6.0

Predicted Molecular Mass: 45.8kDa

Accurate Molecular Mass: 47kDa as determined by SDS-PAGE reducing conditions.

[USAGE]

Reconstitute in 10mM PBS (pH7.4) to a concentration of 0.1-1.0 mg/mL. Do not vortex.

[STORAGE AND STABILITY]

Storage: Avoid repeated freeze/thaw cycles.

Store at 2-8°C for one month.

Aliquot and store at -80°C for 12 months.

Stability Test: The thermal stability is described by the loss rate. The loss rate was determined by accelerated thermal degradation test, that is, incubate the protein at 37°C for 48h, and no obvious degradation and precipitation were observed. The loss rate is less than 5% within the expiration date under appropriate storage condition.

[SEQUENCE]

```

GK  SDRGESGPA  GPAGAPGAG  SRGAPGPQGP  RGDKGETGER
GAAGIKGHRG  FPGNPGAPGS  PGPAGQQGAI  GSPGPAGPRG  PVGPSGPPGK
DGTSGHPGPI  GPPGPRGNRG  ERGSEGSPGH  PGQPGPPGPP  GAPGPCCGGV
GAAAIAGIGG  EKAGGFAPYY  GDEPMDFKIN  TDEIMTSLKS  VNGQIESLIS
PDGSRKNPAR  NCRDLKFCHP  ELKSGEYWVD  PNQGCKLDAI  KVFCNMETGE
TCISANPLNV  PRKHWTDSS  AEKHKVWFGE  SMDGGGFQFSY  GNPPELPEVL
DVHLAFLRLL  SSRASQNITY  HCKNSIAYMD  QASGNVKKAL  KLMGSNEGEF
KAEGNSKFTY  TVLEDGCTKH  TGEWSKTVFE  YRTRKAVRLP  IVDIAPYDIG
GPDQEFQVDV  GPVCFL
    
```

[IDENTIFICATION]

GGATTCGGAAAGAGTGGTGACAGAGGAGAAAGTGGCCCTGCTGGCCCTGCTGGTCTCCCGGTTCTCTGCTGGTTCCCGAGGTGCTCCTGGTCTCAAAGGCCACCGTGGTGACAAAAGTGAAACAGGTGAACGTGGAGCTGCTGGCATCAAAGGACATCGAGGATTCCCTGGTAATCCAGG

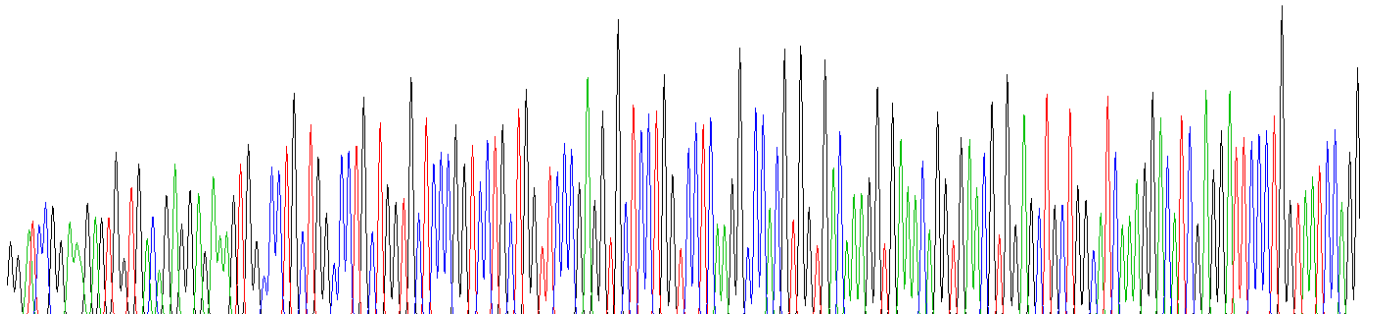


Figure . Gene Sequencing (extract)

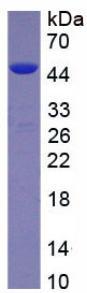


Figure. SDS-PAGE

[IMPORTANT NOTE]

The kit is designed for research use only, we will not be responsible for any issue if the kit was used in clinical diagnostic or any other procedures.