

RPB969Hu02 200µg
Recombinant Complement Component 5 (C5)
Organism Species: *Homo sapiens* (Human)
Instruction manual

FOR RESEARCH USE ONLY
NOT FOR USE IN CLINICAL DIAGNOSTIC PROCEDURES

12th Edition (Revised in Aug, 2016)

[PROPERTIES]

Source: Prokaryotic expression

Host: *E.coli*

Residues: Ser1055~Asn1513

Tags: N-terminal His Tag

Subcellular Location: Secreted

Purity: > 95%

Traits: Freeze-dried powder

Buffer formulation: PBS, pH7.4, containing 0.01% SKL, 5% Trehalose.

Original Concentration: 200µg/mL

Applications: Positive Control; Immunogen; SDS-PAGE; WB.

(May be suitable for use in other assays to be determined by the end user.)

Predicted isoelectric point: 6.4

Predicted Molecular Mass: 55.2kDa

Accurate Molecular Mass: 55kDa as determined by SDS-PAGE reducing conditions.

[USAGE]

Reconstitute in 10mM PBS (pH7.4) to a concentration of 0.1-1.0 mg/mL. Do not vortex.

[STORAGE AND STABILITY]

Storage: Avoid repeated freeze/thaw cycles.

Store at 2-8°C for one month.

Aliquot and store at -80°C for 12 months.

Stability Test: The thermal stability is described by the loss rate. The loss rate was determined by accelerated thermal degradation test, that is, incubate the protein at 37°C for 48h, and no obvious degradation and precipitation were observed. The loss rate is less than 5% within the expiration date under appropriate storage condition.

[SEQUENCE]

SIMSYR NADYSYSVWK GGSASTWLTA FALRVLGQVN KYVEQNQNSI
CNSLLWLVEN YQLDNGSFKE NSQYQPIKLQ GTLPVEAREN SLYLTAFTVI
GIRKAFDIPC LVKIDTALIK ADNFLENTL PAQSTFTLAI SAYALSLGDK
THPQFRSIVS ALKREALVKG NPPIYRFWKD NLQHKDSSVP NTGTARMVET
TAYALLTSLN LKDINYVNPV IKWLSEEQRY GGGFYSTQDT INAIEGLTEY
SLLVKQLRLS MDIDVSYKHK GALHNYKMTD KNFLGRPVEV LLNDDLIVST
GFGSGLATVH VTTVVHKTST SEEVCSFYLK IDTQDIEASH YRGYGNSDYK
RIVACASYKP SREESSSGSS HAVMDISLPT GISANEEDLK ALVEGVDQLF
TDYQIKDGHV ILQLNSIPSS DFLCVRFRIF ELFEVGFLSP ATFTVYEHYR
PDKQCTMFYS TSN

[IDENTIFICATION]

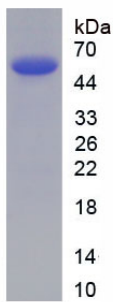


Figure. SDS-PAGE

[IMPORTANT NOTE]

The kit is designed for research use only, we will not be responsible for any issue if the kit was used in clinical diagnostic or any other procedures.