

RPA835Mu02 100µg
Recombinant Corticotropin Releasing Hormone (CRH)
Organism Species: *Mus musculus* (Mouse)
Instruction manual

FOR IN VITRO USE AND RESEARCH USE ONLY
NOT FOR USE IN CLINICAL DIAGNOSTIC PROCEDURES

12th Edition (Revised in Aug, 2016)

[**PROPERTIES**]

Source: Prokaryotic expression.

Host: *E. coli*

Residues: Arg28~Arg160

Tags: Two N-terminal Tags, His-tag and GST-tag

Tissue Specificity: Brain.

Subcellular Location: Secreted.

Purity: >95%

Traits: Freeze-dried powder

Buffer formulation: 20mM Tris, 150mM NaCl, pH8.0, containing 1mM EDTA, 1mM DTT, 0.01% sarcosyl, 5%Trehalose and Proclin300.

Original Concentration: 200ug/mL

Applications: SDS-PAGE; WB; ELISA; IP; CoIP; Purification; Amine Reactive Labeling.

(May be suitable for use in other assays to be determined by the end user.)

Predicted isoelectric point: 7.3

Predicted Molecular Mass: 44.8kDa

Accurate Molecular Mass: 46kDa as determined by SDS-PAGE reducing conditions.

[**USAGE**]

Reconstitute in 20mM Tris, 150mM NaCl (pH8.0) to a concentration of 0.1-1.0 mg/mL. Do not vortex.

[**STORAGE AND STABILITY**]

Storage: Avoid repeated freeze/thaw cycles.

Store at 2-8°C for one month.

Aliquot and store at -80°C for 12 months.

Stability Test: The thermal stability is described by the loss rate. The loss rate was determined by accelerated thermal degradation test, that is, incubate the protein at 37°C for 48h, and no obvious degradation and precipitation were observed. The loss rate is less than 5% within the expiration date under appropriate storage condition.

[SEQUENCE]

```
                RGS VPRAPRAPQP LNFLQPEQPQ
QPQPVLIRMG EEYFLRLGNL NRSPAARLSP NSTPLTAGRG SRPSHDQAAA
NFFRVLLQQL QMPQRSLSR AEPAERGAED ALGGHQGALE RERRSEEPPI
SLDLTFHLLR
```

[IDENTIFICATION]

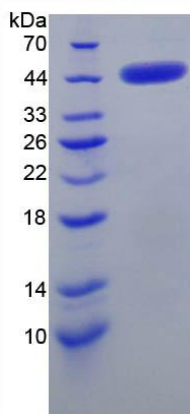


Figure 1. SDS-PAGE