

RPF303Hu01 50µg

Recombinant Cytokine Receptor Like Factor 1 (CRLF1)

Organism Species: *Homo sapiens (Human)*

Instruction manual

FOR RESEARCH USE ONLY

NOT FOR USE IN CLINICAL DIAGNOSTIC PROCEDURES

13th Edition (Revised in Aug, 2023)

[PROPERTIES]

Source: Prokaryotic expression

Host: *E.coli*

Residues: Pro138~Arg422

Tags: N-terminal His and GST Tag

Subcellular Location: Secreted

Purity: > 95%

Traits: Freeze-dried powder

Buffer formulation: 20mM Tris, 150mM NaCl, pH8.0, containing 1mM EDTA, 1mM DTT, 0.01% Sarcosyl, 5% Trehalose and Proclin300.

Original Concentration: 50µg/mL

Applications: Positive Control; Immunogen; SDS-PAGE; WB.

(May be suitable for use in other assays to be determined by the end user.)

Predicted isoelectric point: 9.2

Predicted Molecular Mass: 62.2kDa

Accurate Molecular Mass: 62kDa as determined by SDS-PAGE reducing conditions.

[USAGE]

Reconstitute in ddH₂O to a concentration less than or equal to 0.1mg/mL. Do not vortex.

[STORAGE AND STABILITY]

Storage: Avoid repeated freeze/thaw cycles.

Store at 2-8°C for one month.

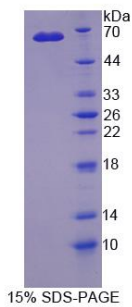
Aliquot and store at -80°C for 12 months.

Stability Test: The thermal stability is described by the loss rate. The loss rate was determined by accelerated thermal degradation test, that is, incubate the protein at 37°C for 48h, and no obvious degradation and precipitation were observed. The loss rate is less than 5% within the expiration date under appropriate storage condition.

[SEQUENCE]

PVN ISCWSKNMKD
LTCRWTPGAH GETFLHTNYS LKYKLRWYGQ DNTCEEYHTV GPHSCHIPKD
LALFTPYEIW VEATNRLGSA RSDVLTLDIL DVVTTDPPPD VHVS RVGGLE
DQLSVRWVSP PALKDFLFQA KYQIRYRVED SVDWKVVDDV SNQTSCRLAG
LKP GTVYFVQ VRCNPFGIYG SKKAGIWSEW SHPTAASTPR SERPGPGGGA
CEPRGGEPSS GPVRRRLKQF LGWLKKHAYC SNLSFRLYDQ WRAWMQKSHK
TRNQDEGILP SGRRTARGP AR

[IDENTIFICATION]



[IMPORTANT NOTE]

The kit is designed for research use only, we will not be responsible for any issue if the kit was used in clinical diagnostic or any other procedures.