

RPJ251Hu01 200µg

Recombinant Deleted In Malignant Brain Tumors 1 (DMBT1)

Organism Species: *Homo sapiens (Human)*

Instruction manual

FOR RESEARCH USE ONLY

NOT FOR USE IN CLINICAL DIAGNOSTIC PROCEDURES

13th Edition (Revised in Aug, 2023)

[PROPERTIES]

Source: Prokaryotic expression

Host: *E.coli*

Residues: Cys2008~Arg2413

Tags: N-terminal His Tag

Subcellular Location: Secreted

Purity: > 80%

Traits: Freeze-dried powder

Buffer formulation: PBS, pH7.4, containing 0.01% Sarcosyl, 5% Trehalose.

Original Concentration: 50µg/mL

Applications: Positive Control; Immunogen; SDS-PAGE; WB.

(May be suitable for use in other assays to be determined by the end user.)

Predicted isoelectric point: 6.7

Predicted Molecular Mass: 49.9kDa

Accurate Molecular Mass: 50kDa as determined by SDS-PAGE reducing conditions.

[USAGE]

Reconstitute in ddH₂O to a concentration of 0.1-0.2 mg/mL. Do not vortex.

[STORAGE AND STABILITY]

Storage: Avoid repeated freeze/thaw cycles.

Store at 2-8°C for one month.

Aliquot and store at -80°C for 12 months.

Stability Test: The thermal stability is described by the loss rate. The loss rate was determined by accelerated thermal degradation test, that is, incubate the protein at 37°C for 48h, and no obvious degradation and precipitation were observed. The loss rate is less than 5% within the expiration date under appropriate storage condition.

[SEQUENCE]

CGG	FLSQPSGDFS	SPFYPGNYPN	NAKCVWDIEV	QNNYRVTVIF
RDVQLEGGCN	YDYIEVFDGP	YRSSPLIARV	CDGARGSFTS	SSNFMSIRFI
SDHSITRRGF	RAEYSSPSN	DSTNLLCLPN	HMQASVRSY	LQSLGFSASD
LVISTWNGYY	ECRPQITPNL	VIFTIPYSGC	GTFKQADNDT	IDYSNFLTAA
VSGGIIKRR	DLRIHVSCRM	LQNTWVDTMY	IANDTIHVAN	NTIQVEEVQY
GNFDVNISFY	TSSSFLYPVT	SRPYVVDLNQ	DLYVQAEILH	SDAVLTLFVD
TCVASPYSND	FTSLTYDLIR	SGCVRDDTYG	PYSSPSLRIA	RFRFRAFHFL
NRFPSVYLRC	KMVVCRAYDP	SSRCYRGCVL	RSKRVDVGSYQ	EKVDVVLGPI
QLQTPPRREE	EPR			

[IDENTIFICATION]

TGTGGCGGTTTTCTGAGCCAGCCGAGCGGCGATTTTAGCAGTCGGTTTATTCGGGTAATTATCCGAAATAAGCAAAATGCTTTGGGATTTTGAAGGTTTTCAGAAATTAATTCGGTTTCCGATTTTTTCGGATGTTCTAGCTGGAAGGTTGGTTCGAATTAATGATTATTTGAAGTTTTTCGACGG
 C G G F L S Q P S G D F S S P F Y P G N Y P N N A K C V W D I E V Q N N Y R V T V I F R D V Q L E G G C N Y D Y I E V F D G

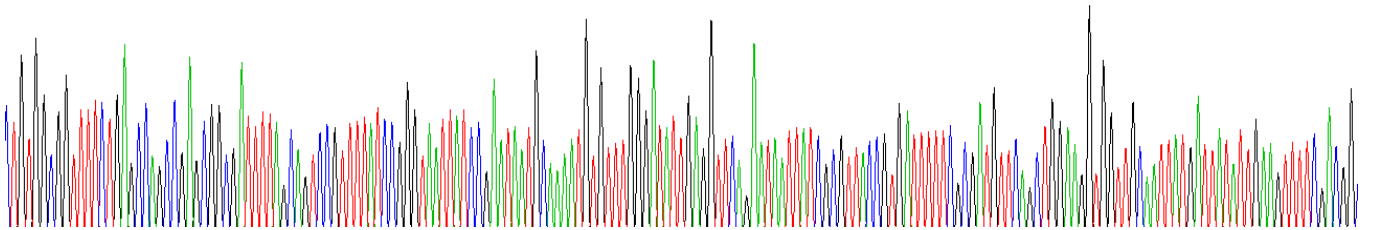


Figure. Gene Sequencing (Extract)

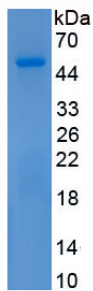


Figure. SDS-PAGE

[IMPORTANT NOTE]

The kit is designed for research use only, we will not be responsible for any issue if the kit was used in clinical diagnostic or any other procedures.