

RPJ256Hu01 200µg

Recombinant Delta Like Protein 4 (dLL4)

Organism Species: *Homo sapiens (Human)*

Instruction manual

FOR RESEARCH USE ONLY

NOT FOR USE IN CLINICAL DIAGNOSTIC PROCEDURES

13th Edition (Revised in Aug, 2023)

[PROPERTIES]

Source: Prokaryotic expression

Host: *E.coli*

Residues: Val173~Glu518

Tags: N-terminal His and GST Tag

Subcellular Location: Membrane

Purity: > 80%

Traits: Freeze-dried powder

Buffer formulation: PBS, pH7.4, containing 0.01% SKL, 5% Trehalose .

Original Concentration: 50µg/mL

Applications: Positive Control; Immunogen; SDS-PAGE; WB.

(May be suitable for use in other assays to be determined by the end user.)

Predicted isoelectric point: 6.0

Predicted Molecular Mass: 67.7kDa

Accurate Molecular Mass: 68&55kDa as determined by SDS-PAGE reducing conditions.

[USAGE]

Reconstitute in ddH₂O to a concentration of 0.1-0.5 mg/mL. Do not vortex.

[STORAGE AND STABILITY]

Storage: Avoid repeated freeze/thaw cycles.

Store at 2-8°C for one month.

Aliquot and store at -80°C for 12 months.

Stability Test: The thermal stability is described by the loss rate. The loss rate was determined by accelerated thermal degradation test, that is, incubate the protein at 37°C for 48h, and no obvious degradation and precipitation were observed. The loss rate is less than 5% within the expiration date under appropriate storage condition.

[SEQUENCE]

VICSDNYY GDNCSRLCKK RNDHFGHYVC
QPDGNLSCLP GWTGEYCQQP ICLSGCHEQN GYCSKPAECL CRPGWQGRLC
NECIPHNGCR HGTCSTPWQC TCDEGWGGLF CDQDLNYCTH HSPCKNGATC
SNSGQRSYTC TCRPGYTGVD CELELSECDS NPCRNGGSCK DQEDGYHCLC
PPGYYYGLHCE HSTLSCADSP CFNGGSCRER NQGANYACEC PPNFTGSNCE
KKVDRCTSNP CANGGQCLNR GPSRMCRCRP GFTGTYCELH VSDCARNPCA
HGGTCHDLEN GLMCTCPAGF SGRRCVVRTS IDACASSPCF NRATCYDLS
TDTFVCNCPY GFVGSRCE

[IDENTIFICATION]

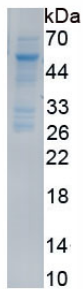


Figure. SDS-PAGE

[IMPORTANT NOTE]

The kit is designed for research use only, we will not be responsible for any issue if the kit was used in clinical diagnostic or any other procedures.