

RPQ268Hu01 50µg

Recombinant EGF Like Domain Protein, Multiple 6 (EGFL6)

Organism Species: *Homo sapiens (Human)*

Instruction manual

FOR RESEARCH USE ONLY

NOT FOR USE IN CLINICAL DIAGNOSTIC PROCEDURES

13th Edition (Revised in Aug, 2023)

[PROPERTIES]

Source: Prokaryotic expression

Host: *E.coli*

Residues: Asn22~Asp553

Tags: N-terminal His Tag

Subcellular Location: Membrane, Secreted, Extracellular matrix

Purity: > 80%

Traits: Freeze-dried powder

Buffer formulation: PBS, pH7.4, containing 0.01% Sarcosyl, 5% Trehalose.

Original Concentration: 50µg/mL

Applications: Positive Control; Immunogen; SDS-PAGE; WB.

(May be suitable for use in other assays to be determined by the end user.)

Predicted isoelectric point: 8.1

Predicted Molecular Mass: 62.8kDa

Accurate Molecular Mass: 63kDa as determined by SDS-PAGE reducing conditions.

[USAGE]

Reconstitute in ddH₂O to a concentration of 0.1-0.2 mg/mL. Do not vortex.

[STORAGE AND STABILITY]

Storage: Avoid repeated freeze/thaw cycles.

Store at 2-8°C for one month.

Aliquot and store at -80°C for 12 months.

Stability Test: The thermal stability is described by the loss rate. The loss rate was determined by accelerated thermal degradation test, that is, incubate the protein at 37°C for 48h, and no obvious degradation and precipitation were observed. The loss rate is less than 5% within the expiration date under appropriate storage condition.

[SEQUENCE]

NAASARHHGL	LASARQPGVC	HYGTKLACCY	GWRRNNSKGVC	EATCEPGCKF	GECVGPNKCR
CFPGYTGKTC	SQDVNECGMK	PRPCQHRCVN	THGSYKCFCL	SGHMLMPDAT	CVNSRTCAMI
NCQYSCEDTE	EGPQCLCPSS	GLRLAPNGRD	CLDIDECASG	KVICPYNRRC	VNTFGSYYCK
CHIGFELQYI	SGRYDCIDIN	ECTMDSHTCS	HHANCFNTQG	SFKCKCKQGY	KGNGLRCSAI
PENSVEVLR	APGTIKDRIK	KLLAHKNSMK	KKAKIKNVTP	EPTRTPPKV	NLQPFNYEEI
VSRGGNSHGG	KKGNEEKMKE	GLEDEKREEK	ALKNDIEERS	LRGDVFFPKV	NEAGEFGLIL
VQRKALTSKL	EHKDLNISVD	CSFNHGICDW	KQDREDDFDW	NPADRDNAIG	FYMAVPALAG
HKKDIGRLKL	LLPDLQPQSN	FCLLFDYRLA	GDKVGKLRVF	VKNSNNALAW	EKTTSEDEKW
KTGKIQLYQG	TDATKSIIFE	AERGKGKTGE	IAVDGVLLVS	GLCPDSLSSV	DD

[IDENTIFICATION]

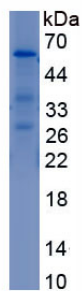


Figure. SDS-PAGE

[IMPORTANT NOTE]

The kit is designed for research use only, we will not be responsible for any issue if the kit was used in clinical diagnostic or any other procedures.