

RPB154Bo01 200µg

Recombinant Fibrinogen Alpha Chain (FGA)

Organism Species: *Bos taurus*; Bovine (Cattle)

Instruction manual

FOR RESEARCH USE ONLY

NOT FOR USE IN CLINICAL DIAGNOSTIC PROCEDURES

13th Edition (Revised in Aug, 2023)

[PROPERTIES]

Source: Prokaryotic expression

Host: *E.coli*

Residues: Gly39~Pro615

Tags: N-terminal His Tag

Subcellular Location: Secreted

Purity: > 90%

Traits: Freeze-dried powder

Buffer formulation: PBS, pH7.4, containing 0.01% Sarcosyl, 5% Trehalose.

Original Concentration: 120µg/mL

Applications: Positive Control; Immunogen; SDS-PAGE; WB.

(May be suitable for use in other assays to be determined by the end user.)

Predicted isoelectric point: 7.7

Predicted Molecular Mass: 66.8KDa

Accurate Molecular Mass: 67kDa as determined by SDS-PAGE reducing conditions.

[USAGE]

Reconstitute in 10mM PBS (pH7.4) to a concentration of 0.1-1.0 mg/mL. Do not vortex.

[STORAGE AND STABILITY]

Storage: Avoid repeated freeze/thaw cycles.

Store at 2-8°C for one month.

Aliquot and store at -80°C for 12 months.

Stability Test: The thermal stability is described by the loss rate. The loss rate was determined by accelerated thermal degradation test, that is, incubate the protein at 37°C for 48h, and no obvious degradation and precipitation were observed. The loss rate is less than 5% within the expiration date under appropriate storage condition.

[SEQUENCE]

GP RLVERQQSAC
 KETGWPFCS D EDWNTKCPSG CRMKGLIDEV DQDFTSRINK LRDSL FNYQK
 NSKDSNTLTK NIVELMRGDF AKANNNDNTF KQISEDLSR IEILRRKVIE
 QVQRIKVLQK NVRDQLVDMK RLEVDIDIKI RSCKGSCSRA LEHKVDLEDY
 KNQQKQLEQV IAINLLPSRD IQYLPLIKMS TITGPVPREF KSQLQEAPLE
 WKALLEMQQT KMVLETFGGD GHARGDSVSQ GTGLAPGSPR KPGTSSIGNV
 NPGSYGPGSS GTWNPGRPEP GSAGTWNPGR PEPGSAGTWN PGRPEPGSAG
 TWNPGRPEPG SAGTWNPGRP EPGSAGTWNT GSSGSSSFRP DSSGHGNIRP
 SSPDWGTFRE EGSVSSGTKQ EFHTGKLVTT KGDKELLIDN EKVTSGHTTT
 TRRSCSKVIT KTVTNADGRT ETTKEVVKSE DGSDCGDADF DWHHTFPSRG
 NLDDFFHRDK DDFFTRSSHE FDGRTGLAPE FAALGESGSS SSKTSTHSKQ
 FVSSSTTVNR GGS AIESKHF KMEDEAESLE DLGFKGAHGT QKGHTKARPA
 RGIHTSPLGE PSLTP

[IDENTIFICATION]

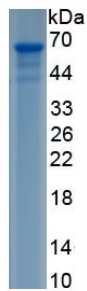


Figure. SDS-PAGE

[IMPORTANT NOTE]

The kit is designed for research use only, we will not be responsible for any issue if the kit was used in clinical diagnostic or any other procedures.