

**RPA746Mu01 200µg**  
**Recombinant Fibroblast Growth Factor 23 (FGF23)**  
**Organism Species: *Mus musculus* (Mouse)**  
***Instruction manual***

FOR RESEARCH USE ONLY  
NOT FOR USE IN CLINICAL DIAGNOSTIC PROCEDURES

---

13th Edition (Revised in Aug, 2023)

**[ PROPERTIES ]**

**Source:** Prokaryotic expression

**Host:** *E.coli*

**Residues:** Tyr25~Val251

**Tags:** His and TrxA Tag

**Subcellular Location:** Secreted

**Purity:** > 95%

**Traits:** Freeze-dried powder

**Buffer formulation:** PBS, pH7.4, containing 0.01% Sarcosyl, 5% Trehalose.

**Original Concentration:** 2500µg/mL

**Applications:** Positive Control; Immunogen; SDS-PAGE; WB.

(May be suitable for use in other assays to be determined by the end user.)

**Predicted isoelectric point:** 9.8

**Predicted Molecular Mass:** 45.7kDa

**Accurate Molecular Mass:** 42kDa as determined by SDS-PAGE reducing conditions.

**[ USAGE ]**

Reconstitute in 10mM PBS (pH7.4) to a concentration of 0.1-1.0 mg/mL. Do not vortex.

**[ STORAGE AND STABILITY ]**

**Storage:** Avoid repeated freeze/thaw cycles.

Store at 2-8°C for one month.

Aliquot and store at -80°C for 12 months.

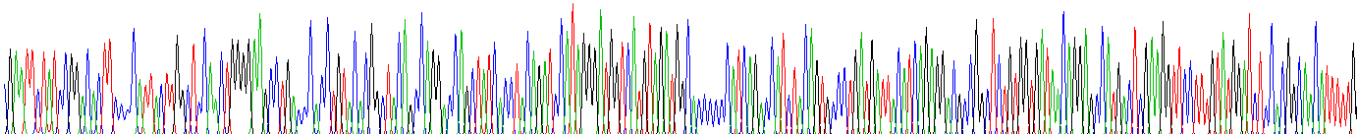
**Stability Test:** The thermal stability is described by the loss rate. The loss rate was determined by accelerated thermal degradation test, that is, incubate the protein at 37°C for 48h, and no obvious degradation and precipitation were observed. The loss rate is less than 5% within the expiration date under appropriate storage condition.

**[ SEQUENCE ]**

Y P D T S P L L G S N W G S L T H L Y T A T A R T S Y H L Q I H R D G H V D G T P H Q T I Y S A L M I T S E D A G S V V I T G A M T R R F L C M D L H G N I F G S L H F S P E N C  
K F R Q W T L E N G Y D V Y L S Q K H H Y L V S L G R A K R I F Q P G T N P P P F S Q F L A R R N E V P L L H F Y T V R P R R H T R S A E D P P E R D P L N V L K P R P R A T P V  
P V S C S R E L P S A E E G G P A A S D P L G V L R R G R G D A R G G A G G A D R C R P F P R F V

**[ IDENTIFICATION ]**

GAATCTATCCGGCTTCCCATATTCGGCTCAWCTGGGAGCTGGCCCTGACAGCTGGCCGGCCGACTATCCCTCCGATCCATGGGATGGCAGTCAAGCCGCCCATAGCCCATCTGAGCTCTCATGATCAGCGGACCTCCCTCTGGGGATACGGKTCATCTCGAGCTCTTGGATCTTCAGCTGCTCCGGACATTTTG



**Figure . Gene Sequencing (extract)**

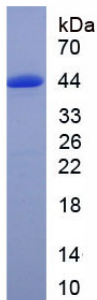


Figure. SDS-PAGE

**[ IMPORTANT NOTE ]**

The kit is designed for research use only, we will not be responsible for any issue if the kit was used in clinical diagnostic or any other procedures.