

RPF198Mu01 10µg

Recombinant Fucosyltransferase 8 (FUT8)

Organism Species: *Mus musculus* (Mouse)

Instruction manual

FOR RESEARCH USE ONLY

NOT FOR USE IN CLINICAL DIAGNOSTIC PROCEDURES

13th Edition (Revised in Aug, 2023)

[PROPERTIES]

Source: Prokaryotic expression

Host: *E.coli*

Residues: Lys206~Lys575

Tags: N-terminal His Tag

Subcellular Location: Membrane, Golgi apparatus

Purity: > 90%

Traits: Freeze-dried powder

Buffer formulation: 100mMNaHCO₃, 500mMNaCl, pH8.3, containing 1mM EDTA, 1mM DTT, 0.01% Sarcosyl, 5% Trehalose and Proclin300.

Original Concentration: 200µg/mL

Applications: Positive Control; Immunogen; SDS-PAGE; WB.

(May be suitable for use in other assays to be determined by the end user.)

Predicted isoelectric point: 6.8

Predicted Molecular Mass: 46.1kDa

Accurate Molecular Mass: 46kDa as determined by SDS-PAGE reducing conditions.

[USAGE]

Reconstitute in ddH₂O to a concentration of 0.1-1.0 mg/mL. Do not vortex.

[STORAGE AND STABILITY]

Storage: Avoid repeated freeze/thaw cycles.

Store at 2-8°C for one month.

Aliquot and store at -80°C for 12 months.

Stability Test: The thermal stability is described by the loss rate. The loss rate was determined by accelerated thermal degradation test, that is, incubate the protein at 37°C for 48h, and no obvious degradation and precipitation were observed. The loss rate is less than 5% within the expiration date under appropriate storage condition.

[SEQUENCE]

KARKL VCNINKGCGY GCQLHHVVYC FMIAYGTQRT LILESQNWRV
ATGGWETVFR PVSETCTDRS GLSTGHWSGE VNDKNIQVVE LPIVDSLHPR
PPYLPLAVPE DLADRLLRVH GDPAVWWSVQ FVKYLIRPQP WLEKEIEEAT
KKLGFKHPVI GVHVRRTDKV GTEAAFHPIE EYMHVVEEHF QLLARRMQVD
KRRVYLATDD PTLLEAKTK YSNYEFISDN SISWSAGLHN RYTENSLRGV
ILDIHFLSQA DFLVCTFSSQ VCRVAYEIMQ TLHPDASANF HSLDDIYYFG
GQNAHNQIAV YPHKPRTEEE IPMEPGDIIG VAGNHWDGYS KGINRKLKGT
GLYPSYKVRE KIETVKYPTY PEAEK

[IDENTIFICATION]

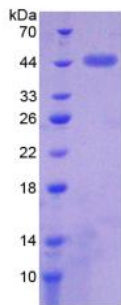


Figure. SDS-PAGE

[IMPORTANT NOTE]

The kit is designed for research use only, we will not be responsible for any issue if the kit was used in clinical diagnostic or any other procedures.