

**RPD761Mu01 50µg**

**Recombinant Glutamine synthetase (GS)**

**Organism Species: *Mus musculus* (Mouse)**

***Instruction manual***

FOR RESEARCH USE ONLY

NOT FOR USE IN CLINICAL DIAGNOSTIC PROCEDURES

---

13th Edition (Revised in Aug, 2023)

**[ PROPERTIES ]**

**Source:** Prokaryotic expression

**Host:** *E.coli*

**Residues:** Met1~Asn373

**Tags:** N-terminal His Tag

**Subcellular Location:** Mitochondrion, Cytoplasm

**Purity:** > 90%

**Traits:** Freeze-dried powder

**Buffer formulation:** 20mM Tris, 150mM NaCl, pH8.0, containing 0.01% Sarcosyl, 5%Trehalose.

**Original Concentration:** 200µg/mL

**Applications:** Positive Control; Immunogen; SDS-PAGE; WB.

(May be suitable for use in other assays to be determined by the end user.)

**Predicted isoelectric point:** 6.8

**Predicted Molecular Mass:** 44.3kDa

**Accurate Molecular Mass:** 44kDa as determined by SDS-PAGE reducing conditions.

**[ USAGE ]**

Reconstitute in 20mM Tris, 150mM NaCl (pH8.0) to a concentration of 0.1-1.0 mg/mL. Do not vortex.

**[ STORAGE AND STABILITY ]**

**Storage:** Avoid repeated freeze/thaw cycles.

Store at 2-8°C for one month.

Aliquot and store at -80°C for 12 months.

**Stability Test:** The thermal stability is described by the loss rate. The loss rate was determined by accelerated thermal degradation test, that is, incubate the protein at 37°C for 48h, and no obvious degradation and precipitation were observed. The loss rate is less than 5% within the expiration date under appropriate storage condition.

**[ SEQUENCE ]**

MATSASSHLN KGIKQMYMSL PQGEKVQAMY IWVDGTGEGE RCKTRTLDCE  
PKCVEELPEW NFDGSSTFQS EGSNSDMYLH PVAMFRDPFR KDPNKLVLCE  
VFKYNRKP AE TNLRHICKRI MDMVSNQHPW FGMEQEYTLM GTDGHPFGWP  
SNGFPGPQGP YYCGVGADKA YGRDIVEAHY RACLYAGVKI TGTNAEVMPA  
QWEFQIGPCE GIRMGDHLWI ARFILHRVCE DFGVIATFDP KPIPGNWNGA  
GCHTNFSTKA MREENGLKCI EEAIDKLSKR HQYHIRAYDP KGGLDNARRL  
TGFHETSNIN DFSAGVANRG ASIRIPRTVG QEKKGYFEDR RPSANCDPYA  
VTEAIVRTCL LNETGDEPFQ YKN

**[ IDENTIFICATION ]**

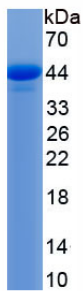


Figure. SDS-PAGE

**[ IMPORTANT NOTE ]**

The kit is designed for research use only, we will not be responsible for any issue if the kit was used in clinical diagnostic or any other procedures.