

RPC343Mu02 200µg
Recombinant Heat Shock 70kDa Protein 5 (HSPA5)
Organism Species: *Mus musculus* (Mouse)
Instruction manual

FOR RESEARCH USE ONLY
NOT FOR USE IN CLINICAL DIAGNOSTIC PROCEDURES

13th Edition (Revised in Aug, 2023)

[PROPERTIES]

Source: Prokaryotic expression

Host: *E.coli*

Residues: Glu20~Leu655

Tags: N-terminal GST Tag

Subcellular Location: Cytoplasm, Endoplasmic reticulum lumen

Purity: > 90%

Traits: Freeze-dried powder

Buffer formulation: PBS, pH7.4, containing 0.01% Sarcosyl, 5% Trehalose.

Original Concentration: 350µg/mL

Applications: Positive Control; Immunogen; SDS-PAGE; WB.

(May be suitable for use in other assays to be determined by the end user.)

Predicted isoelectric point: 4.7

Predicted Molecular Mass: 96.5kDa

Accurate Molecular Mass: 97kDa as determined by SDS-PAGE reducing conditions.

[USAGE]

Reconstitute in 10mM PBS (pH7.4) to a concentration of 0.1-1.0 mg/mL. Do not vortex.

[STORAGE AND STABILITY]

Storage: Avoid repeated freeze/thaw cycles.

Store at 2-8°C for one month.

Aliquot and store at -80°C for 12 months.

Stability Test: The thermal stability is described by the loss rate. The loss rate was determined by accelerated thermal degradation test, that is, incubate the protein at 37°C for 48h, and no obvious degradation and precipitation were observed. The loss rate is less than 5% within the expiration date under appropriate storage condition.

[SEQUENCE]

```

E EEDKKEDVGT VVGIDLGTTY SCVGVFKNGR
VEIIANDQGN RITPSYVAFT PEGERLIGDA AKNQLTSNPE NTVFDAKRLI
GRTWNDPSVQ QDIKFLPFKV VEKTKPYIQ VDIGGGQTKT FAPPEISAMV
LTKMKETAEA YLGKKVTHAV VTPPAYFNDA QRQATKDAGT IAGLNMRII
NEPTAAAIAY GLDKREGEKN ILVFDLGGGT FDSVLLTIDN GVFEVVATNG
DTHLGGEDFD QRVMEHFILK YKKKTGKDVR KDNRAVQKLR REVEKAKRAL
SSQHQAARIEI ESFFEGEDFS ETLTRAKFEE LNMDLFRSTM KPVQKVLEDS
DLKKSIDEI VLVGGSTRIP KIQQLVKEFF NGKEPSRGIN PDEAVAYGAA
VQAGVLSGDQ DTGDLVLLDV CPLTLGIETV GGVMTKLIPR NTVVPTKKSQ
IFSTASDNQP TVTIKVYEGE RPLTKDNHLL GTFDLTGIPP APRGVPQIEV
TFEIDVNGIL RVTAEDKGTG NKNKITITND QNRLTPEEIE RMVNDAEKFA
EEDKKLKERI DTRNELESYA YSLKNQIGDK EKLGGKLSSE DKETMEKAVE
EKIEWLESHQ DADIEDFKAK KKELEEIVQP IISKLYGSGG PPPTGEEDTS
EKDEL
    
```

[IDENTIFICATION]

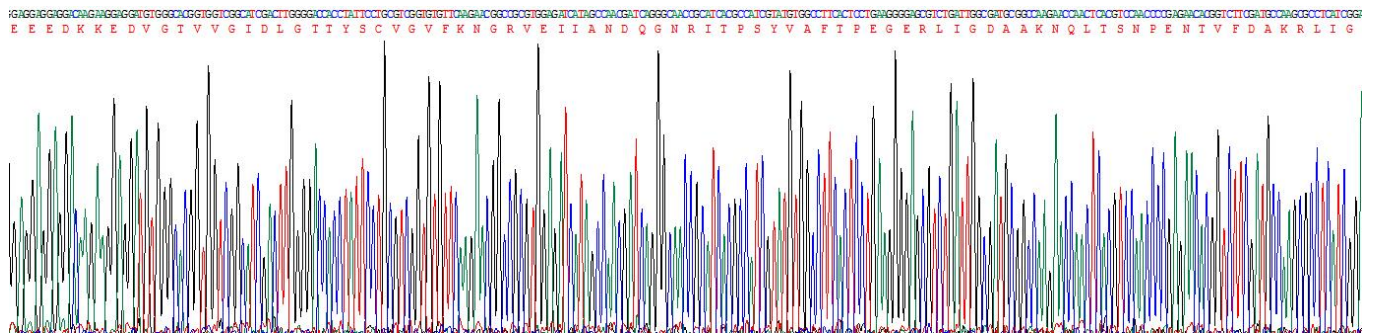


Figure. Gene Sequencing (Extract)

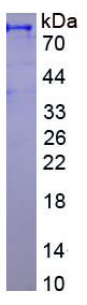


Figure. SDS-PAGE

[IMPORTANT NOTE]

The kit is designed for research use only, we will not be responsible for any issue if the kit was

used in clinical diagnostic or any other procedures.