

RPD522Hu01 10µg

Recombinant Heat Shock Protein 90kDa Alpha B1 (HSP90aB1)

Organism Species: *Homo sapiens (Human)*

Instruction manual

FOR RESEARCH USE ONLY

NOT FOR USE IN CLINICAL DIAGNOSTIC PROCEDURES

13th Edition (Revised in Aug, 2023)

[PROPERTIES]

Source: Prokaryotic expression

Host: *E.coli*

Residues: Met1~Asp724

Tags: N-terminal His Tag

Subcellular Location: Cytoplasm

Purity: > 90%

Traits: Freeze-dried powder

Buffer formulation: PBS, pH7.4, containing 0.01% Sarcosyl, 5% Trehalose.

Original Concentration: 50µg/mL

Applications: Positive Control; Immunogen; SDS-PAGE; WB.

(May be suitable for use in other assays to be determined by the end user.)

Predicted isoelectric point: 5.1

Predicted Molecular Mass: 80.9kDa

Accurate Molecular Mass: 81kDa as determined by SDS-PAGE reducing conditions.

[USAGE]

Reconstitute in ddH₂O to a concentration of 0.1-0.2 mg/mL. Do not vortex.

[STORAGE AND STABILITY]

Storage: Avoid repeated freeze/thaw cycles.

Store at 2-8°C for one month.

Aliquot and store at -80°C for 12 months.

Stability Test: The thermal stability is described by the loss rate. The loss rate was determined by accelerated thermal degradation test, that is, incubate the protein at 37°C for 48h, and no obvious degradation and precipitation were observed. The loss rate is less than 5% within the expiration date under appropriate storage condition.

[SEQUENCE]

```

MPEEVHHGEE EVETFAFQAE IAQLMSLIIN TFYSNKEIFL RELISNASDA
LDKIRYESLT DPSKLDGKE LKIDIIPNPQ ERTLTLVDTG IGMTKADLIN
NLGTIAKSGT KAFMEALQAG ADISMIGQFG VGFYSAYLVA EKVVVITKHN
DDEQYAWESS AGGSFTVRAD HGEPIGRGTK VILHLKEDQT EYLEERRVKE
VVKKHSQFIG YPITLYLEKE REKEISDDEA EEEKGEKEEE DKDDEEKPKI
EDVGSDEEDD SGKDKKKKTK KIKEKYIDQE ELNKTPIWT RNPDDITQEE
YGEFYKSLTN DWEDHLAVKH FSVEGQLEFR ALLFIPRRAP FDLFENKKK
NNIKLYVRRV FIMDSCDELI PEYLNFIIRGV VDSIDLPLNI SREMLQQSKI
LKVIRKNIVK KCLELFSELA EDKENYKKFY EAFSKNLKLG IHEDSTNRRR
LSELLRYHTS QSGDEMTSLS EYVSRMKETQ KSIYYITGES KEQVANSFV
ERVRKRGFEV VYMTEPIDEY CVQQLKEFDG KSLVSVTKEG LELPEDEEEK
KKMEESKAKF ENLCKLMKEI LDKKVEKVTI SNRLVSSPCC IVTSTYGWTA
NMERIMKAQA LRDNSTMGYM MAKKHLEINP DHPIVETLRQ KAEADKNDKA
VKDLVLLFE TALLSSGFSL EDPQTHSNRI YRMIKLG LGLI DEDEVAEEP
NAAVPDEIPP LEGDEDASRM EEVD
  
```

[IDENTIFICATION]

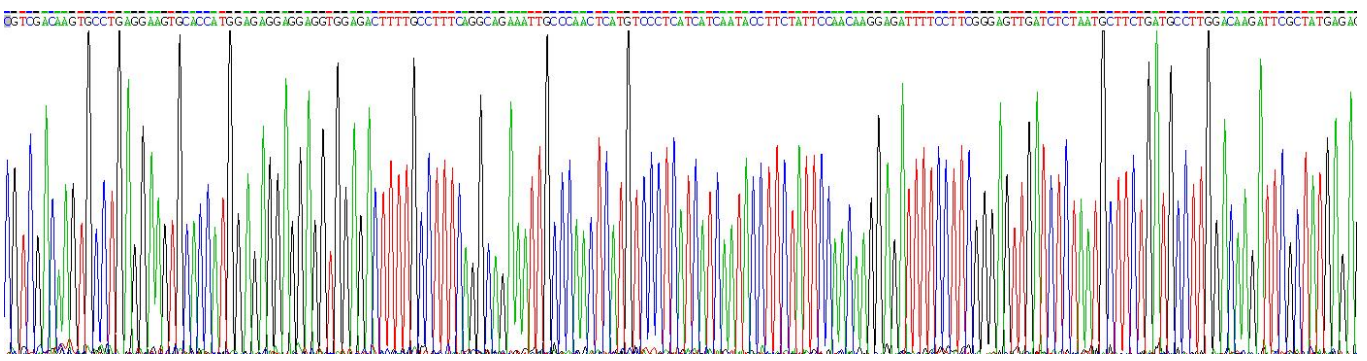


Figure . Gene Sequencing (extract)

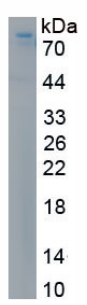


Figure. SDS-PAGE

[IMPORTANT NOTE]

The kit is designed for research use only, we will not be responsible for any issue if the kit was used in clinical diagnostic or any other procedures.