

RPE771Ra01 100µg

Recombinant Interleukin 11 Receptor Alpha (IL11Ra)

Organism Species: Rattus norvegicus (Rat)

Instruction manual

FOR IN VITRO USE AND RESEARCH USE ONLY

NOT FOR USE IN CLINICAL DIAGNOSTIC PROCEDURES

10th Edition (Revised in Jan, 2014)

[PROPERTIES]

Residues: Thr24~Ala371

Tags: Two N-terminal Tags, His-tag and T7-tag

Accession: Q99MF4

Host: *E. coli*

Subcellular Location: Cell membrane, Single-pass type I membrane protein.

Purity: >95%

Endotoxin Level: <1.0EU per 1µg
(determined by the LAL method).

Formulation: Supplied as lyophilized form in PBS, pH7.4, containing 5% trehalose, 0.01% sarcosyl.

Predicted isoelectric point: 6.1

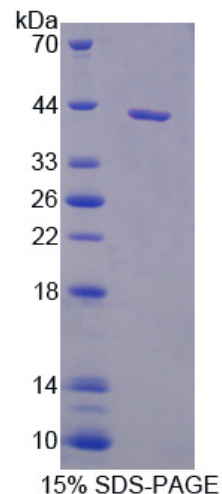
Predicted Molecular Mass: 41.9kDa

Applications: SDS-PAGE; WB; ELISA; IP.

(May be suitable for use in other assays to be determined by the end user.)

[USAGE]

Reconstitute in sterile PBS, pH7.2-pH7.4.



[STORAGE AND STABILITY]

Storage: Avoid repeated freeze/thaw cycles.

Store at 2-8°C for one month.

Aliquot and store at -80°C for 12 months.

Stability Test: The thermal stability is described by the loss rate of the target protein. The loss rate was determined by accelerated thermal degradation test, that is, incubate the protein at 37°C for 48h, and no obvious degradation and precipitation were observed. (Referring from China Biological Products Standard, which was calculated by the Arrhenius equation.) The loss of this protein is less than 5% within the expiration date under appropriate storage condition.

[SEQUENCES]

The sequence of the target protein is listed below.

TPCPQAW GPPGVQYGQP GRPVMLCCPG VNAGTPVSWF RDGDSRLLQG PDSGLGHRLV
LAQVDSRDEG TYVCRTL DGV FGGMVT LKLG SPPARPEVSC QAVDYENFSC
TWSPGRV SGL PTRYLTSYRK KTLPGAESQR ESPSTGPWPC PQDPLEASRC
VHGAEFWSE YRINVTEVNP LGASTCLLDV RLQRILRPDP PQGLRVESVP GYPRRLHASW
TYPASWRRQP HFL LKFR LQY RPAQH PAWST VEPIGLEELI TDAVAGLPHA VRVSARDFLD
AGTWSAWSPE AWGTPSTGPL RDEVPD GSRG HEQKLEAAAQ EDSPAPPSPS
LQDPRPLDH RDPLEQVAVLA