

RPD370Hu01 10µg

Recombinant Kruppel Like Factor 15 (KLF15)

Organism Species: *Homo sapiens (Human)*

Instruction manual

FOR RESEARCH USE ONLY

NOT FOR USE IN CLINICAL DIAGNOSTIC PROCEDURES

13th Edition (Revised in Aug, 2023)

[PROPERTIES]

Source: Prokaryotic expression

Host: *E.coli*

Residues: Met1~Arg364

Tags: N-terminal His Tag

Subcellular Location: Nucleus

Purity: > 95%

Traits: Freeze-dried powder

Buffer formulation: PBS, pH7.4, containing 0.01% Sarcosyl, 5% Trehalose.

Original Concentration: 100µg/mL

Applications: Positive Control; Immunogen; SDS-PAGE; WB.

(May be suitable for use in other assays to be determined by the end user.)

Predicted isoelectric point: 6.2

Predicted Molecular Mass: 41.6kDa

Accurate Molecular Mass: 44kDa as determined by SDS-PAGE reducing conditions.

[USAGE]

Reconstitute in ddH₂O to a concentration of 0.1-0.5 mg/mL. Do not vortex.

[STORAGE AND STABILITY]

Storage: Avoid repeated freeze/thaw cycles.

Store at 2-8°C for one month.

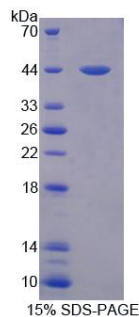
Aliquot and store at -80°C for 12 months.

Stability Test: The thermal stability is described by the loss rate. The loss rate was determined by accelerated thermal degradation test, that is, incubate the protein at 37°C for 48h, and no obvious degradation and precipitation were observed. The loss rate is less than 5% within the expiration date under appropriate storage condition.

[SEQUENCE]

MVDHLLPVDE NFSSPKCPVG YLGDRLVGRR AYHMLPSPVS EDDSDASSPC
 SCSSPDSQAL CSCYGGGLGT ESQDSILDFL LSQATLGSGG GSGSSIGASS
 GPVAWGPWRR AAAPVKGEHF CLPEFPLGDP DDVPRPFQPT LEEIEEFLEE
 NMEPGVKEVP EGNSKDLDAC SQLSAGPHKS HLHPGSSGRE RCSPPPGGAS
 AGGAQCGGG PTPDGPIPV LQIQPVVPVKQ ESGTGPASPG QAPENVKVAQ
 LLVNIQGQTF ALVPQVVPSS NLNLPSKFVR IAPVPAAKP VGSGPLGPGP
 AGLLMGQKFP KNPAAEIKM HKCTFPGCSK MYTKSSHLKA HLRRHTGEKP
 FACTWPGCGW RFSR

[IDENTIFICATION]



[IMPORTANT NOTE]

The kit is designed for research use only, we will not be responsible for any issue if the kit was used in clinical diagnostic or any other procedures.