

RPA386Ra01 50µg

Recombinant Lipoprotein lipase (LPL)

Organism Species: *Rattus norvegicus* (Rat)

Instruction manual

FOR RESEARCH USE ONLY

NOT FOR USE IN CLINICAL DIAGNOSTIC PROCEDURES

13th Edition (Revised in Aug, 2023)

[PROPERTIES]

Source: Prokaryotic expression

Host: *E.coli*

Residues: Ala28~Gly474

Tags: N-terminal His Tag

Subcellular Location: Membrane, Secreted

Purity: > 90%

Traits: Freeze-dried powder

Buffer formulation: PBS, pH7.4, containing 0.01% Sarcosyl, 5% Trehalose.

Original Concentration: 800µg/mL

Applications: Positive Control; Immunogen; SDS-PAGE; WB.

(May be suitable for use in other assays to be determined by the end user.)

Predicted isoelectric point: 8.2

Predicted Molecular Mass: 53.9kDa

Accurate Molecular Mass: 54kDa as determined by SDS-PAGE reducing conditions.

[USAGE]

Reconstitute in 10mM PBS (pH7.4) to a concentration of 0.1-1.0 mg/mL. Do not vortex.

[STORAGE AND STABILITY]

Storage: Avoid repeated freeze/thaw cycles.

Store at 2-8°C for one month.

Aliquot and store at -80°C for 12 months.

Stability Test: The thermal stability is described by the loss rate. The loss rate was determined by accelerated thermal degradation test, that is, incubate the protein at 37°C for 48h, and no obvious degradation and precipitation were observed. The loss rate is less than 5% within the expiration date under appropriate storage condition.

[SEQUENCE]

```
ADG GRDFSDIESK FALRTPEDA  
EDTCHLIPGL ADSVSNCHFN HSSKTFVVIH GWTVTGMYES WVPKLVAALY  
KREPSNVIV VDWLYRAQQH YPVSAGYTKL VGNDVARFIN WLEEEFNYP  
DNVHLLGYSL GAHAAGVAGS LTNKKVNRIT GLDPAGPNFE YAEAPSRLSP  
DDADFVDVLH TFTRGSPGRS IGIQKPVGHV DIYPNGGTFQ PGCNIGEAIR  
VIAEKGLGDV DQLVKCSHER SIHLFIDSL NEENPSKAYR CNSKEAFEKG  
LCLSCRKNRC NNVGYEINKV RAKRSSKMYL KTRSQMPYKV FHYQVKIHFS  
GTENDKQNNQ AFEISLYGTV AESENIPFTL PEVATNKTYS FLIYTEVDIG  
ELLMMKLKWK NDSYFRWSDW WSSPSFVIEK IRVKAGETQK KVIFCAREKV  
SHLQKGKDAV VFKCHKDLSL KKSG
```

[IDENTIFICATION]

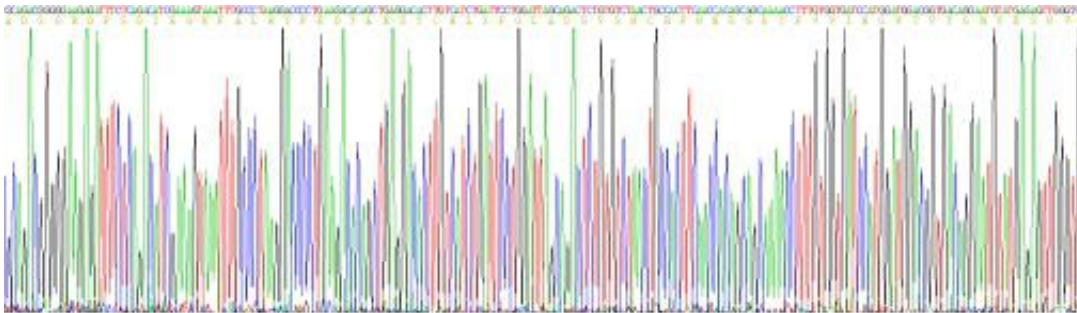


Figure . Gene Sequencing (extract)

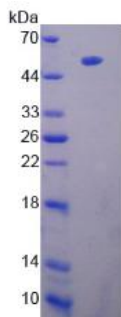


Figure. SDS-PAGE

[IMPORTANT NOTE]

The kit is designed for research use only, we will not be responsible for any issue if the kit was used in clinical diagnostic or any other procedures.