

**RPL730Hu01 200µg**

**Recombinant Microtubule Associated Monooxygenase, Calponin And LIM Domain**

**Containing Protein 2 (MICAL2)**

**Organism Species: *Homo sapiens (Human)***

***Instruction manual***

FOR RESEARCH USE ONLY

NOT FOR USE IN CLINICAL DIAGNOSTIC PROCEDURES

---

13th Edition (Revised in Aug, 2023)

**[ PROPERTIES ]**

**Source:** Prokaryotic expression

**Host:** *E.coli*

**Residues:** Met1~His495

**Tags:** N-terminal His Tag

**Subcellular Location:** Nucleus

**Purity:** > 80%

**Traits:** Freeze-dried powder

**Buffer formulation:** PBS, pH7.4, containing 0.01% Sarcosyl, 5% Trehalose.

**Original Concentration:** 150µg/mL

**Applications:** Positive Control; Immunogen; SDS-PAGE; WB.

(May be suitable for use in other assays to be determined by the end user.)

**Predicted isoelectric point:** 6.5

**Predicted Molecular Mass:** 60.2kDa

**Accurate Molecular Mass:** 60kDa as determined by SDS-PAGE reducing conditions.

**[ USAGE ]**

Reconstitute in 10mM PBS (pH7.4) to a concentration of 0.1-1.0 mg/mL. Do not vortex.

**[ STORAGE AND STABILITY ]**

**Storage:** Avoid repeated freeze/thaw cycles.

Store at 2-8°C for one month.

Aliquot and store at -80°C for 12 months.

**Stability Test:** The thermal stability is described by the loss rate. The loss rate was determined by accelerated thermal degradation test, that is, incubate the protein at 37°C for 48h, and no obvious degradation and precipitation were observed. The loss rate is less than 5% within the expiration date under appropriate storage condition.

**[ SEQUENCE ]**

MGENEDEKQA QAGQVFENFV QASTCKGTLQ AFNILTRHLD LDPLDHRNFY  
 SKLKSKVTTW KAKALWYKLD KRGSHKEYKR GKSCNTNKCL IVGGGPCGLR  
 TAIELAYLGA KVVVVEKRDS FSRNNVLHLW PFTIHDRGL GAKKFYKFC  
 AGSIDHISIR QLQLILFKVA LMLGVEIHVN VEFVKVLEPP EDQENQKIGW  
 RAEFLPTDHS LSEFEFDVII GADGRRNTLE GFRRKEFRGK LAIAITANFI  
 NRNSTAEAKV EEISGVAFIF NQKFFQDLKE ETGIDLENIV YYKDCTHYFV  
 MTAKKQSLLD KGVIINDYID TEMLLCAENV NQDNLLSYAR EAADFATNYQ  
 LPSLDFAMNH YGQPDVAMFD FTCMYASENA ALVRERQAHQ LLVALVGDSL  
 LEPFWPMGTG CARGFLAAFDF TAWMVKSWNQ GTPPELLAE RESLYRLLPQ  
 TTPENINKNF EQYTLDPGTR YPNLNSHCVR PHQVKHLYIT KELEH

**[ IDENTIFICATION ]**

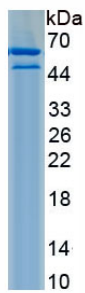


Figure. SDS-PAGE

**[ IMPORTANT NOTE ]**

The kit is designed for research use only, we will not be responsible for any issue if the kit was used in clinical diagnostic or any other procedures.