

RPB286Ra01 50µg

Recombinant Milk Fat Globule EGF Factor 8 (MFGE8)

Organism Species: *Rattus norvegicus* (Rat)

Instruction manual

FOR RESEARCH USE ONLY

NOT FOR USE IN CLINICAL DIAGNOSTIC PROCEDURES

13th Edition (Revised in Aug, 2023)

[PROPERTIES]

Source: Prokaryotic expression

Host: *E.coli*

Residues: Cys73~Arg421

Tags: N-terminal His and GST Tag

Subcellular Location: Membrane, Secreted

Purity: > 90%

Traits: Freeze-dried powder

Buffer formulation: 100mMNaHCO₃, 500mMNaCl, pH8.3, containing 0.01% SKL, 5% Trehalose.

Original Concentration: 200µg/mL

Applications: Positive Control; Immunogen; SDS-PAGE; WB.

(May be suitable for use in other assays to be determined by the end user.)

Predicted isoelectric point: 8.6

Predicted Molecular Mass: 69.4kDa

Accurate Molecular Mass: 69kDa as determined by SDS-PAGE reducing conditions.

[USAGE]

Reconstitute in ddH₂O to a concentration of 0.1-1.0 mg/mL. Do not vortex.

[STORAGE AND STABILITY]

Storage: Avoid repeated freeze/thaw cycles.

Store at 2-8°C for one month.

Aliquot and store at -80°C for 12 months.

Stability Test: The thermal stability is described by the loss rate. The loss rate was determined by accelerated thermal degradation test, that is, incubate the protein at 37°C for 48h, and no obvious degradation and precipitation were observed. The loss rate is less than 5% within the expiration date under appropriate storage condition.

[SEQUENCE]

		CFHDAKCL	VTEDTQRGDI	FTEYICQCPV
GYSGIHCELG	CSTKLGLEGG	AIADSQISAS	SVYMGFMGLQ	RWGPELARLY
RTGIVNAWTA	SSYDSKPWIQ	VDFLRKMRVS	GVMTQGASRA	GRAEYLKTFK
VAYSLDGRRF	EFIQDESGTG	DKEFMGNQDN	NSLKINMFNP	TLEAQYIRLY
PVSCHRGCTL	RFELLGCELH	GCSEPLGLKN	NTIPDSQITA	SSSYKTWNLR
AFGWYPHLGR	LDNQGKINAW	TAQSNSAKEW	LQVDLGTQKK	VTGIITQGAR
DFGHIQYVAS	YKVAHSDDGV	QWTVYEEQGT	SKVFQGNLDN	NSHKKNIFEK
PFMARYVRVL	PLSWHNRL	ITL R		

[IDENTIFICATION]

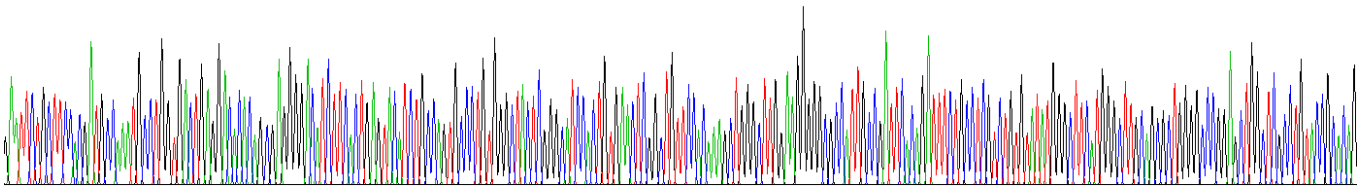
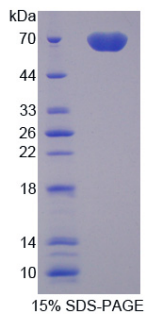


Figure . Gene Sequencing (extract)



[IMPORTANT NOTE]

The kit is designed for research use only, we will not be responsible for any issue if the kit was used in clinical diagnostic or any other procedures.