

**RPJ745Hu01 10µg**

**Recombinant MutS Homolog 2 (MSH2)**

**Organism Species: *Homo sapiens* (Human)**

***Instruction manual***

**FOR RESEARCH USE ONLY**

**NOT FOR USE IN CLINICAL DIAGNOSTIC PROCEDURES**

---

13th Edition (Revised in Aug, 2023)

## **[ PROPERTIES ]**

**Source:** Prokaryotic expression

**Host:** *E.coli*

**Residues:** Asn535~Thr934

**Tags:** N-terminal His Tag

**Subcellular Location:** Nucleus

**Purity:** > 90%

**Traits:** Freeze-dried powder

**Buffer formulation:** 100mMNaHCO<sub>3</sub>, 500mMNaCl, pH8.3, containing 0.01% Sarcosyl, 5% Trehalose.

**Original Concentration:** 150µg/mL

**Applications:** Positive Control; Immunogen; SDS-PAGE; WB.

(May be suitable for use in other assays to be determined by the end user.)

**Predicted isoelectric point:** 5.5

**Predicted Molecular Mass:** 47.7kDa

**Accurate Molecular Mass:** 48&16kDa as determined by SDS-PAGE reducing conditions.

## **[ USAGE ]**

Reconstitute in ddH<sub>2</sub>O to a concentration of 0.1-1.0 mg/mL. Do not vortex.

## **[ STORAGE AND STABILITY ]**

**Storage:** Avoid repeated freeze/thaw cycles.

Store at 2-8°C for one month.

Aliquot and store at -80°C for 12 months.

**Stability Test:** The thermal stability is described by the loss rate. The loss rate was determined by accelerated thermal degradation test, that is, incubate the protein at 37°C for 48h, and no obvious degradation and precipitation were observed. The loss rate is less than 5% within the expiration date under appropriate storage condition.

## **[ SEQUENCE ]**

```

NNKNFS TVDIQKNGVK
FTNSKLTSLN EEYTKNKTEY EEAQDAIVKE IVNISSGYVE PMQTLNDVLA
QLDAVVSFAG VSNGAPVPYV RPAILEKGQG RIILKASRHA CVEVQDEIAF
IPNDVYFEKD KQMFHIITGP NMGGKSTYIR QTGVIVLMAQ IGC FVPCESA
EVSIVDCILA RVGAGDSQLK GVSTFMAEML ETASILRSAT KDSLIIIDEL
GRGTSTYDGF GLAWAISEYI ATKIGAFCMF ATHFHELTAL ANQIPTVNNL
HVTALTTEET LTMLYQVKKG VCDQSFGIHV AELANFPKHV IEC AKQKALE
LEEFQYIGES QGYDIMEPAA KKCYLEREQG EKIIQEFLSK VKQMPFTEMS
EENITIKLKQ LKAEVIAKNN SFVNEIISRI KVT T

```

## [ IDENTIFICATION ]

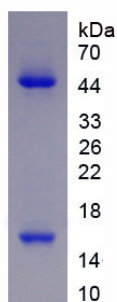


Figure. SDS-PAGE

## [ IMPORTANT NOTE ]

The kit is designed for research use only, we will not be responsible for any issue if the kit was used in clinical diagnostic or any other procedures.