

**RPE189Mu01 200µg**  
**Recombinant Proprotein Convertase Subtilisin/Kexin Type 9 (PCSK9)**  
**Organism Species: *Mus musculus* (Mouse)**  
***Instruction manual***

FOR RESEARCH USE ONLY  
NOT FOR USE IN CLINICAL DIAGNOSTIC PROCEDURES

---

13th Edition (Revised in Aug, 2023)

**[ PROPERTIES ]**

**Source:** Prokaryotic expression

**Host:** *E.coli*

**Residues:** Ser156~Gln694

**Tags:** N-terminal His and GST Tag

**Subcellular Location:** Cytoplasm

**Purity:** > 80%

**Traits:** Freeze-dried powder

**Buffer formulation:** PBS, pH7.4, containing 0.01% Sarcosyl, 5% Trehalose.

**Original Concentration:** 100µg/mL

**Applications:** Positive Control; Immunogen; SDS-PAGE; WB.

(May be suitable for use in other assays to be determined by the end user.)

**Predicted isoelectric point:** 7.5

**Predicted Molecular Mass:** 87.3kDa

**Accurate Molecular Mass:** 87kDa as determined by SDS-PAGE reducing conditions.

**[ USAGE ]**

Reconstitute in ddH<sub>2</sub>O to a concentration of 0.1-1.0 mg/mL. Do not vortex.

**[ STORAGE AND STABILITY ]**

**Storage:** Avoid repeated freeze/thaw cycles.

Store at 2-8°C for one month.

Aliquot and store at -80°C for 12 months.

**Stability Test:** The thermal stability is described by the loss rate. The loss rate was determined by accelerated thermal degradation test, that is, incubate the protein at 37°C for 48h, and no obvious degradation and precipitation were observed. The loss rate is less than 5% within the expiration date under appropriate storage condition.

**[ SEQUENCE ]**

TEEDRSPDGS	SQVEVYLLDT	SIQGAHREIE	GRVTITDFNS	VPEEDGTRFH	SIPWN LERIIPAWHQ
THLAGVVSGR	DAGVAKGTSL	HSLRVLNCQG	KGTVSGTLIG	LEFIRKSQLI	RQASKCDSHG
PLAGGYSRIL	NAACRHLART	GVVLVAAAGN	FRDDACLSP	ASAPEVITVG	QPSGPLVLL
LGTLGTNFGR	CVDLFAPGKD	IIGASSDCST	CFMSQSGTSQ	AAAHVAGIVA	ATNAQDQPVT
LAELRQLIH	FSTKDVINMA	WFPEDQQVLT	PMLVATLPPS	THETGGQLC	RMLSREPTLT
TRTATATARC	APEEELSCS	SFSRSGRRRG	DWIEAIGGQQ	VCKALNAFGG	RTVWSAHS GP
LVPRANCSIH	NTPAARAGLE	THVHCHQKDH	VLGCSFHWE	VEDLSVRRQP	EGVYAVARCC
CVGHQAASVY	ASCCHAPGLE	CKIKEHGIGS	PSEQVTVACE	AGWTLTGCNV	ALRSRRQPGQ
YSVDNLCVAR	VHDTARADRT	SGEATVAAAI	CCRSRPSAKA	SWVQ	

**[ IDENTIFICATION ]**

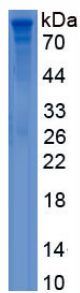


Figure. SDS-PAGE

**[ IMPORTANT NOTE ]**

The kit is designed for research use only, we will not be responsible for any issue if the kit was used in clinical diagnostic or any other procedures.