

**RPA679Mu01 50µg**

**Recombinant Protein Kinase, AMP Activated Alpha 1 (AMPK Alpha 1)**

**Organism Species: *Mus musculus* (Mouse)**

***Instruction manual***

FOR RESEARCH USE ONLY

NOT FOR USE IN CLINICAL DIAGNOSTIC PROCEDURES

---

13th Edition (Revised in Aug, 2023)

**[ PROPERTIES ]**

**Source:** Prokaryotic expression

**Host:** *E.coli*

**Residues:** Ile28~Lys257

**Tags:** N-terminal His Tag

**Subcellular Location:** Secreted

**Purity:** > 95%

**Traits:** Freeze-dried powder

**Buffer formulation:** PBS, pH7.4, containing 0.01% Sarcosyl, 5% Trehalose.

**Original Concentration:** 350µg/mL

**Applications:** Positive Control; Immunogen; SDS-PAGE; WB.

(May be suitable for use in other assays to be determined by the end user.)

**Predicted isoelectric point:** 8.5

**Predicted Molecular Mass:** 29.6kDa

**Accurate Molecular Mass:** 31kDa as determined by SDS-PAGE reducing conditions.

**[ USAGE ]**

Reconstitute in 10mM PBS (pH7.4) to a concentration of 0.1-1.0 mg/mL. Do not vortex.

**[ STORAGE AND STABILITY ]**

**Storage:** Avoid repeated freeze/thaw cycles.

Store at 2-8°C for one month.

Aliquot and store at -80°C for 12 months.

**Stability Test:** The thermal stability is described by the loss rate. The loss rate was determined by accelerated thermal degradation test, that is, incubate the protein at 37°C for 48h, and no obvious degradation and precipitation were observed. The loss rate is less than 5% within the expiration date under appropriate storage condition.

**[ SEQUENCE ]**

ILGDTLGVGTFGKVKVKGHELTGHKVAVKILNRQKIRSLDVVGKIRREIQNLKLFRRHPHIKLYQVISTPSDIFMVMYVSGGELFDYI  
 CKNGRLDEKESRRLFQQILSGVDYCHRHMVVHRDLKPENVLLDAHMNAKIADFGLSNMMSDGEFLRTSCGSPNYAAPEVISGRLYAGPE  
 VDIWSSGVILYALLCGTLPFDDDDHVPTLFKKICDGI FYTPQYLNPSVISLLK

**[ IDENTIFICATION ]**

ATTCTGGGTGACAGC TG999GTGGCACTTGGCAAAGTGAAGGTTGGCAACATGAATTGACTGGGCATAAAGTACCTGTGAAGATACTCAATCGACAGAGATTGGAGCCTTGATGTGTTAGGAAAAATCCAGAGAAATTCAGAACTCAAGCTTTTCAGGCATCTCATATAATTAAI  
 I L G D T L G V G T F G K V K V G K H E L T G H K V A V K I L N R Q K I R S L D V V G K I R R E I Q N L K L F R H P H I I K

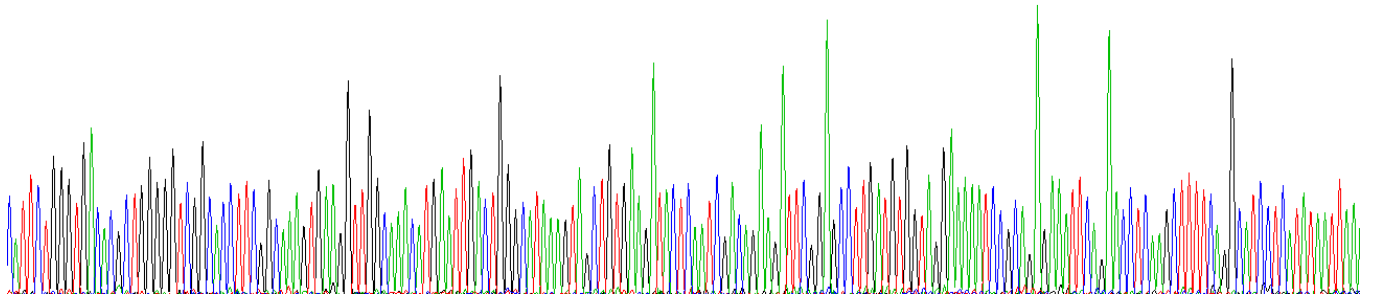


Figure . Gene Sequencing (extract)

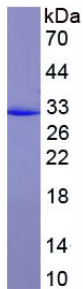


Figure. SDS-PAGE

**[ IMPORTANT NOTE ]**

The kit is designed for research use only, we will not be responsible for any issue if the kit was used in clinical diagnostic or any other procedures.