

RPH136Mu02 10µg

Recombinant Serine Palmitoyltransferase, Long Chain Base Subunit 3 (SPTLC3)

Organism Species: *Mus musculus* (Mouse)

Instruction manual

FOR RESEARCH USE ONLY

NOT FOR USE IN CLINICAL DIAGNOSTIC PROCEDURES

13th Edition (Revised in Aug, 2023)

[PROPERTIES]

Source: Prokaryotic expression

Host: *E.coli*

Residues: Arg80~Ala563

Tags: Two N-terminal Tags, His-tag and SUMO-tag

Subcellular Location: Membrane

Purity: > 90%

Traits: Freeze-dried powder

Buffer formulation: PBS, pH7.4, containing 0.01% Sarcosyl, 5% Trehalose.

Original Concentration: 200µg/mL

Applications: Positive Control; Immunogen; SDS-PAGE; WB.

(May be suitable for use in other assays to be determined by the end user.)

Predicted isoelectric point: 7.3

Predicted Molecular Mass: 68.4kDa

Accurate Molecular Mass: 68kDa as determined by SDS-PAGE reducing conditions.

[USAGE]

Reconstitute in ddH₂O to a concentration of 0.1-1.0 mg/mL. Do not vortex.

[STORAGE AND STABILITY]

Storage: Avoid repeated freeze/thaw cycles.

Store at 2-8°C for one month.

Aliquot and store at -80°C for 12 months.

Stability Test: The thermal stability is described by the loss rate. The loss rate was determined by accelerated thermal degradation test, that is, incubate the protein at 37°C for 48h, and no obvious degradation and precipitation were observed. The loss rate is less than 5% within the expiration date under appropriate storage condition.

[SEQUENCE]

R DFMRNWGIEK CNAEVEREEQ KDFVPLYQDF ENFYKRNL YM RIRDSWSHTV CSAPEPYMNV
 MEKVTD DYNW TFRHTGKVIE NIINMASYN Y LGLAGKYDDS MVRVKDTLEK YGVGVASTRN EMGTLDIHKE
 LEDLMAEFLN VEAVMSFGMG FATNAMNIPV FVGKGCLILS DEFNHTSVIL GSRLSGAVIR PFKHNNAENL
 EKLLREAIIR GQPGTGRAWK KILIVVEGVY SMEGSIVNLA QIVALKKKYK AYLYIDEAHS IGCTGPTGRG
 VRELFGLDPE DIDVYMGFTFT KSFSGSGGYI GKKKEIVDYL RMQSHSTTYA TSMSPVVAQ LIRSLKITMG
 YEGNIGGMER IQQLKENIKY FRRRLKEMGF IYGNDFSPV IPVLLYMPAK VSAFSRFLK KKISVVVVG
 PATSLPEGRA RFSMSSAHR EMLDTVLEV V DELGDLLNVK YFPLKKS GRA ILYNKEGFDN EASF EEMHSE
 PEA

[IDENTIFICATION]

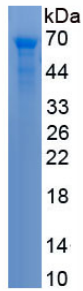


Figure. SDS-PAGE

[IMPORTANT NOTE]

The kit is designed for research use only, we will not be responsible for any issue if the kit was used in clinical diagnostic or any other procedures.