

**RPB162Mu01 50µg**

**Recombinant Thioredoxin-interacting Protein (TXNIP)**

**Organism Species: *Mus musculus* (Mouse)**

***Instruction manual***

FOR RESEARCH USE ONLY

NOT FOR USE IN CLINICAL DIAGNOSTIC PROCEDURES

---

13th Edition (Revised in Aug, 2023)

**[ PROPERTIES ]**

**Source:** Prokaryotic expression

**Host:** *E.coli*

**Residues:** Arg30~Glu381

**Tags:** N-terminal His and GST Tag

**Subcellular Location:** Cytoplasm

**Purity:** > 80%

**Traits:** Freeze-dried powder

**Buffer formulation:** 10mM HEPES, 150mM NaCl, 3mM EDTA, 0.05% Tween20 (pH 7.4), 5% Trehalose.

**Original Concentration:** 100µg/mL

**Applications:** Positive Control; Immunogen; SDS-PAGE; WB.

(May be suitable for use in other assays to be determined by the end user.)

**Predicted isoelectric point:** 6.5

**Predicted Molecular Mass:** 69.4kDa

**Accurate Molecular Mass:** 69kDa as determined by SDS-PAGE reducing conditions.

**[ USAGE ]**

Reconstitute in ddH<sub>2</sub>O to a concentration of 0.1-0.2 mg/mL. Do not vortex.

**[ STORAGE AND STABILITY ]**

**Storage:** Avoid repeated freeze/thaw cycles.

Store at 2-8°C for one month.

Aliquot and store at -80°C for 12 months.

**Stability Test:** The thermal stability is described by the loss rate. The loss rate was determined by accelerated thermal degradation test, that is, incubate the protein at 37°C for 48h, and no obvious degradation and precipitation were observed. The loss rate is less than 5% within the expiration date under appropriate storage condition.

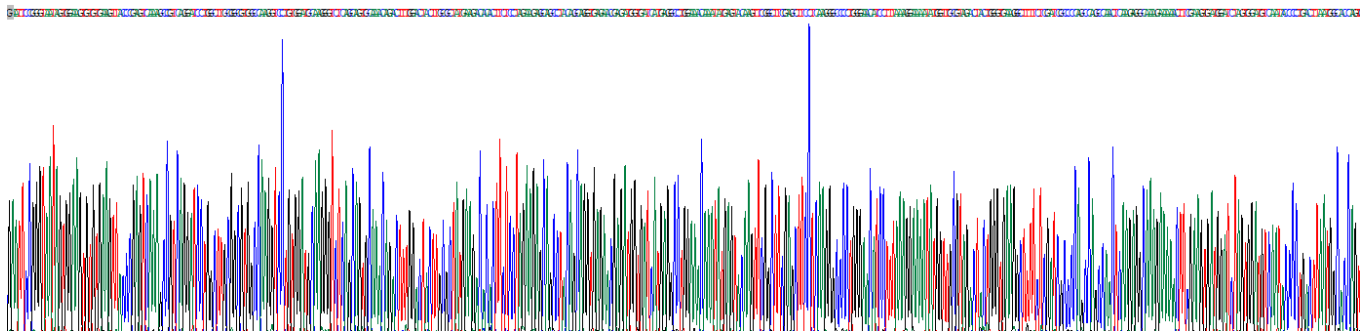
**[ SEQUENCE ]**

```

R VIVEVCEVTR VKAVRILACG
VAKVLWMQGS QQCKQTLDYL RYEDTLLLEE QPTAGENEMV IMRPGNKYEY
KFGFELPQGP LGTSFKGKYG CVDYWKAFK DRPSQPTQEA KKNFEVMDLV
DVNTPDLMAP VSAKKEKKVS CMFIPDGRVS VSARIDRKGK CEGDDISIHA
DFENTCSRIV VPKAAIVARH TYLANGQTKV FTQKLSSVRG NHIISGTCAS
WRGKSLRVQK IRPSILGONI LKVEYSLLIY VSVPGSKKVI LDLPLVIGSR
SGLSSRTSSM ASRTSSEMSW IDLNIPDTPE APPCYMDIIP EDHRLESPTT
PLDDVDDSQ DSPIFMYAPE FQFMPPTYT E

```

**[ IDENTIFICATION ]**



**Figure . Gene Sequencing (extract)**

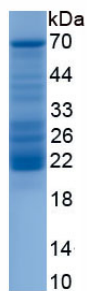


Figure. SDS-PAGE

**[ IMPORTANT NOTE ]**

The kit is designed for research use only, we will not be responsible for any issue if the kit was used in clinical diagnostic or any other procedures.