

**RPA709Mu01 50µg**

**Recombinant Toll Like Receptor 9 (TLR9)**

**Organism Species: *Mus musculus* (Mouse)**

***Instruction manual***

FOR RESEARCH USE ONLY

NOT FOR USE IN CLINICAL DIAGNOSTIC PROCEDURES

---

13th Edition (Revised in Aug, 2023)

**[ PROPERTIES ]**

**Source:** Prokaryotic expression

**Host:** *E.coli*

**Residues:** Leu26~Asn332

**Tags:** N-terminal His and GST Tag

**Subcellular Location:** Membrane

**Purity:** > 80%

**Traits:** Freeze-dried powder

**Buffer formulation:** PBS, pH7.4, containing 0.01% Sarcosyl, 5% Trehalose.

**Original Concentration:** 80µg/mL

**Applications:** Positive Control; Immunogen; SDS-PAGE; WB.

(May be suitable for use in other assays to be determined by the end user.)

**Predicted isoelectric point:** 8.1

**Predicted Molecular Mass:** 64.1kDa

**Accurate Molecular Mass:** 64kDa as determined by SDS-PAGE reducing conditions.

**[ USAGE ]**

Reconstitute in ddH<sub>2</sub>O to a concentration of 0.1-0.5 mg/mL. Do not vortex.

**[ STORAGE AND STABILITY ]**

**Storage:** Avoid repeated freeze/thaw cycles.

Store at 2-8°C for one month.

Aliquot and store at -80°C for 12 months.

**Stability Test:** The thermal stability is described by the loss rate. The loss rate was determined by accelerated thermal degradation test, that is, incubate the protein at 37°C for 48h, and no obvious degradation and precipitation were observed. The loss rate is less than 5% within the expiration date under appropriate storage condition.

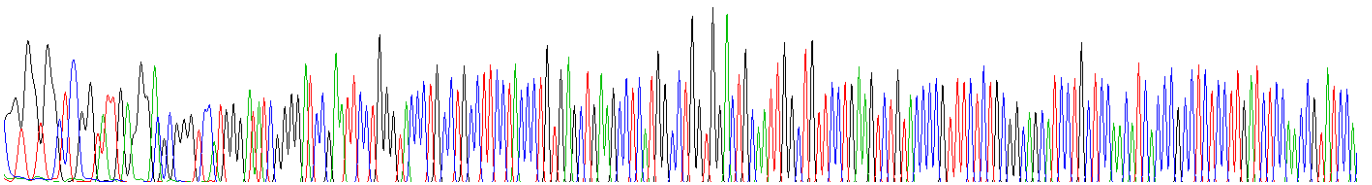
**[ SEQUENCE ]**

```

                                LGTLP AFLPCELKPH GLVDCNWLFL
KSVPRFSAAA SCSNITRLSL ISNRIHHLHN SDFVHLSNLR QLNLKWNCPP
TGLSPLHFSC HMTIEPRTFL AMRTLEELNL SYNGITTVPR LPSSLVNLSL
SHTNILVLDA NSLAGLYSLR VLFMDGNCY Y KNPCTGAVKV TPGALLGLSN
LTHLSLKYNN LTKVPRQLPP SLEYLLVSYN LIVKLGPEL ANLTSRVL
VGGNCRCDH APNPCIECGQ KSLHLHPETF HHLSHLEGLV LKDSSLHTLN
SSWFQGLVNL SVLDLSENF L YESITHTNAF QN
    
```

**[ IDENTIFICATION ]**

GGTGTGGTTCGGTATTGAGGGA GGGGTTCATGGGATTCGGGGATCCGAATTCCTGGGTACCTTCGCTGCTTCCCTTCCTTCCCTTCGAGCTGAAAGCTCAITGGCTGGTGGACTGCAATTGGCTGTTCCTGAACTCTGTACCGGTTTCTCTGCGGAGCATCTCTCGAAGATCAAGCGCTCTCTCTGATCTCGAAGCGTATCGA



**Figure . Gene Sequencing (extract)**



Figure. SDS-PAGE

**[ IMPORTANT NOTE ]**

The kit is designed for research use only, we will not be responsible for any issue if the kit was used in clinical diagnostic or any other procedures.