

RPH018Hu01 50µg

Recombinant Transketolase Like Protein 1 (TKTL1)

Organism Species: *Homo sapiens (Human)*

Instruction manual

FOR RESEARCH USE ONLY

NOT FOR USE IN CLINICAL DIAGNOSTIC PROCEDURES

13th Edition (Revised in Aug, 2023)

[**PROPERTIES**]

Source: Prokaryotic expression

Host: *E.coli*

Residues: Met1~Asp259

Tags: N-terminal His and GST Tag

Subcellular Location: Nucleus, Cytoplasm

Purity: > 80%

Traits: Freeze-dried powder

Buffer formulation: PBS, pH7.4, containing 0.01% Sarcosyl, 1mM DTT, 5% Trehalose and Proclin300.

Original Concentration: 50µg/mL

Applications: Positive Control; Immunogen; SDS-PAGE; WB.

(May be suitable for use in other assays to be determined by the end user.)

Predicted isoelectric point: 5.9

Predicted Molecular Mass: 58.9kDa

Accurate Molecular Mass: 59kDa as determined by SDS-PAGE reducing conditions.

[**USAGE**]

Reconstitute in ddH₂O to a concentration of 0.1-0.5 mg/mL. Do not vortex.

[**STORAGE AND STABILITY**]

Storage: Avoid repeated freeze/thaw cycles.

Store at 2-8°C for one month.

Aliquot and store at -80°C for 12 months.

Stability Test: The thermal stability is described by the loss rate. The loss rate was determined by accelerated thermal degradation test, that is, incubate the protein at 37°C for 48h, and no obvious degradation and precipitation were observed. The loss rate is less than 5% within the expiration date under appropriate storage condition.

[**SEQUENCE**]

MADAEARAEF PEEARPDRGT LQVLQDMASR LRIHSIRATC STSSGHPTSC
SSSSEIMSVL FFYIMRYKQS DPENPDNDRF VLAKRLSFVD VATGWLQGL
GVACGMAYTG KYFDRASYRV FCLMSDGESS EGSVWEAMAF ASYYSLDNLV
AIFDVNRLGH SGALPAEHCI NIYQRRCEAF GWNTYVVDGR DVEALCQVFW
QASQVKHKPT AVVAKTFKGR GTPSIEDAES WHAKPMPRER ADAIKLIES
QIQTSRNL

[IDENTIFICATION]

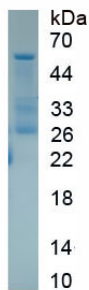


Figure. SDS-PAGE

[IMPORTANT NOTE]

The kit is designed for research use only, we will not be responsible for any issue if the kit was used in clinical diagnostic or any other procedures.