

**RPF800Hu01 100µg**

**Recombinant Transmembrane Protease, Serine 4 (TMPRSS4)**

**Organism Species: *Homo sapiens* (Human)**

***Instruction manual***

FOR RESEARCH USE ONLY

NOT FOR USE IN CLINICAL DIAGNOSTIC PROCEDURES

---

13th Edition (Revised in Aug, 2023)

**[ PROPERTIES ]**

**Source:** Prokaryotic expression

**Host:** *E.coli*

**Residues:** Lys54~Leu437

**Tags:** N-terminal His Tag

**Subcellular Location:** Membrane

**Purity:** > 80%

**Traits:** Freeze-dried powder

**Buffer formulation:** PBS, pH7.4, containing 0.01% Sarcosyl, 5% Trehalose.

**Original Concentration:** 100µg/mL

**Applications:** Positive Control; Immunogen; SDS-PAGE; WB.

(May be suitable for use in other assays to be determined by the end user.)

**Predicted isoelectric point:** 5.1

**Predicted Molecular Mass:** 46.1kDa

**Accurate Molecular Mass:** 46kDa as determined by SDS-PAGE reducing conditions.

**[ USAGE ]**

Reconstitute in ddH<sub>2</sub>O to a concentration of 0.1-0.5 mg/mL. Do not vortex.

**[ STORAGE AND STABILITY ]**

**Storage:** Avoid repeated freeze/thaw cycles.

Store at 2-8°C for one month.

Aliquot and store at -80°C for 12 months.

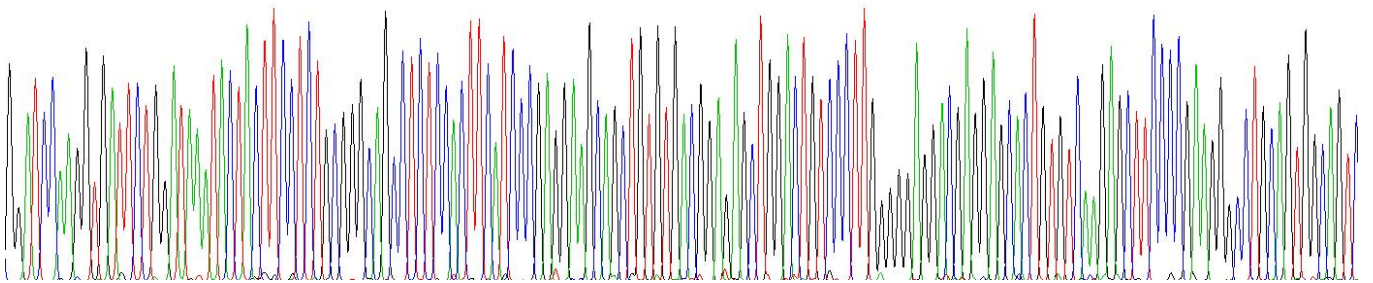
**Stability Test:** The thermal stability is described by the loss rate. The loss rate was determined by accelerated thermal degradation test, that is, incubate the protein at 37°C for 48h, and no obvious degradation and precipitation were observed. The loss rate is less than 5% within the expiration date under appropriate storage condition.

**[ SEQUENCE ]**

KVILDKY YFLCGQPLHF IPRKQLCDGE LDCPLGEDEE HCVKSFPEGP  
 AVAVRLSKDR STLQVLDSAT GNWFSACFDN FTEALAEAC RQMGYSSKPT  
 FRAVEIGPDQ DLDVVEITEN SQELMRNSS GPCLSGSLVS LHCLACGKSL  
 KTPRVVGVVEE ASVDSWPWQV SIQYDKQHVC GGSILDPHWV LTAAHCFRKH  
 TDVFNWKVRA GSDKLGSFPS LAVAKIIIE FNPMPKDND IALMKLQFPL  
 TFSGTVRPIC LPFFDEELTP ATPLWIIGWG FTKQNGGKMS DILLQASVQV  
 IDSTRCNADD AYQGEVTEKM MCAGIPEGGV DTCQGDSSGP LMYQSDQWHV  
 VGIVSWGYGC GGPSTPGVYT KVSAYLNWIY NVWKAEL

**[ IDENTIFICATION ]**

GGATCCAAAGGTGATTCTGGATAAATACTCTCCTCTGCGGGCAGCCTTCCACTTCAATCCCGAGGAAGCAAGCTGTGTGACGGAGAGCTGGACTGTCCCTTGGGGGAGGACGAGGAGCACTGTGTCAAGAGCTTCCCCGAAGGGCCTGCAGTGGCAGTC



**Figure . Gene Sequencing (extract)**

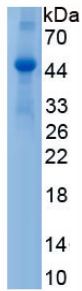


Figure. SDS-PAGE

**[ IMPORTANT NOTE ]**

The kit is designed for research use only, we will not be responsible for any issue if the kit was used in clinical diagnostic or any other procedures.