

**RPA145Mu01 50µg**

**Recombinant Vascular Endothelial Growth Factor C (VEGFC)**

**Organism Species: *Mus musculus* (Mouse)**

***Instruction manual***

**FOR RESEARCH USE ONLY**

**NOT FOR USE IN CLINICAL DIAGNOSTIC PROCEDURES**

---

13th Edition (Revised in Aug, 2023)

## **[ PROPERTIES ]**

**Source:** Prokaryotic expression

**Host:** *E.coli*

**Residues:** Ala108~Arg223

**Tags:** N-terminal His Tag

**Subcellular Location:** Secreted

**Purity:** > 80%

**Traits:** Freeze-dried powder

**Buffer formulation:** PBS, pH7.4, containing 0.01% Sarcosyl, 5% Trehalose.

**Original Concentration:** 700µg/mL

**Applications:** Positive Control; Immunogen; SDS-PAGE; WB.

(May be suitable for use in other assays to be determined by the end user.)

**Predicted isoelectric point:** 8.6

**Predicted Molecular Mass:** 14.3kDa

**Accurate Molecular Mass:** 15kDa as determined by SDS-PAGE reducing conditions.

## **[ USAGE ]**

Reconstitute in 10mM PBS (pH7.4) to a concentration of 0.1-1.0 mg/mL. Do not vortex.

## **[ STORAGE AND STABILITY ]**

**Storage:** Avoid repeated freeze/thaw cycles.

Store at 2-8°C for one month.

Aliquot and store at -80°C for 12 months.

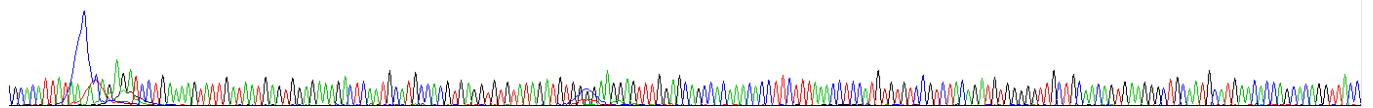
**Stability Test:** The thermal stability is described by the loss rate. The loss rate was determined by accelerated thermal degradation test, that is, incubate the protein at 37°C for 48h, and no obvious degradation and precipitation were observed. The loss rate is less than 5% within the expiration date under appropriate storage condition.

## **[ SEQUENCE ]**

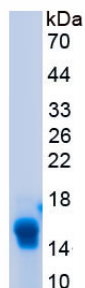
AHY NTEILKSIDN EWRKTQCMR EVCIDVGKEF GAATNTFFKP  
PCVSVYRCGG CCNSEGLQCM NTSTGYLSKT LFEITVPLSQ GPKPVTISFA  
NHTSCRCMSK LDVYRQVHSI IRR

## [ IDENTIFICATION ]

ATGATTTATACACAGATCTGAAAGTATTGATAGTGGAGAGAGCTCATTGCATCCAGTGAAGTGTATAGATGAGGGAGAGGTTTGGACAGCCACAAACACTTCTTAAACCTCCATGTGTGTGCTTACAGATGTGGGGGTTCGTCACAGTGAAGGGCTGCATGCATGAACCCAGCAGGTTACC  
A H Y N T E I L K S I D N E W R K T Q C M P R E V C I D V G K E F G A A T N T F F K P P C V S V Y R C G G C C N S E G L Q C M N T S T G Y L



**Figure. Gene Sequencing (Extract)**



**Figure. SDS-PAGE**

## [ IMPORTANT NOTE ]

The kit is designed for research use only, we will not be responsible for any issue if the kit was used in clinical diagnostic or any other procedures.